

Pelvic Support Problems



Cystocele



Vaginal vault prolapse with enterocele.



Combination of pelvic support problems.

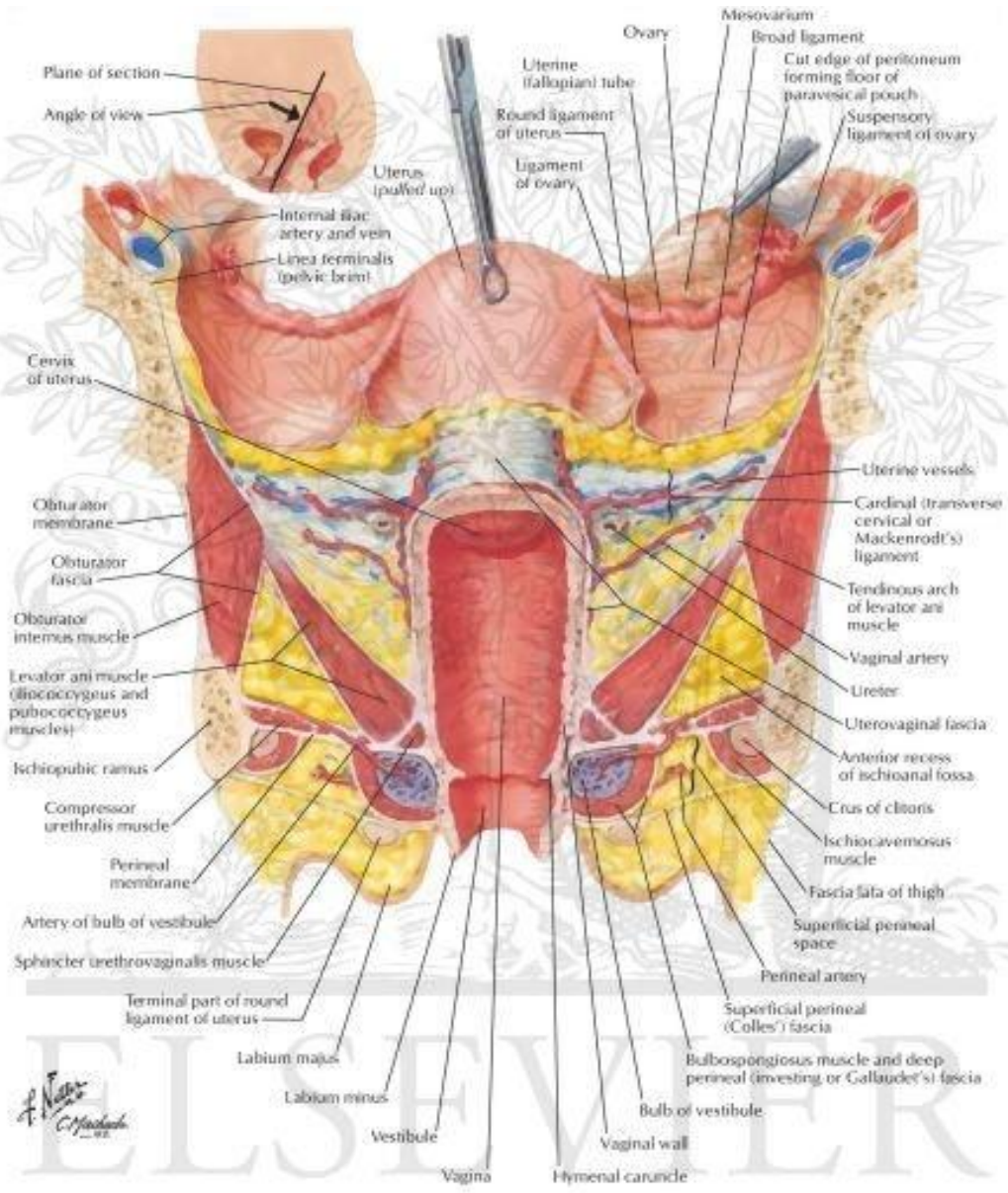


Rectocele

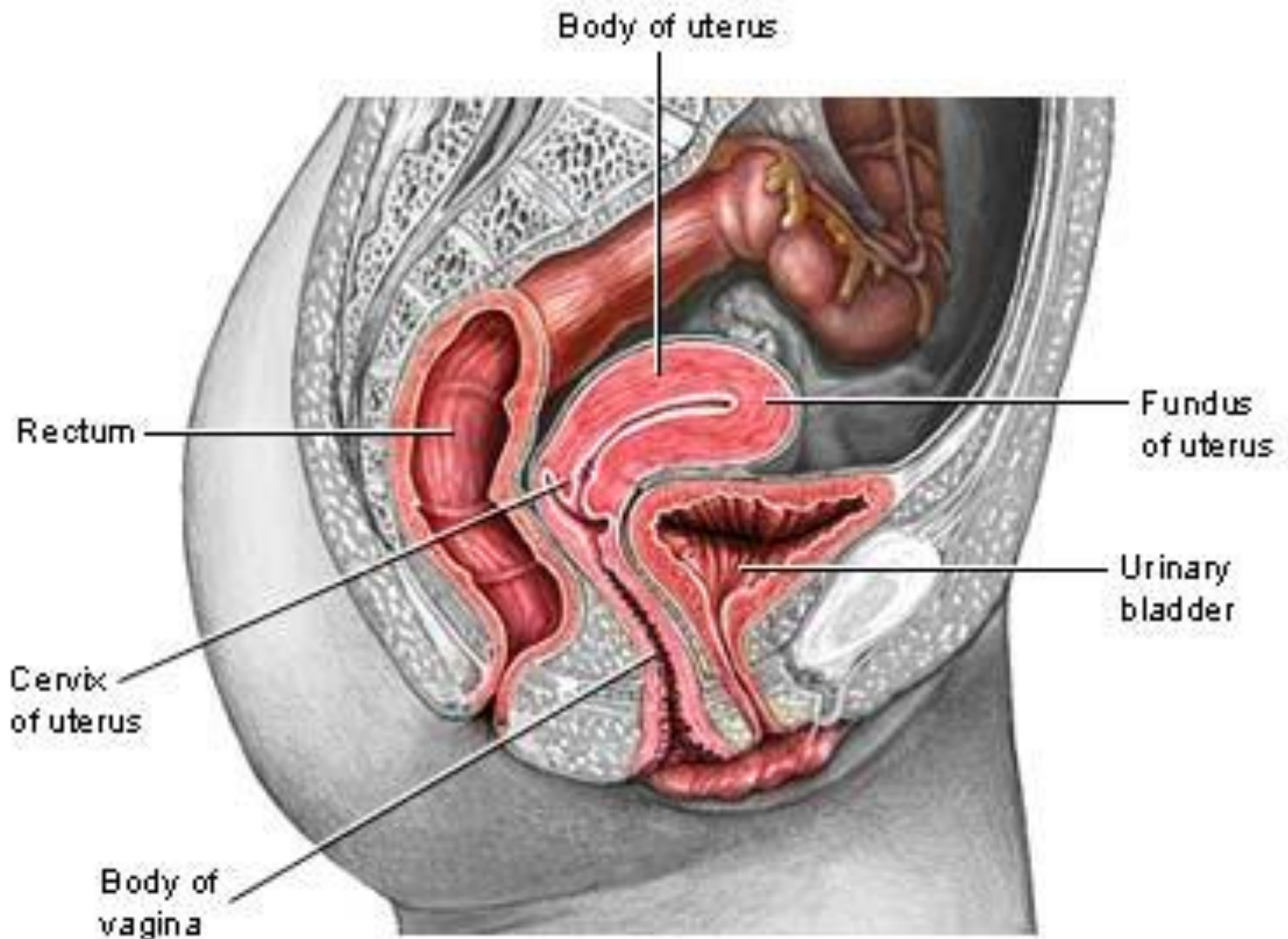


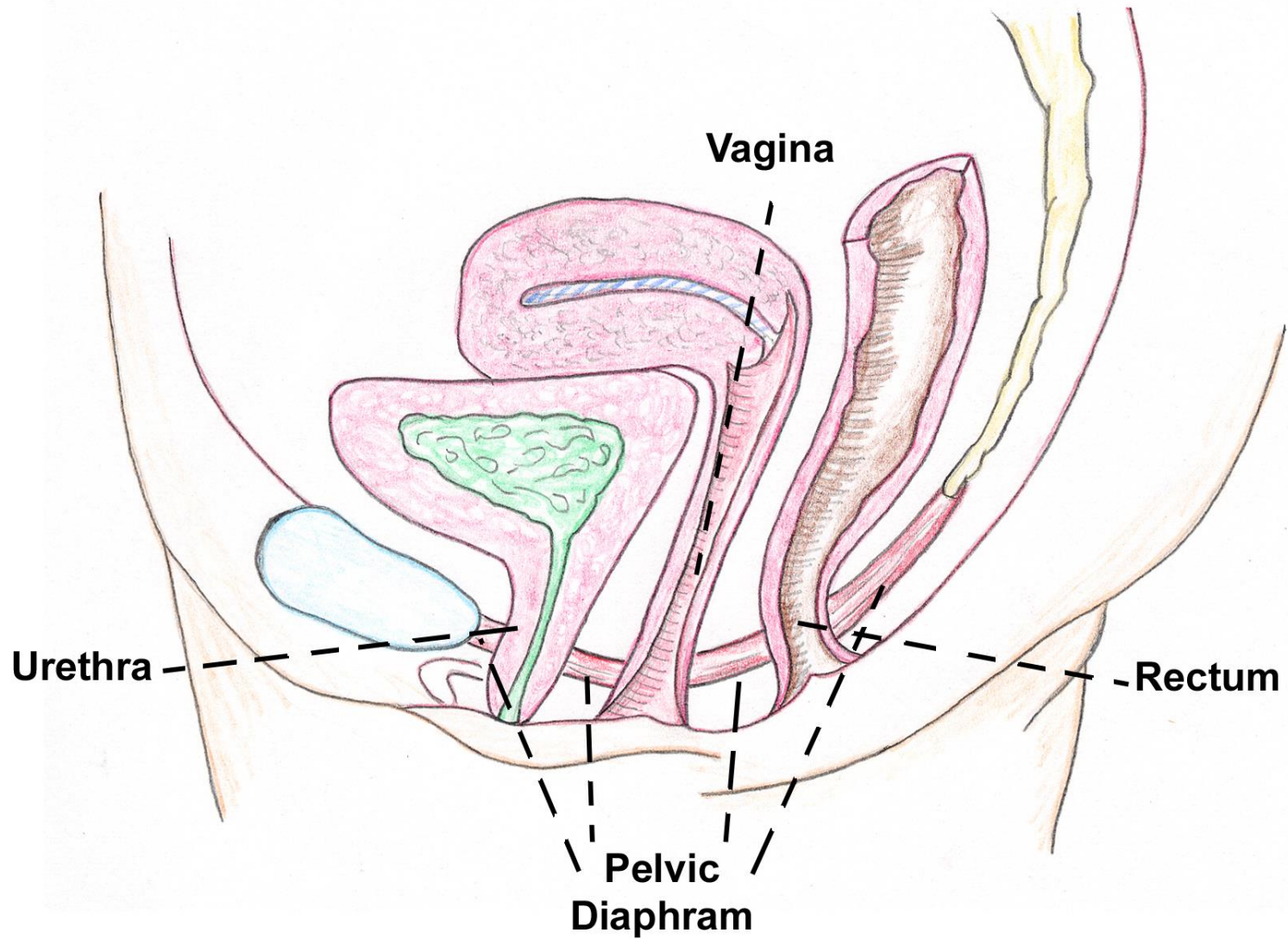
Uterine prolapse.

SUPPORTS OF UTERUS



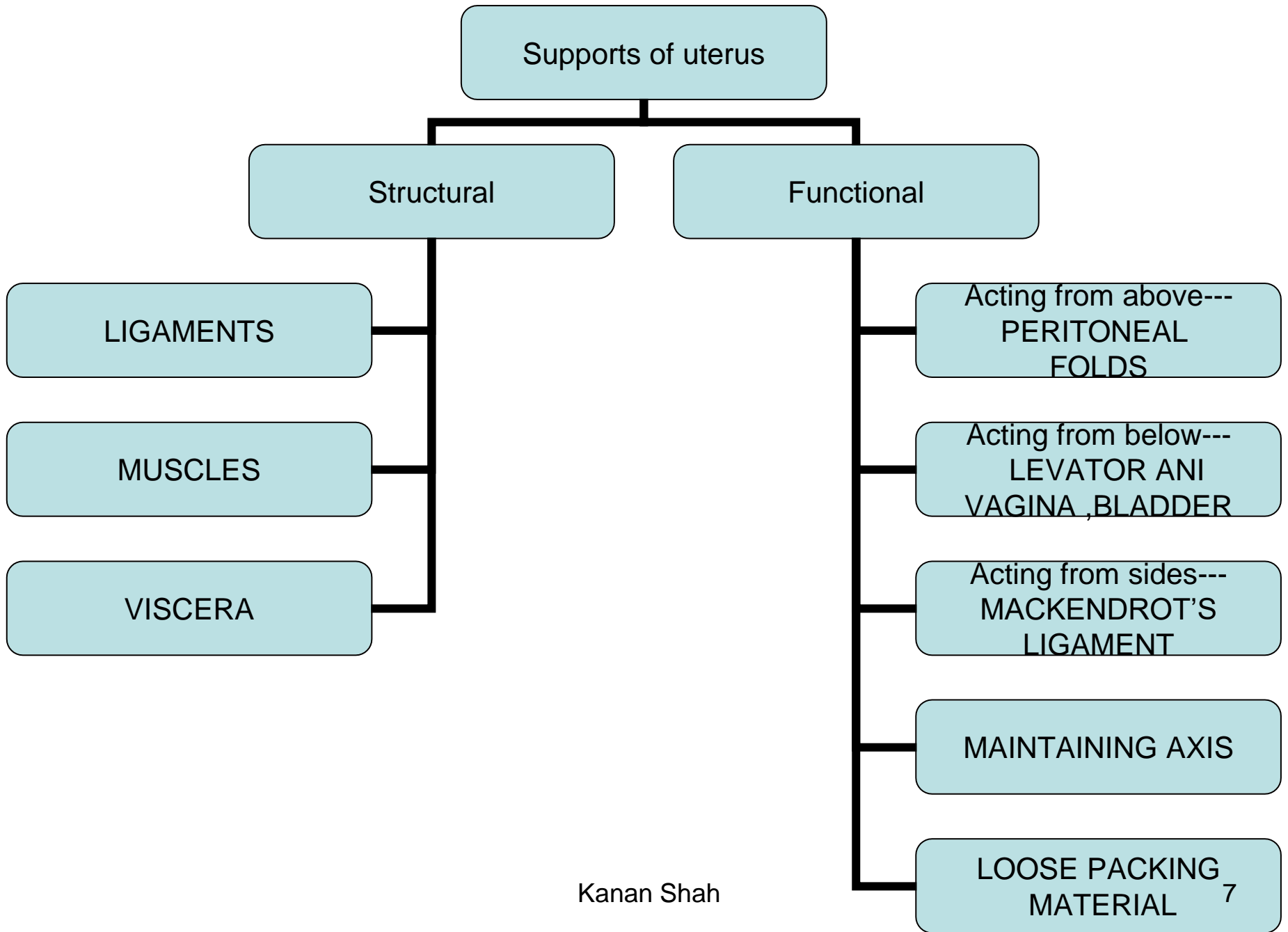
© Elsevier, Inc. - Netterimages.com

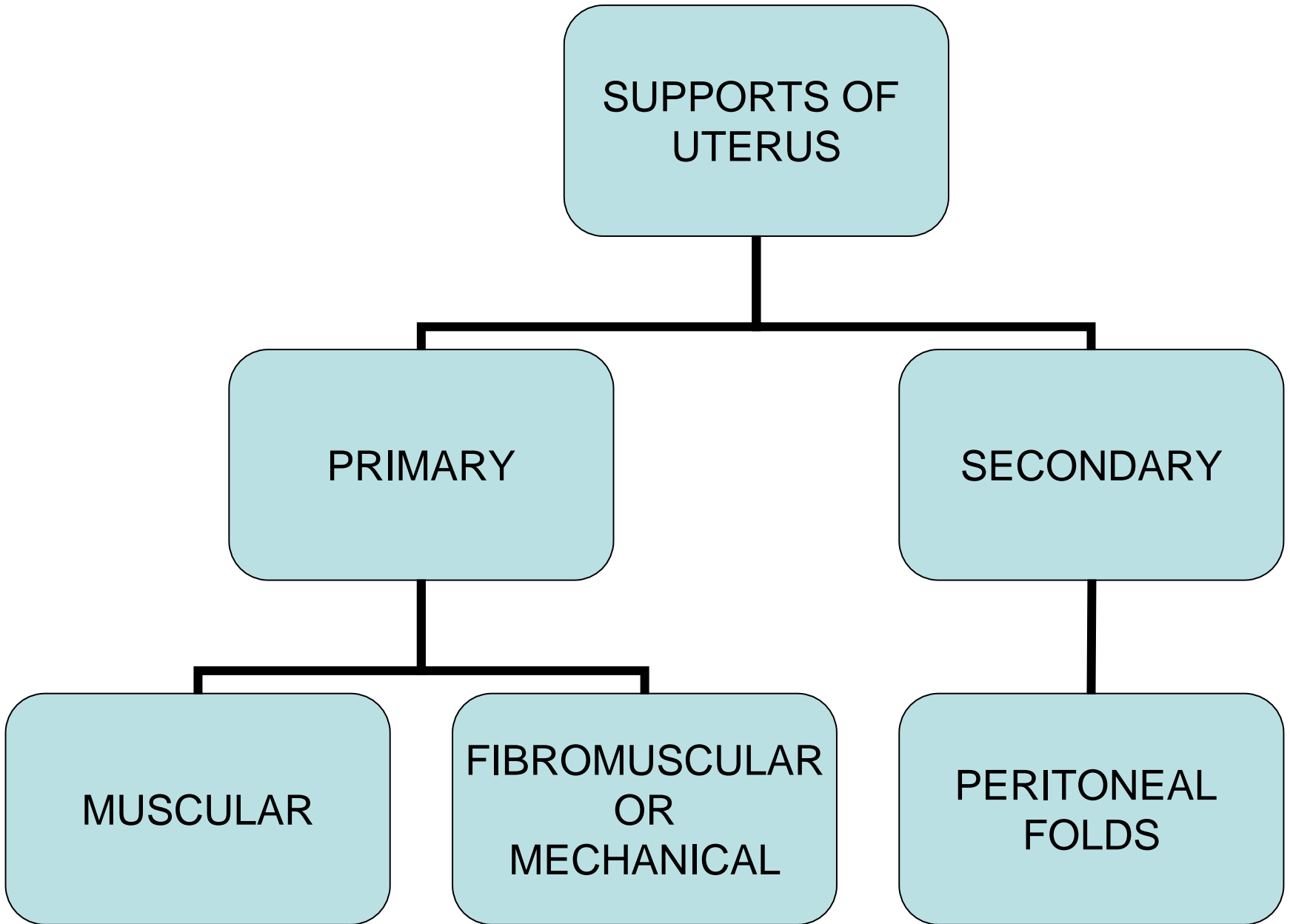




Kanan Shah







LIGAMENTS OF UTERUS

TRUE FIBROMUSCULAR BANDS

ROUND LIGAMENT

MACKENDROT'S LIGAMENT

UTEROSACRAL LIGAMENT

PUBOCERVICAL LIGAMENT

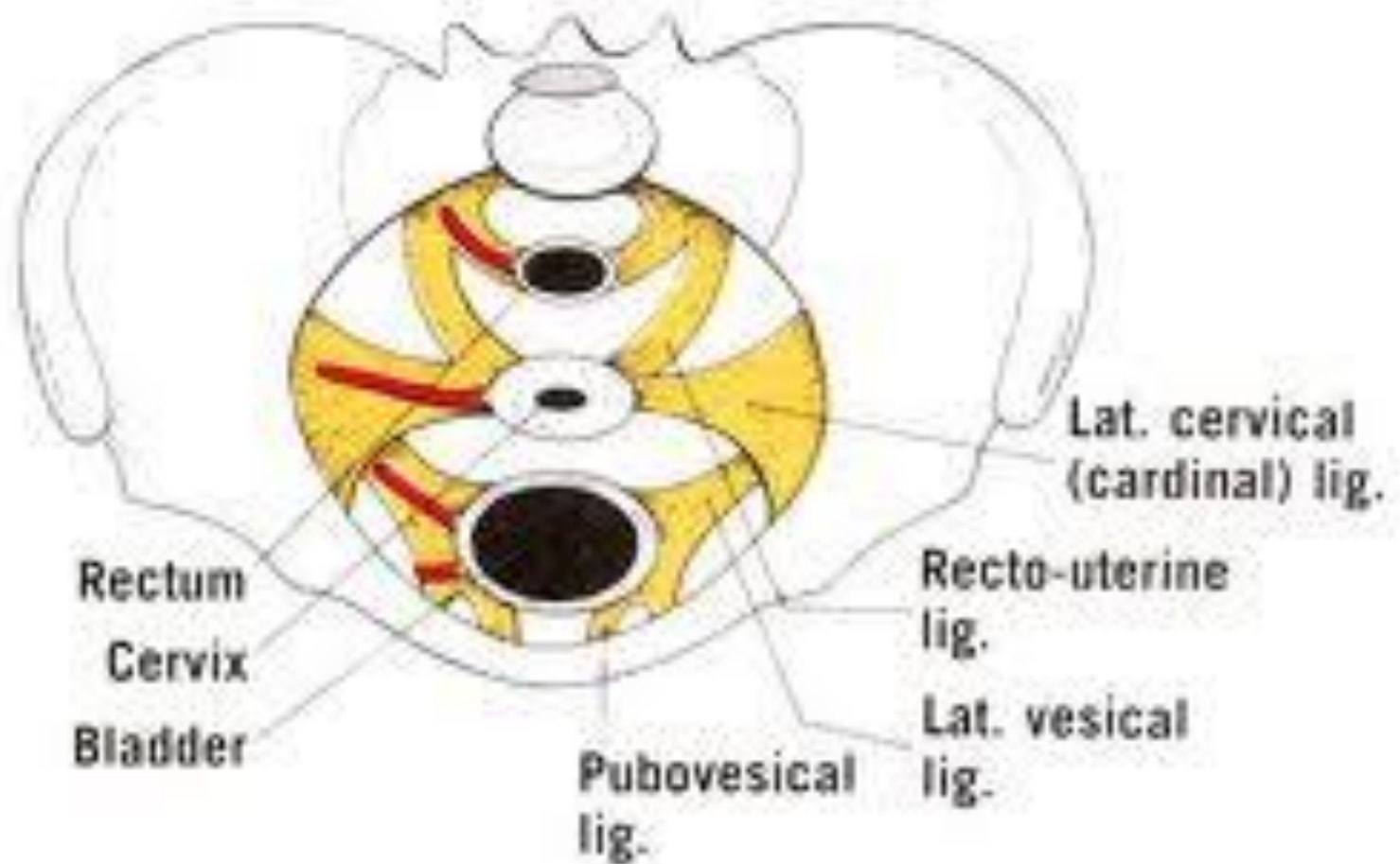
FALSE PERITONEAL FOLDS

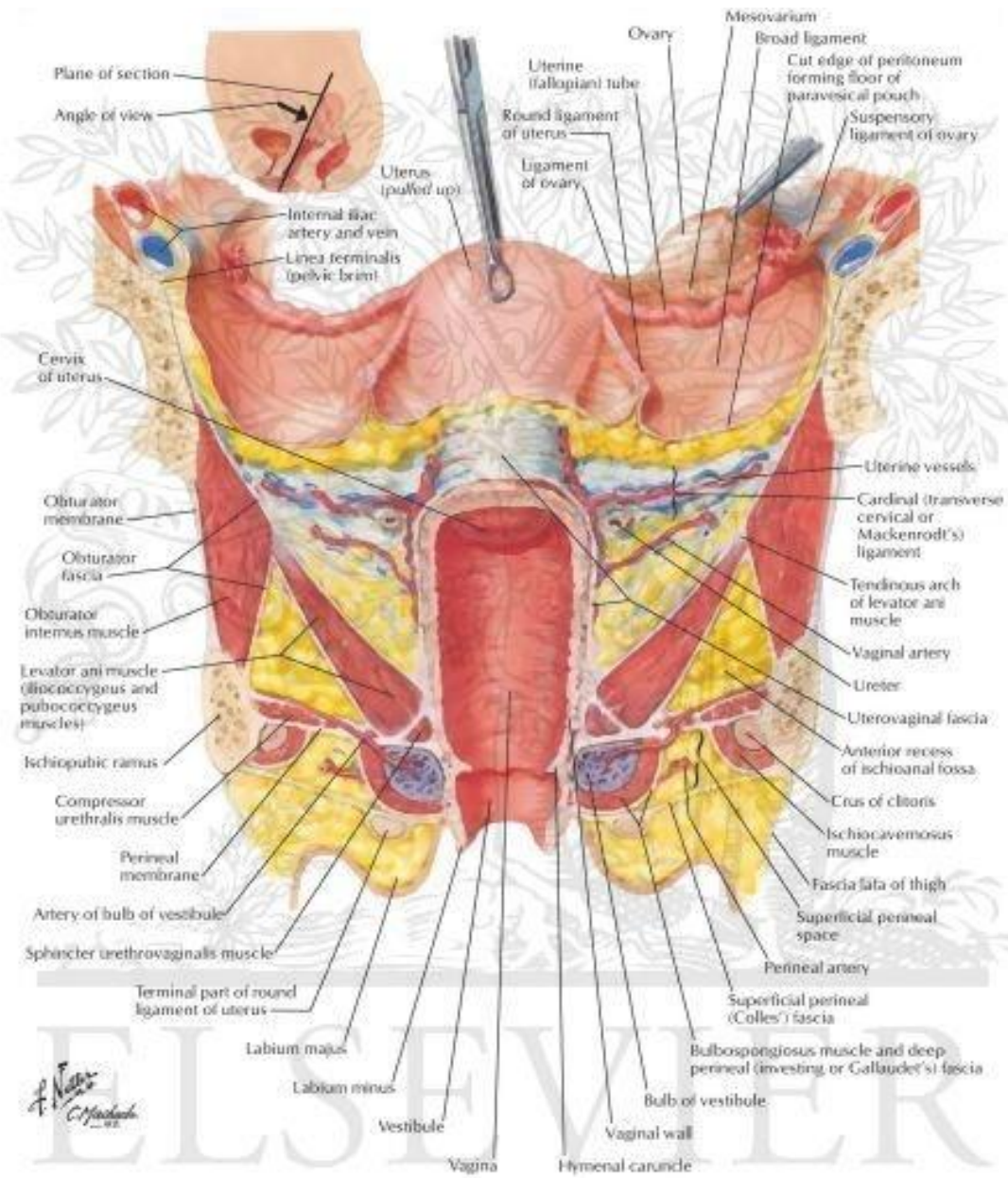
UTEROVESICAL LIGAMENT

RECTOVAGINAL LIGAMENT

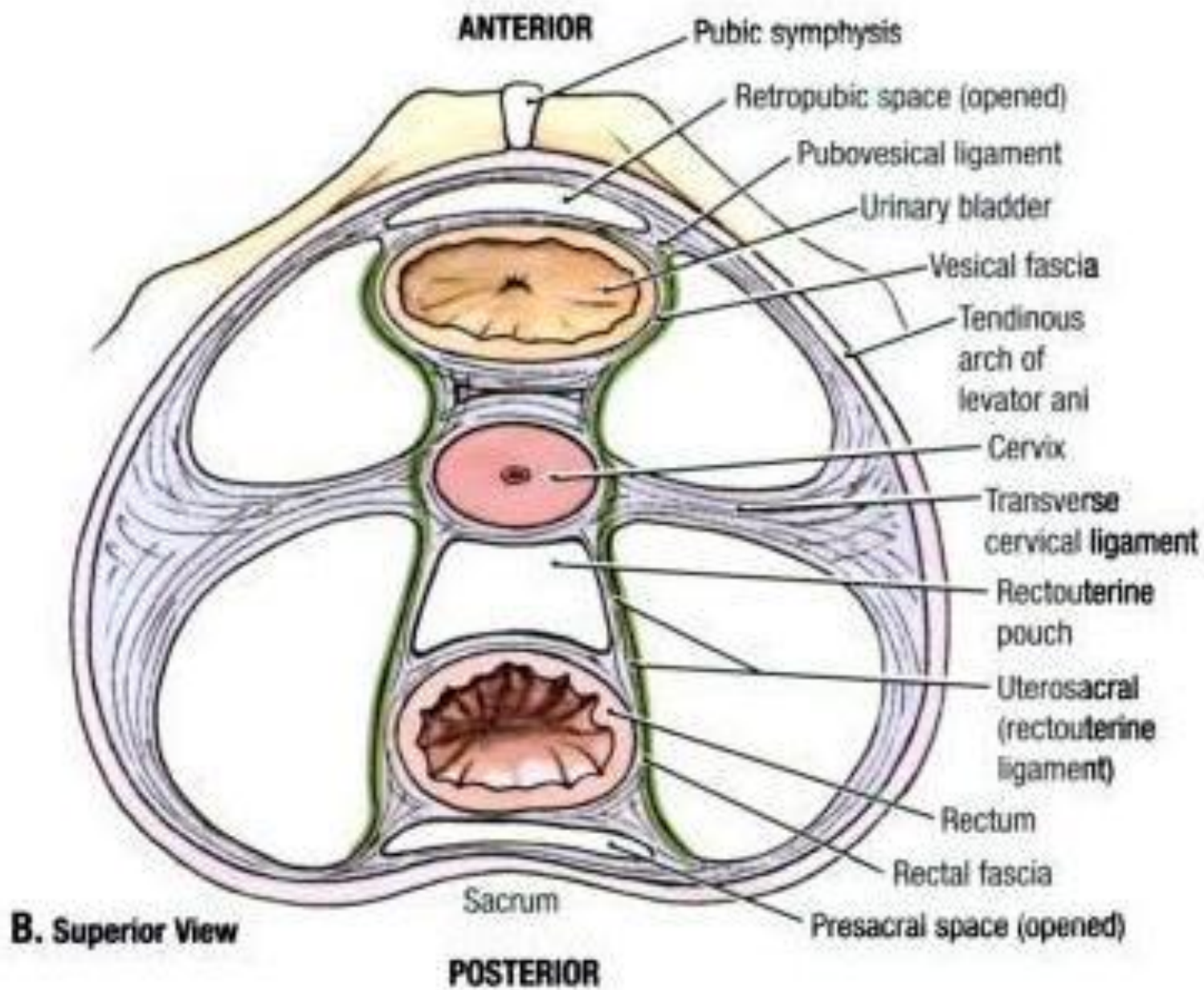
RECTOUTERINE FOLDS

BROAD LIGAMENT





F. Netter
 M.D.
 C. M. Anderson
 M.D.



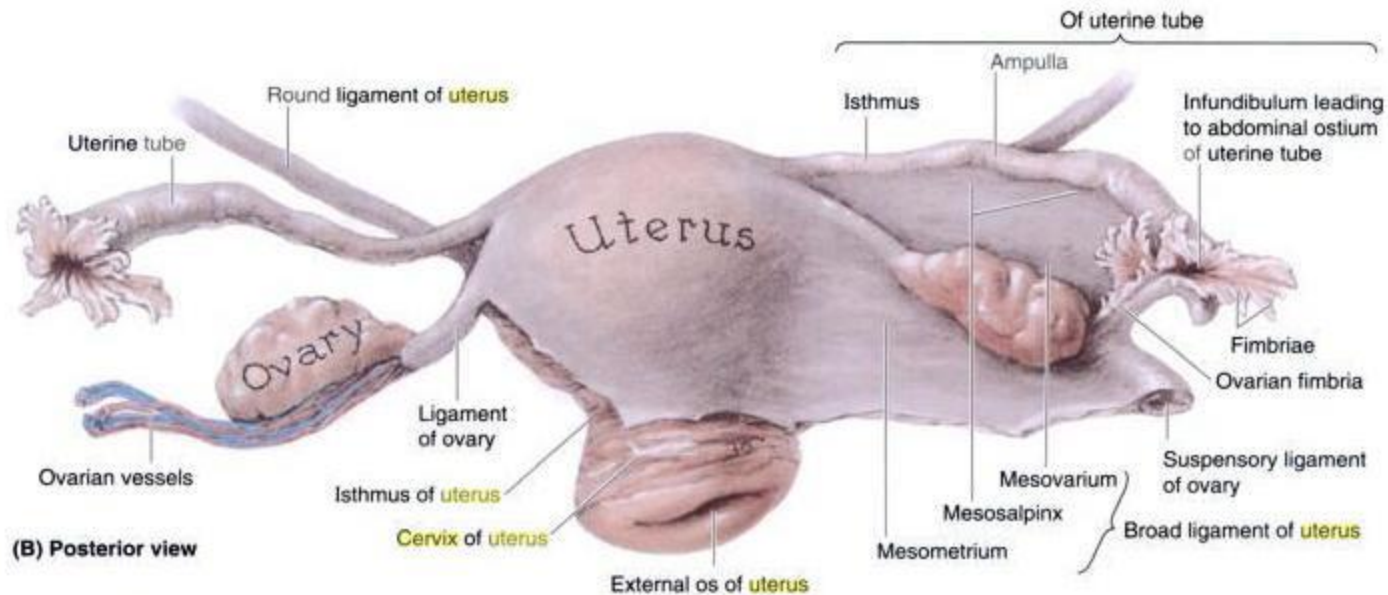
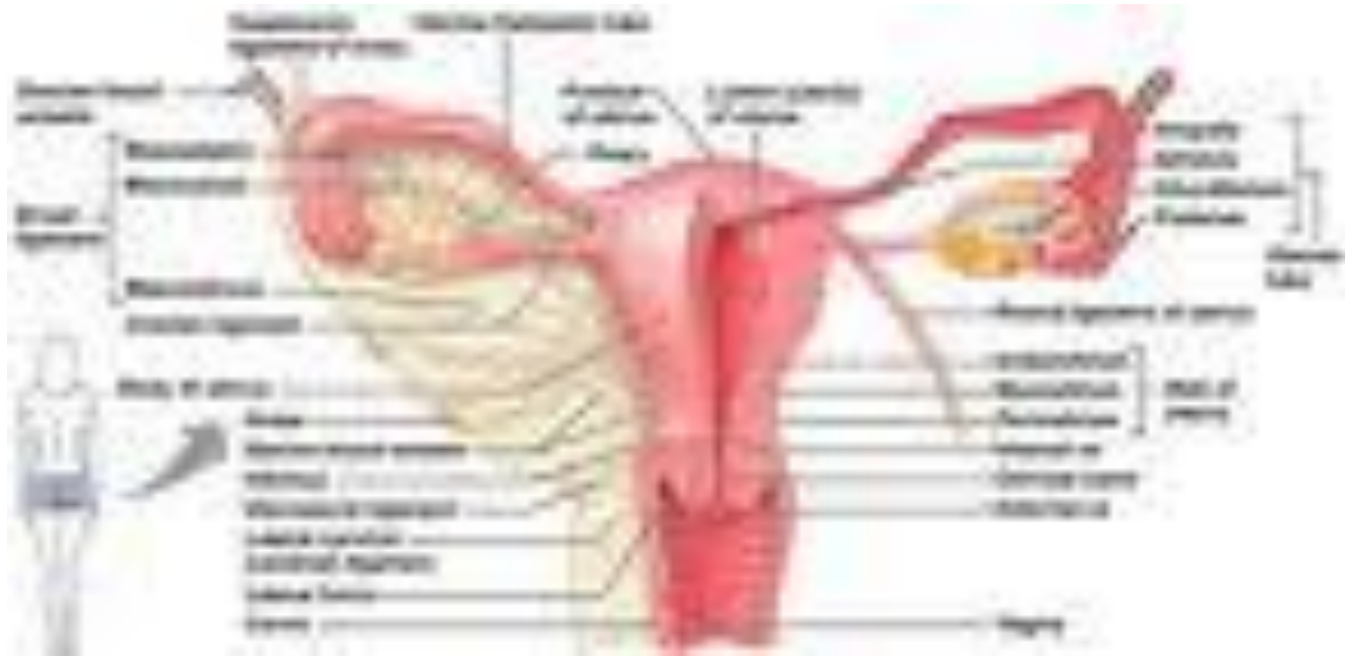
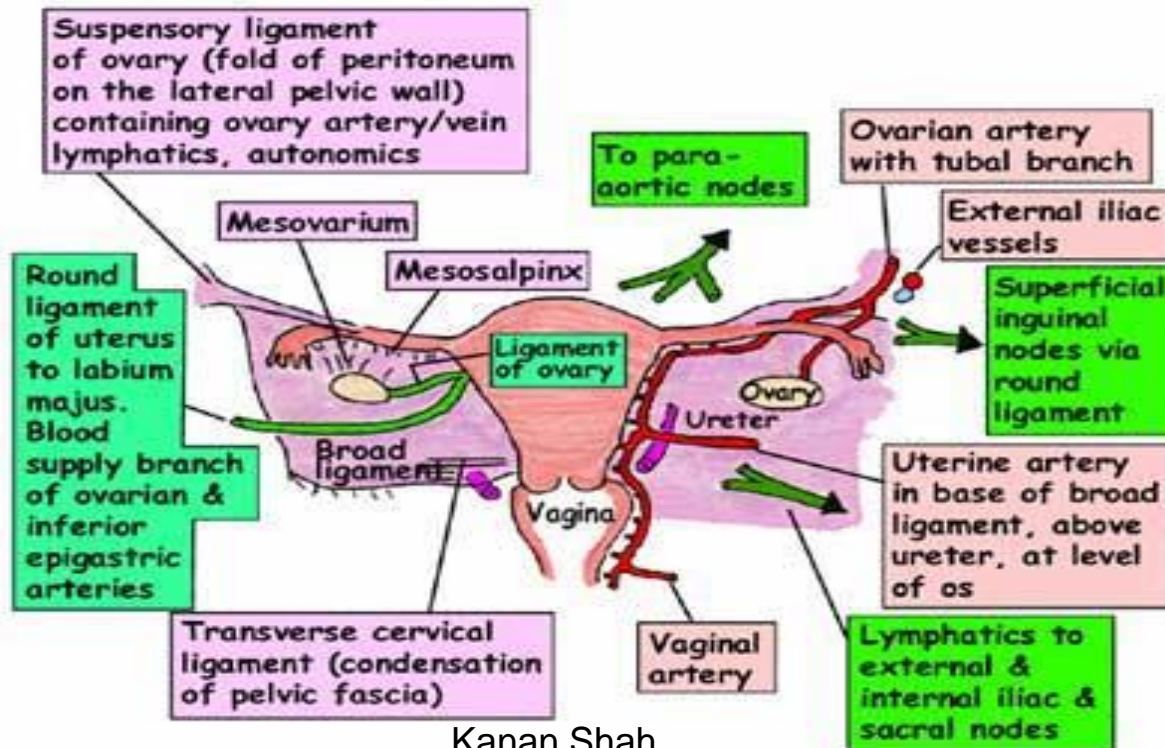


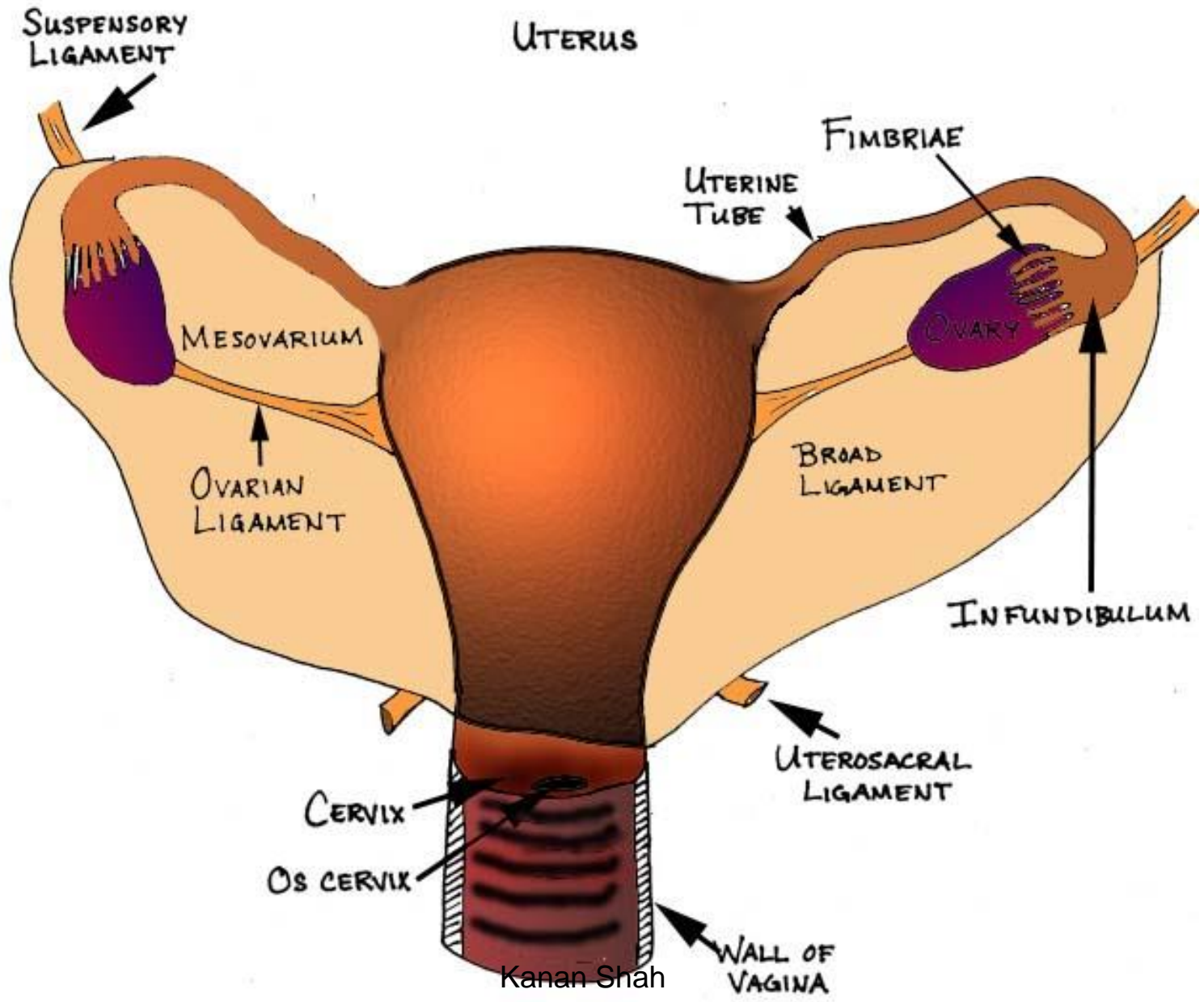
Figure 3.31. Female pelvic viscera. A. In this dissection of the female genital organs, the bladder and adjacent anterior pelvis (superior ramus and bodies of pubic bones) have been coronally sectioned and the anterior segment has been removed. On the right side, the uterine tube, ovary, broad ligament, and peritoneum covering the lateral wall of the pelvis have been removed to display the ureter and branches of the internal iliac artery. **B.** This dissection reveals the uterus, ovaries, uterine tubes, and related structures. The broad ligament is removed on the right side.



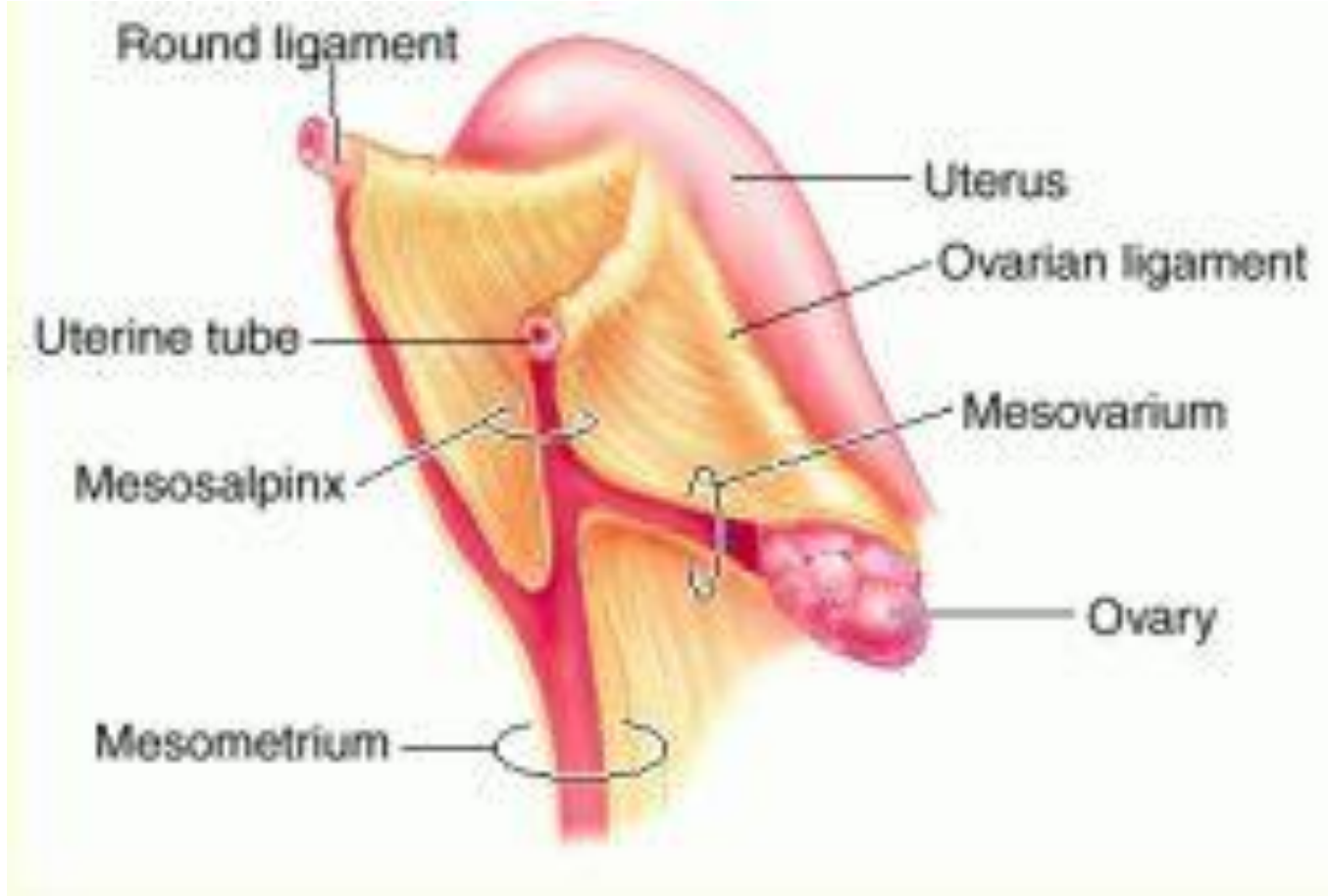
UTERUS - BROAD LIGAMENT

- Double layer of peritoneum draped over uterus and tubes
- Distal ends of tubes stick out of posterior layer of it and lie free
- Between two layers are arteries and veins, round ligament, ligament of ovary, lymphatics. The ovary is partially covered by a separate posterior fold of the broad ligament (mesovarium) but the surface of the ovary is devoid of peritoneum to allow exit of the ova.
- The tubes lie in the upper edge of the broad ligament which is termed the mesosalpinx
- The ureters pass through the base of the broad ligament in close relationship to the uterine artery

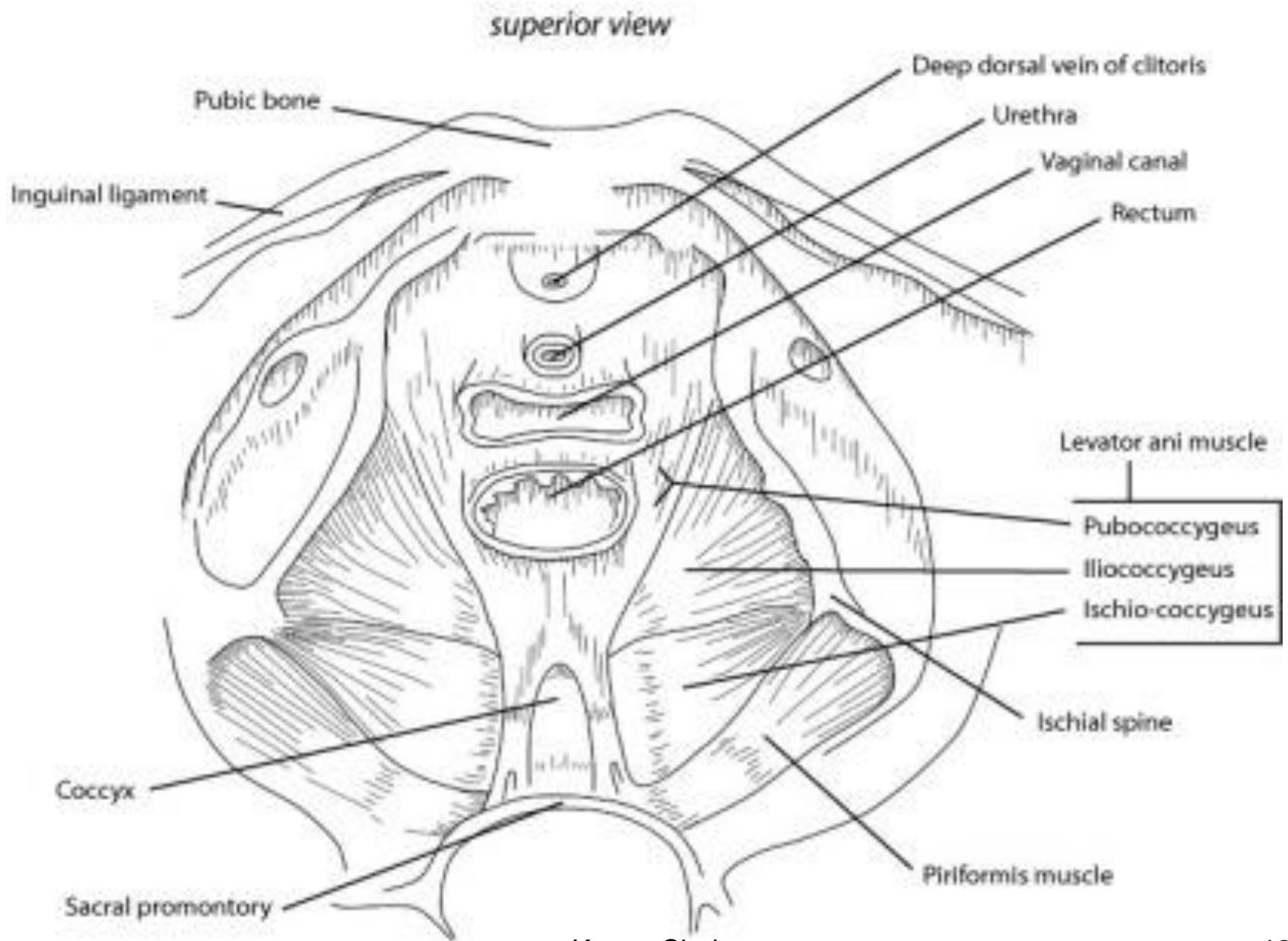




Kanan Shah

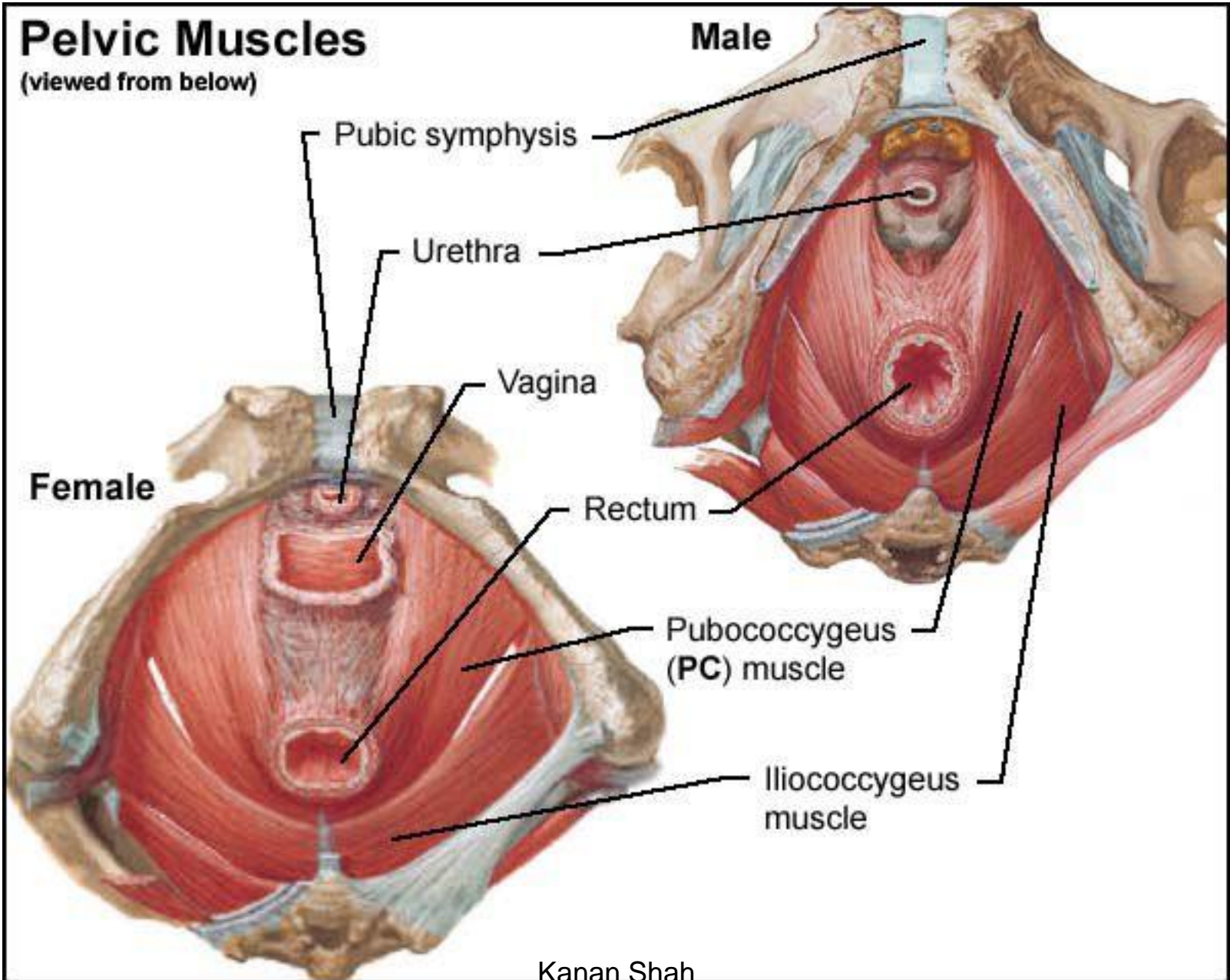


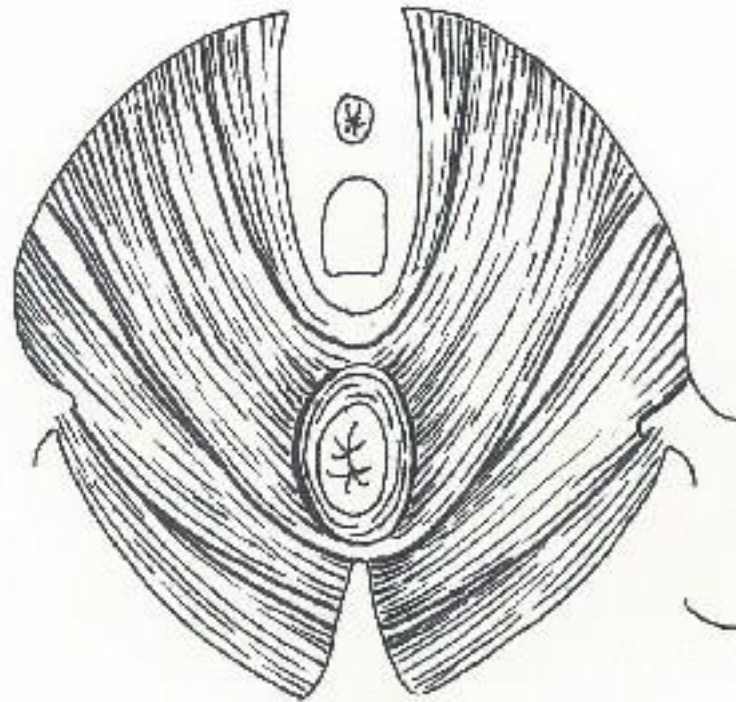
Muscles of the Pelvic Floor

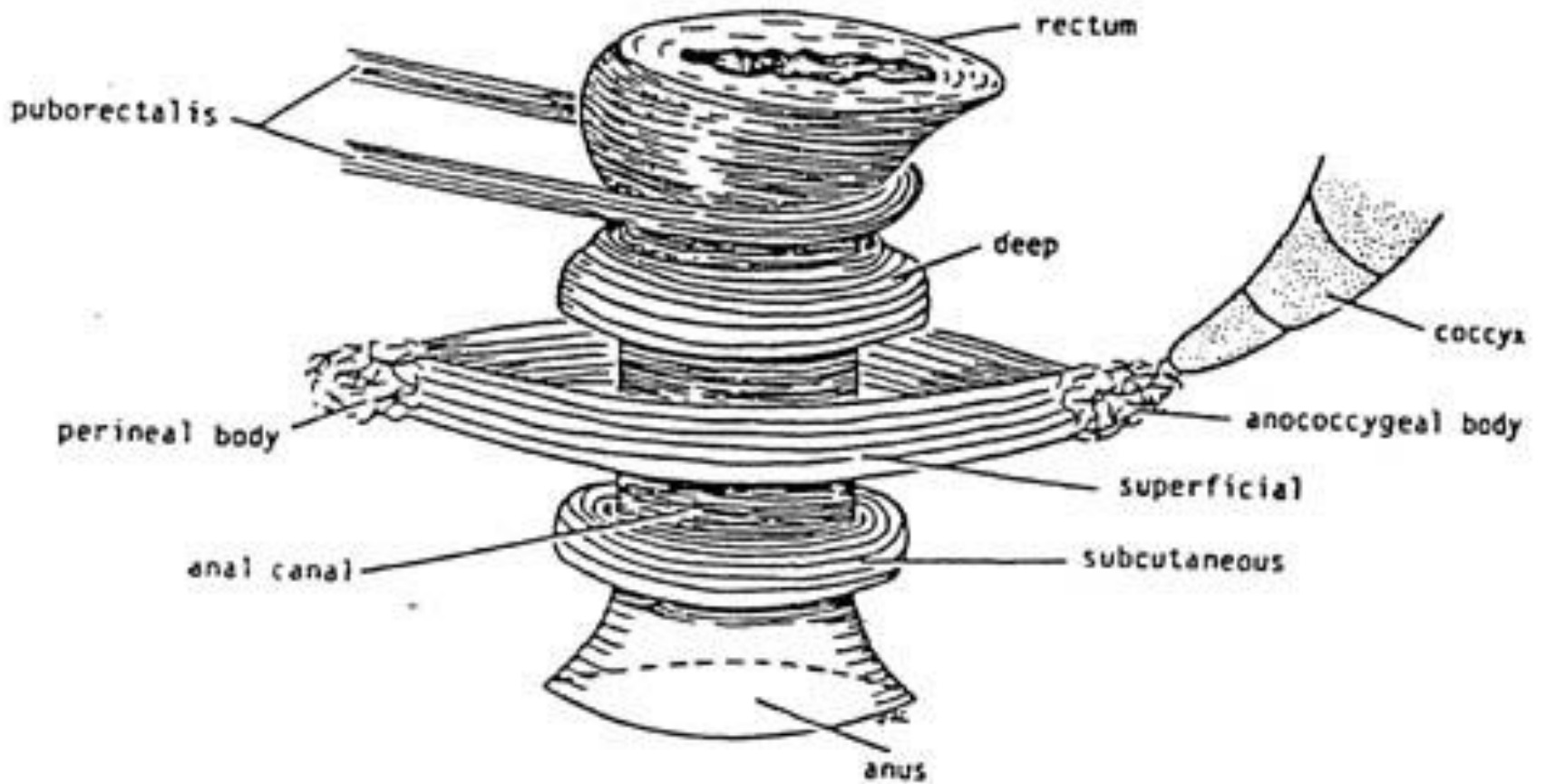


Pelvic Muscles

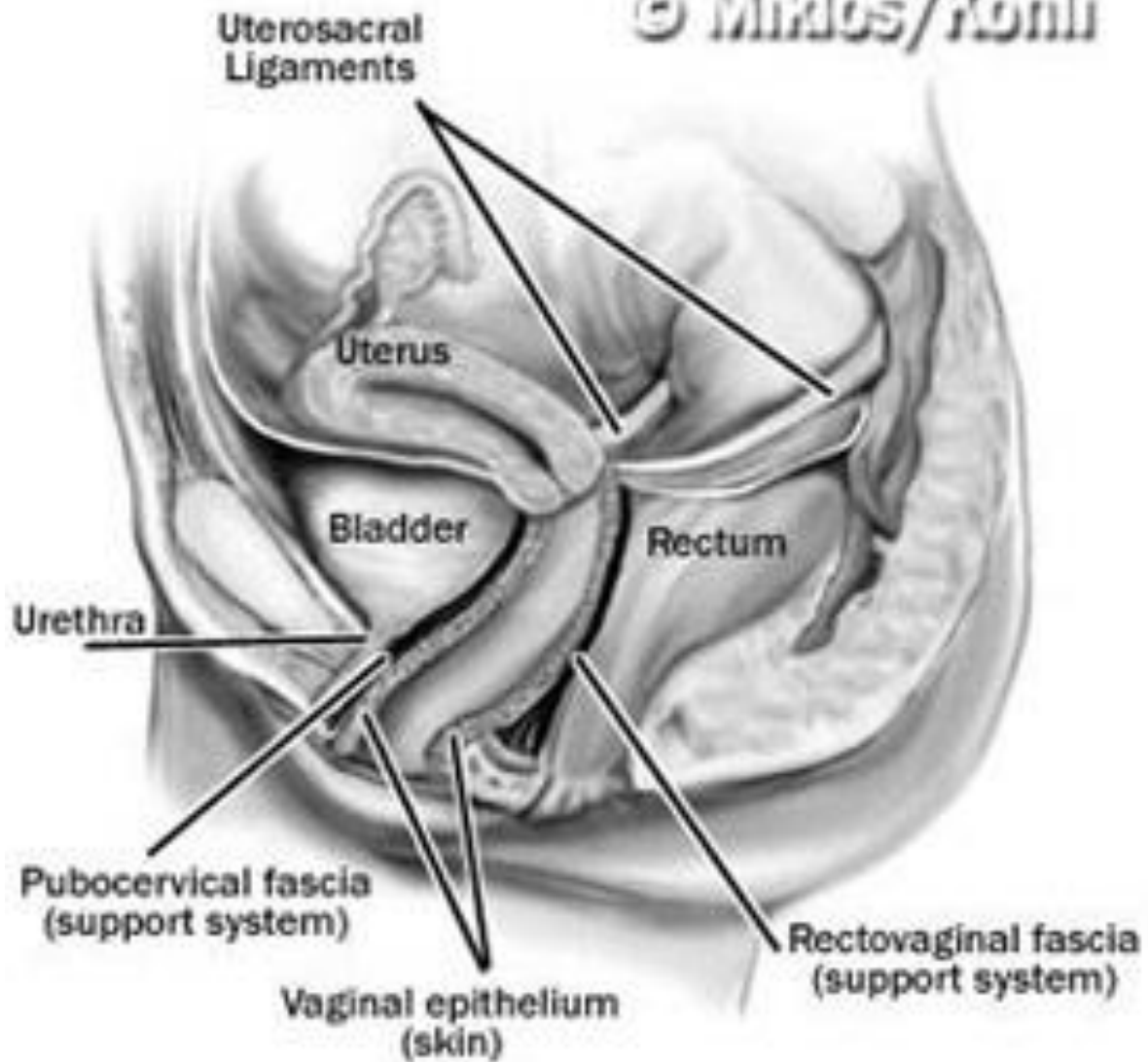
(viewed from below)







© Miklos/Konli



Aknowledgements

- Human Anatomy by BD Chaurasia
- Gray's Anatomy
- Essentials of Human Antomy: Thorax and Abdomen by Asimkumar Dutta