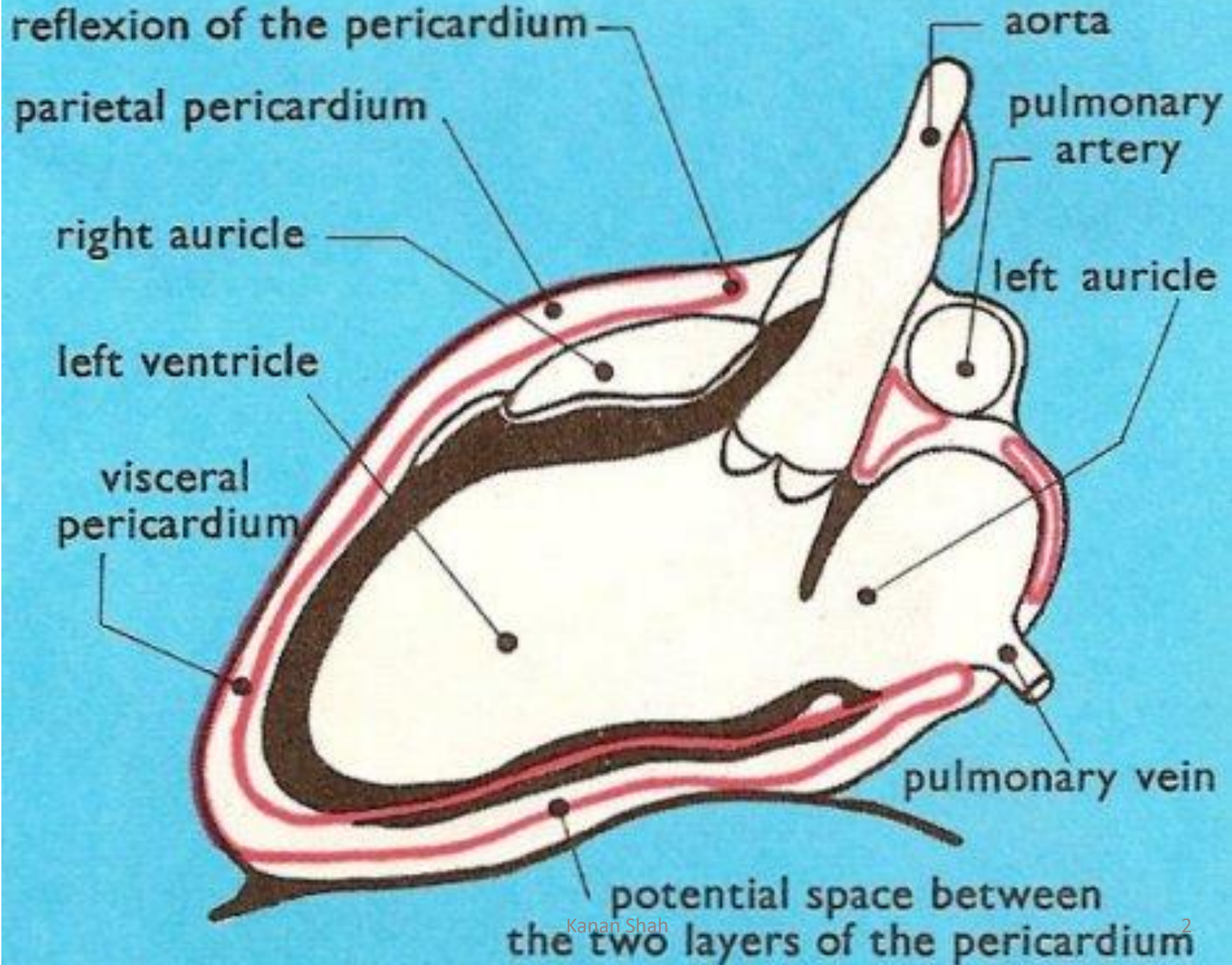


# PERICARDIUM

## SEROUS MEMBRANE

Envelopes heart forms closed conical  
fibro-serous sac.

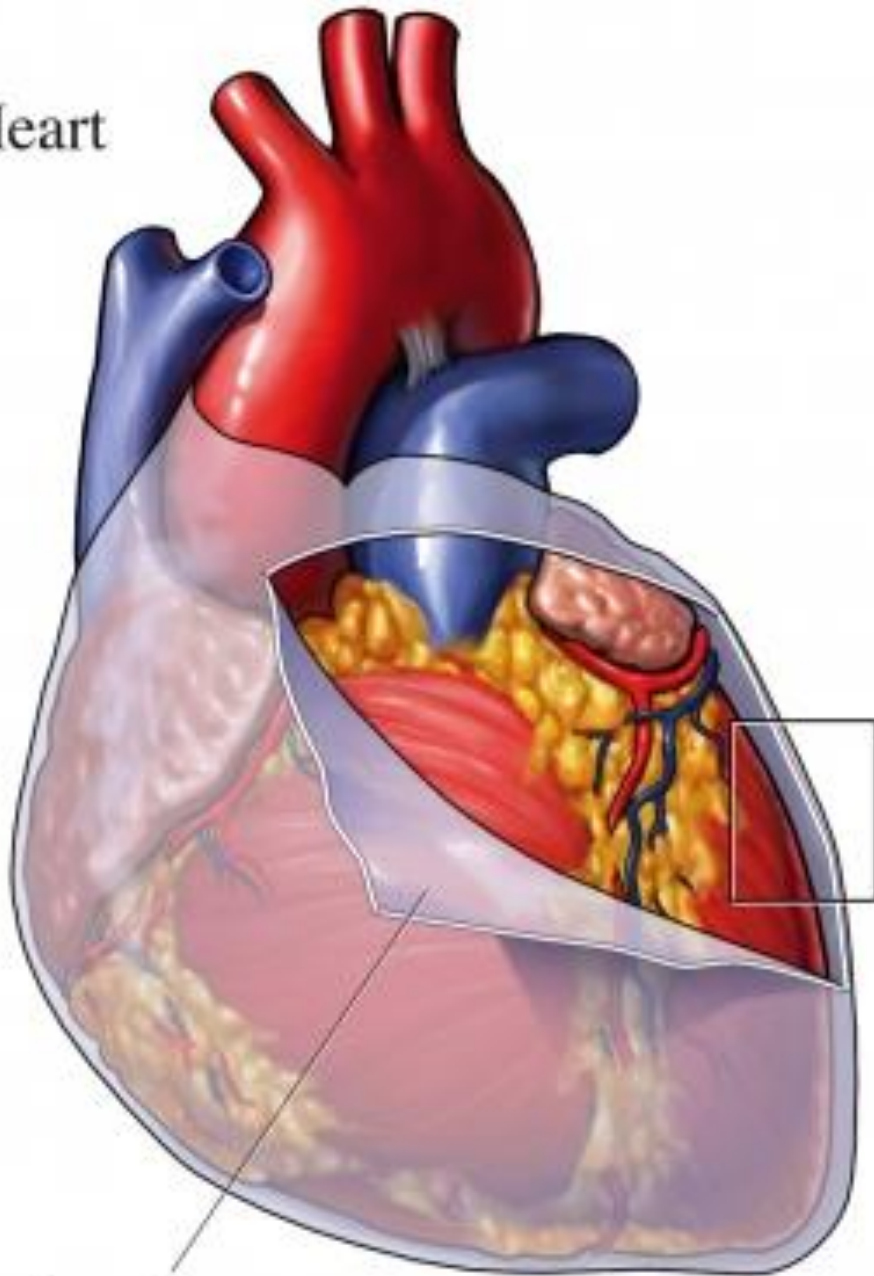


- Two sacs of pericardium

- outer----single layered fibrous pericardium
- Inner----double layered serous pericardium

So, Heart is intrafibrous but extraserous.

Heart

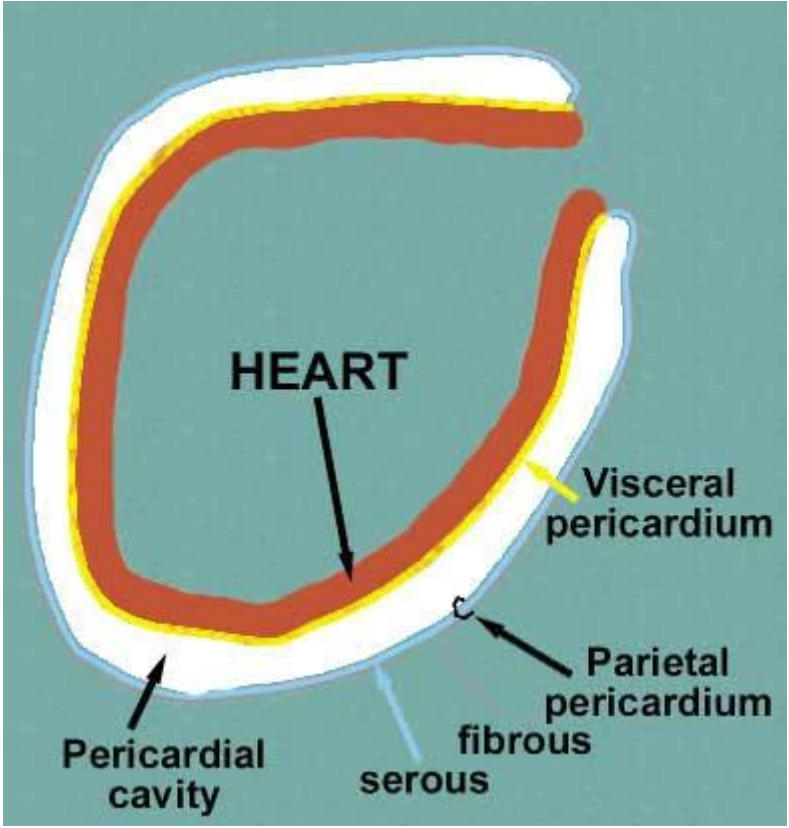


Pericardium

Pericardium



Pericardial fluid



# FIBROUS PERICARDIUM

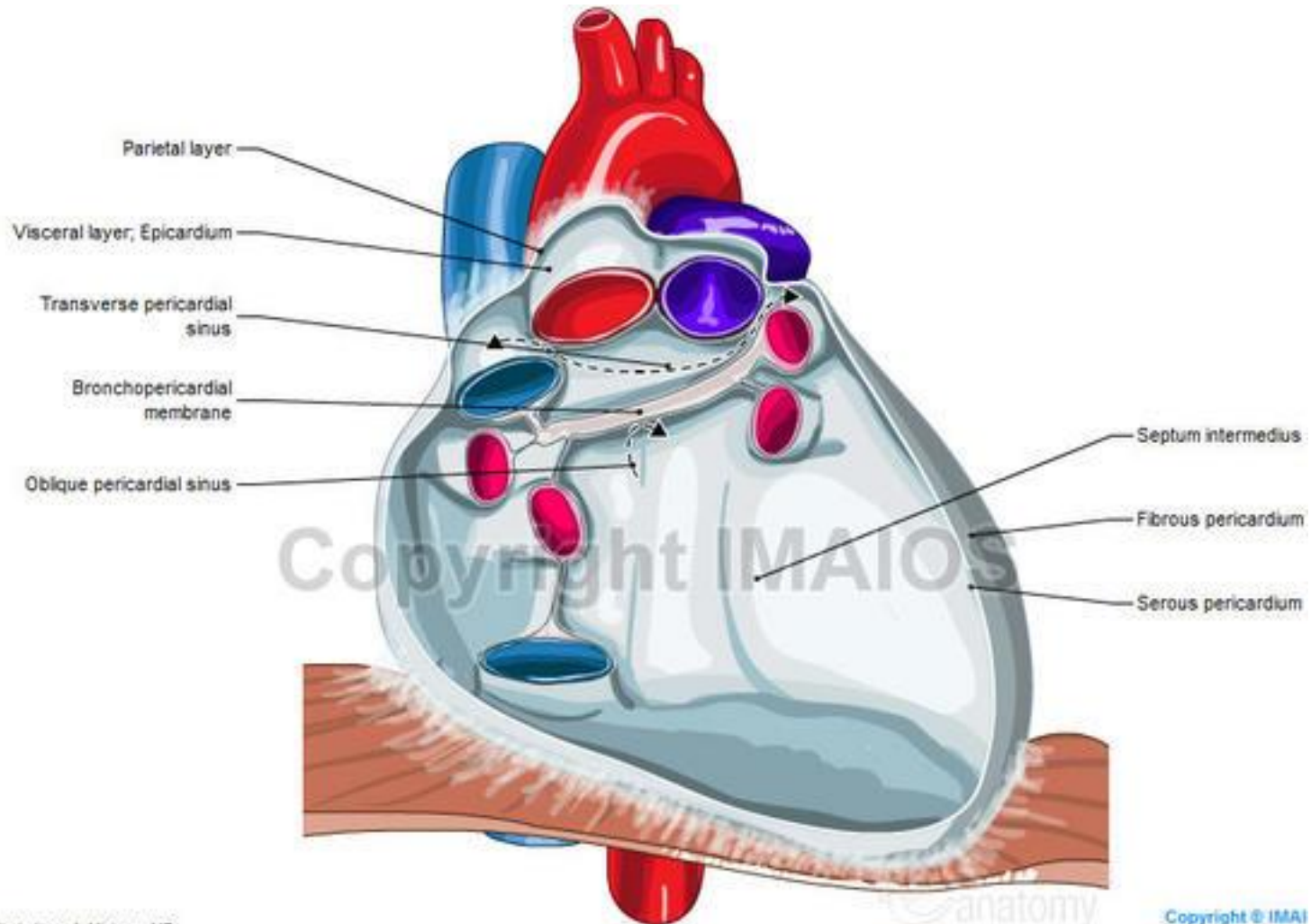
- Truncated cone shaped
- Open sac
- Keeps the heart in position and prevents overdilatation
- Attachments-
- Structures piercing—IVC,SVC,Asc.Aorta, Rt.and Lt.pulmonary arteries, four pulmonary veins
- Relations-

# SEROUS PERICARDIUM

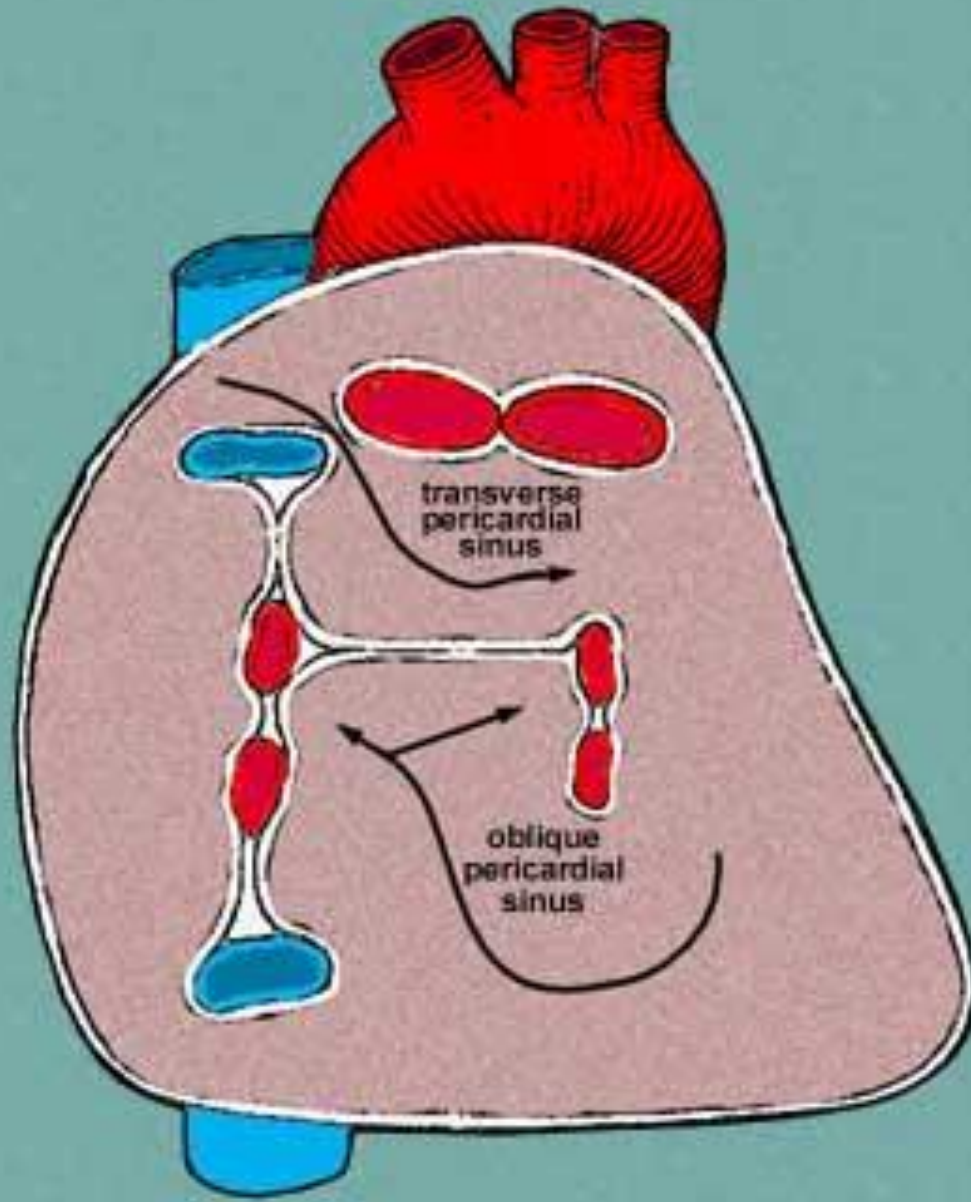
- Closed sac
- Two layers—Parietal and visceral(epicardium)
- Transverse sinus
- Oblique sinus
- Fold of left vena cava(fold of Marshall)



# SINUSES OF PERICARDIUM





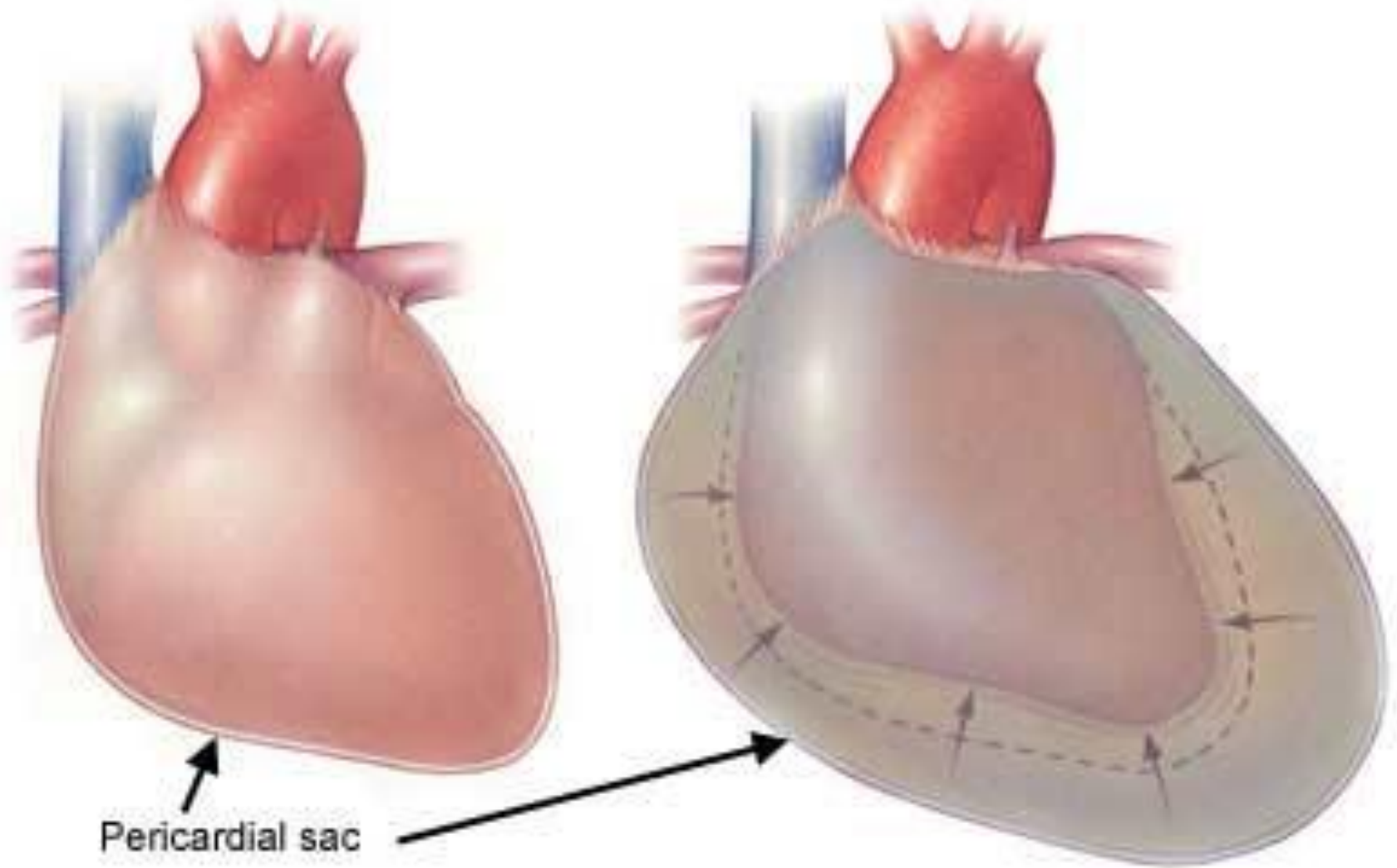


# Applied anatomy

- Pericardial tamponade
- Importance of transverse sinus
- Aspiration of pericardial fluid

## Normal pericardium

## Pericardial effusion



# Aknowledgements

- Human Anatomy by BD Chaurasia
- Gray's Anatomy
- Essentials of Human Antomy: Thorax by Asimkumar Dutta