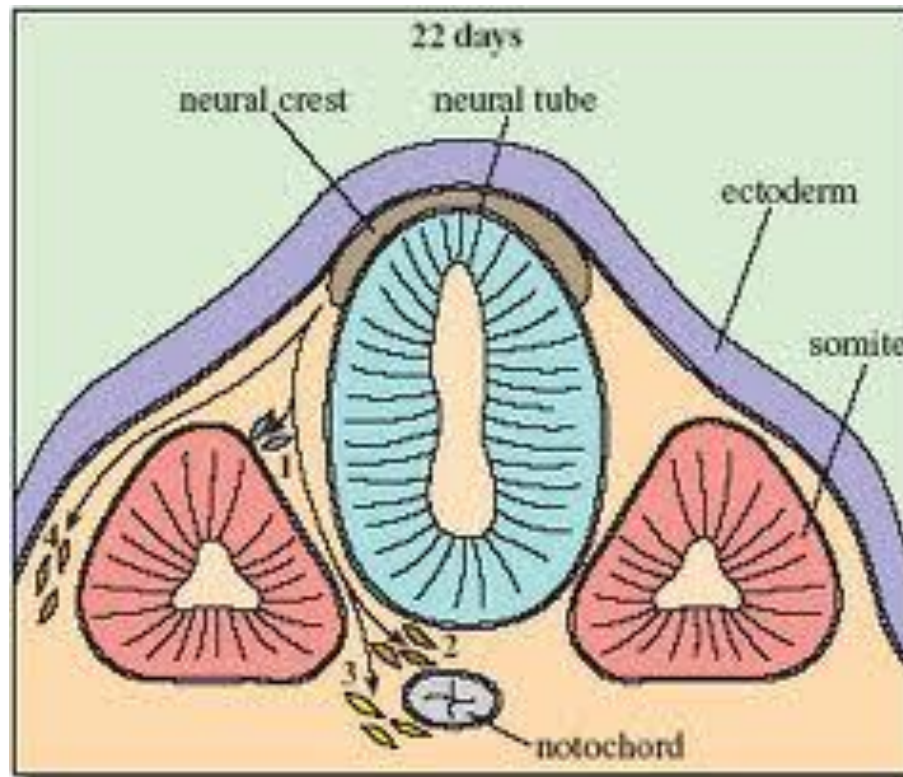
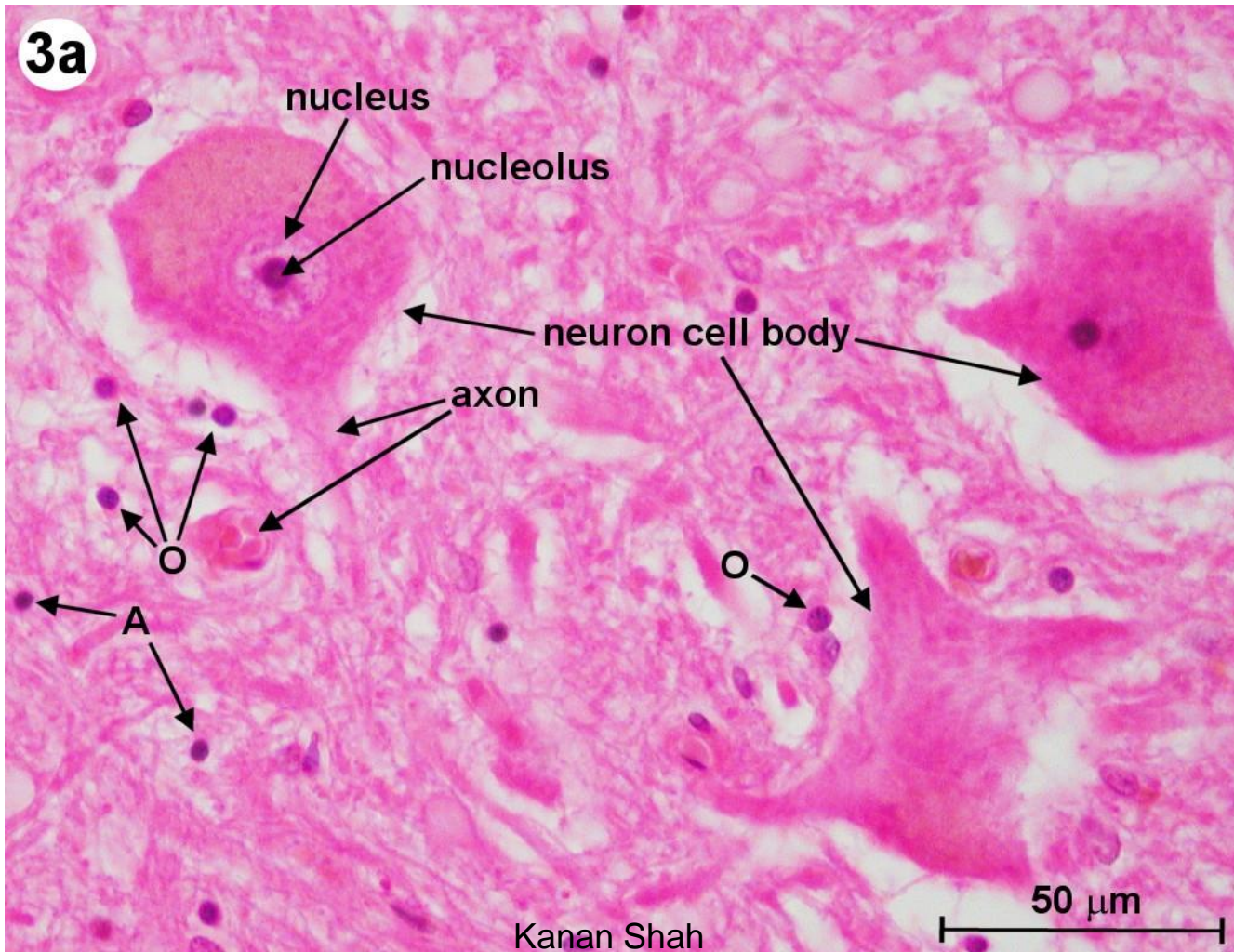


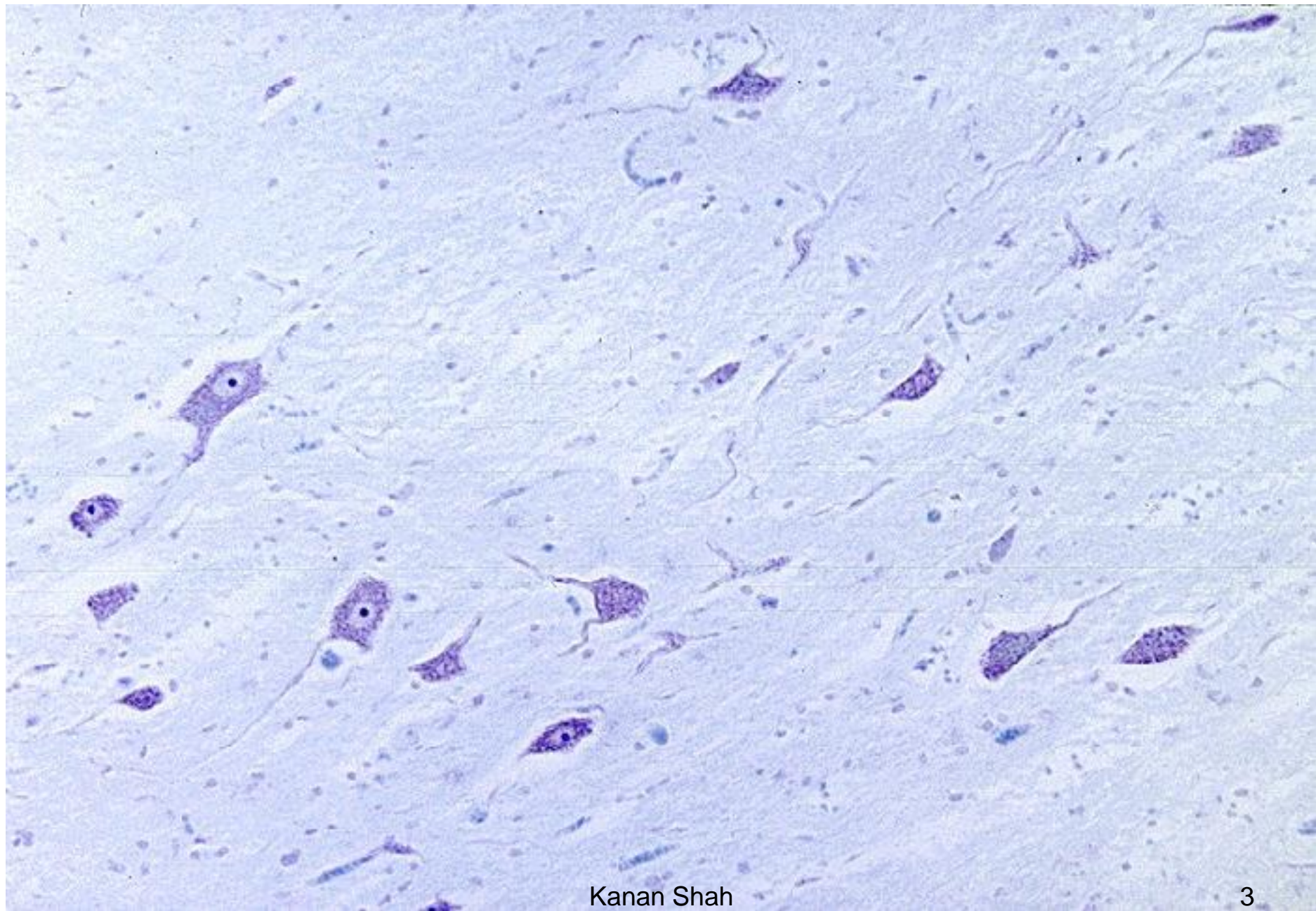
# NERVOUS SYSTEM



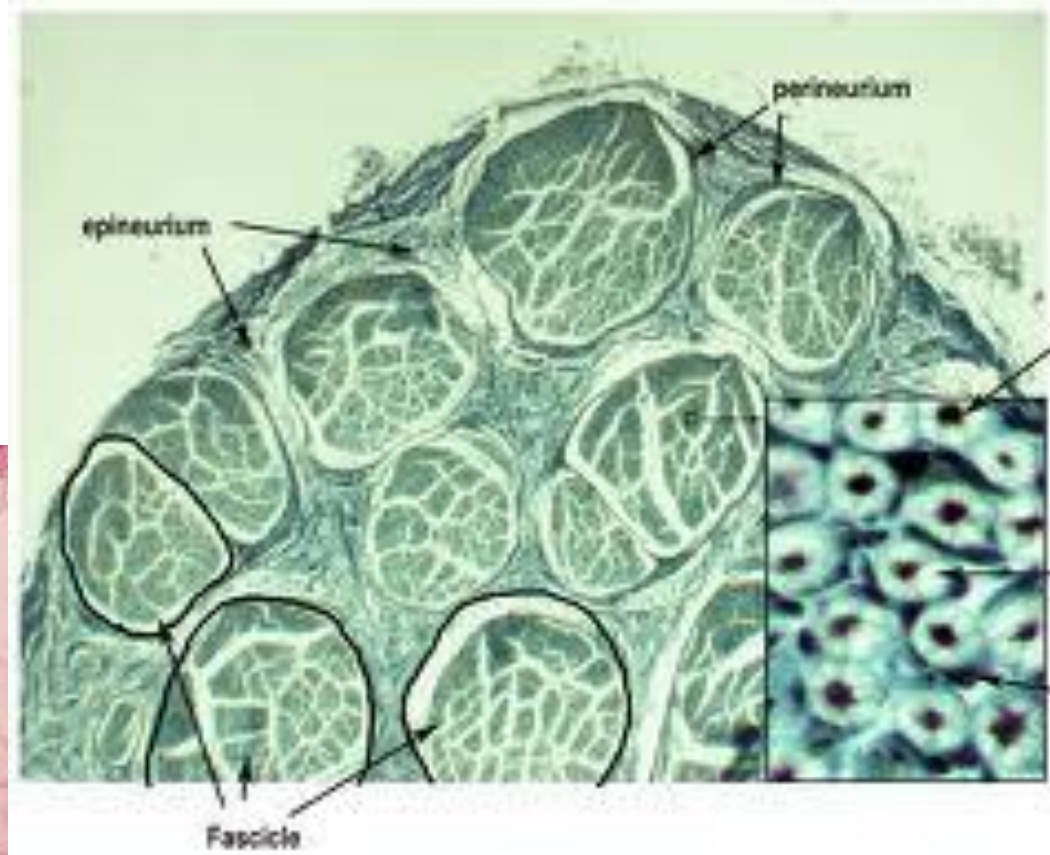
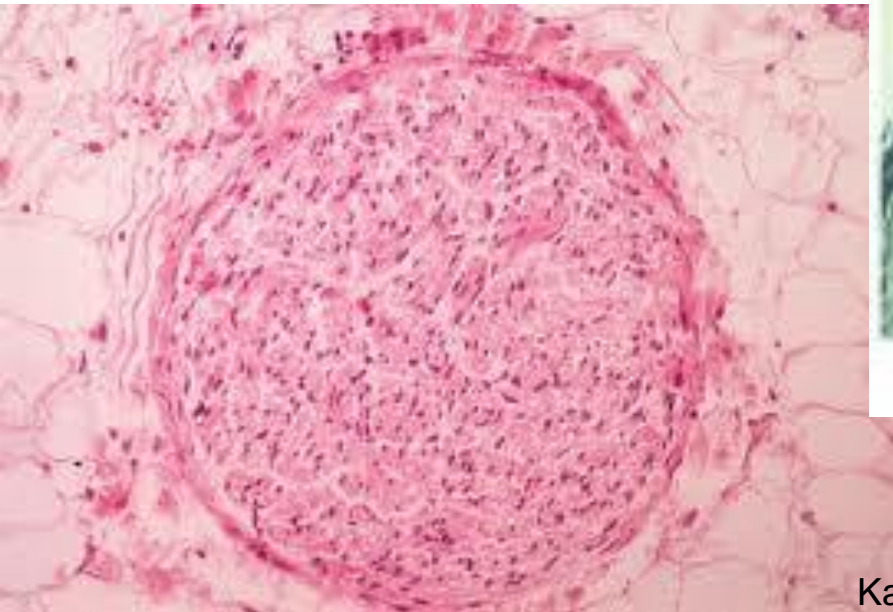
# NEURON





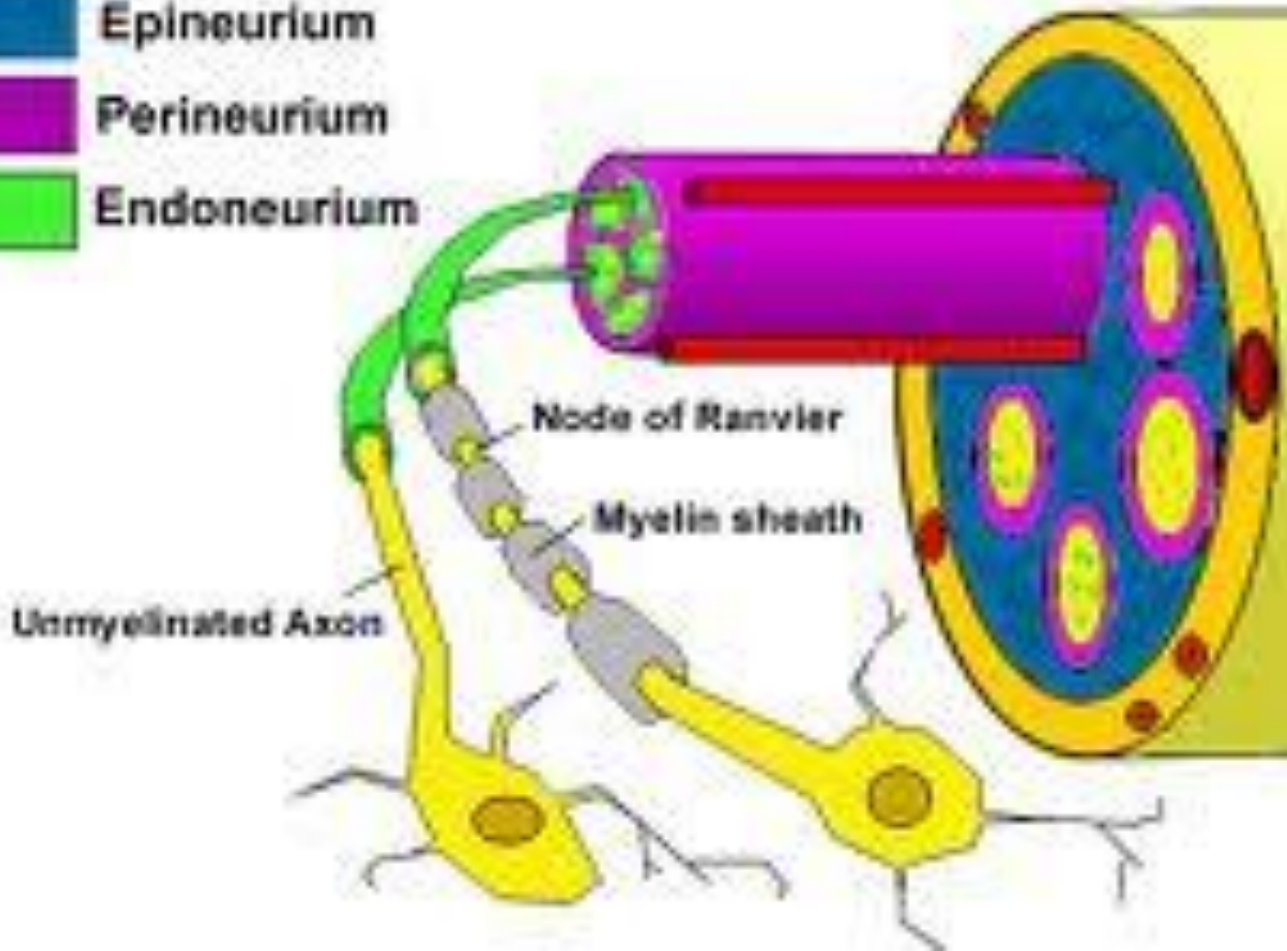


# NERVE





- Epineural sheath
- Epineurium
- Perineurium
- Endoneurium





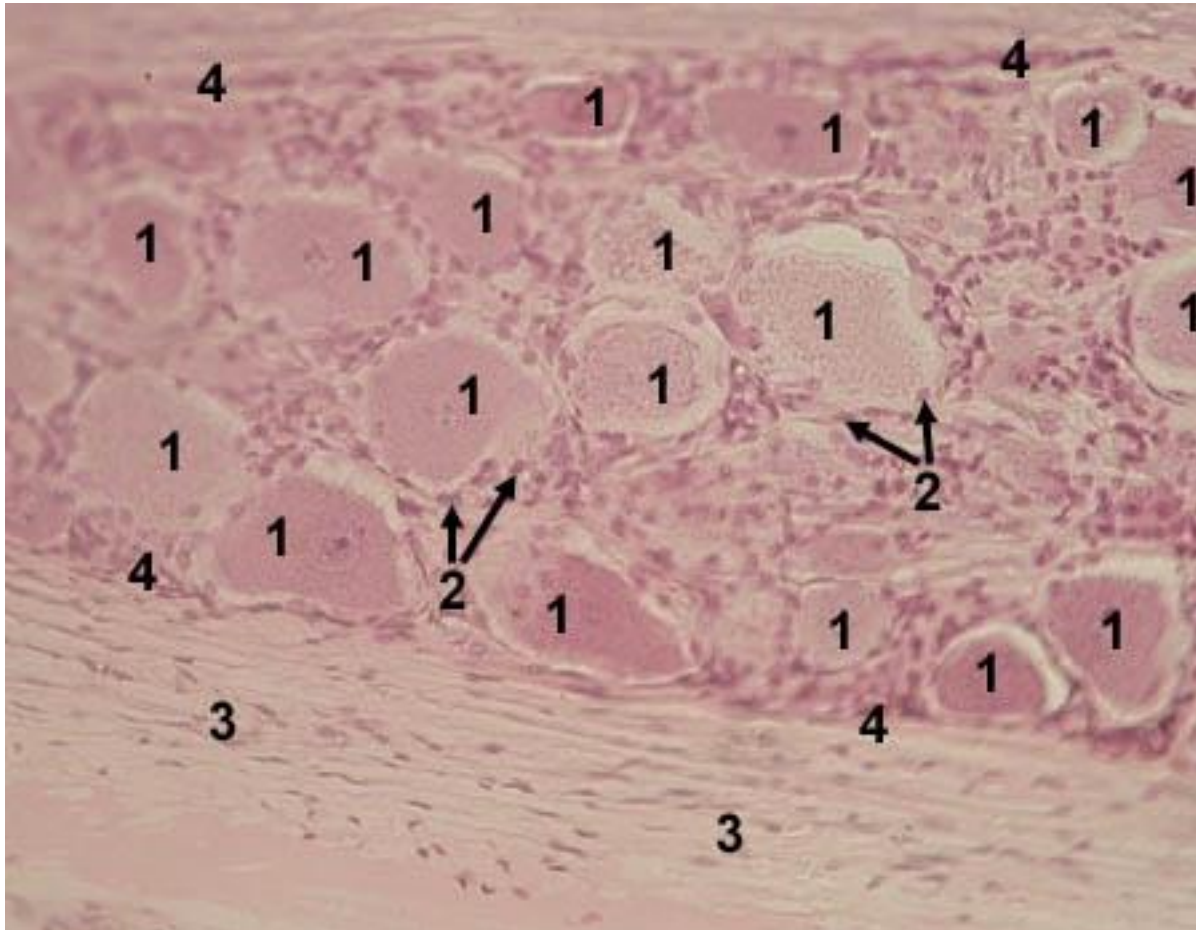


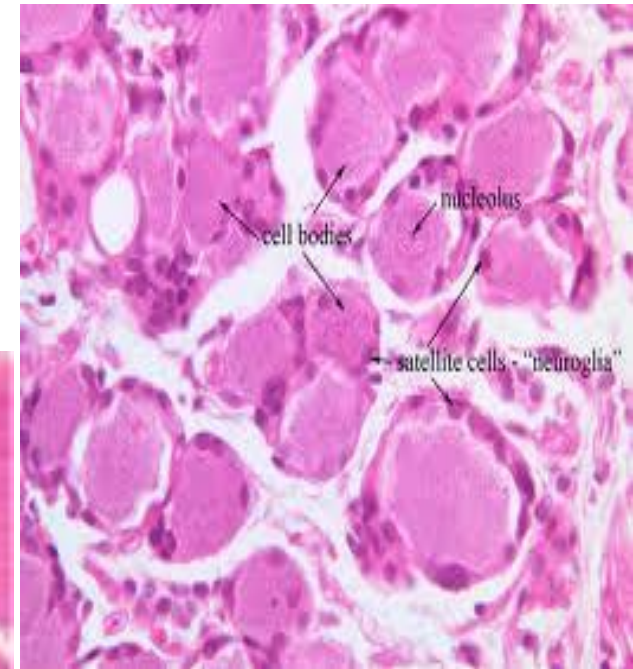
# GANGLIA

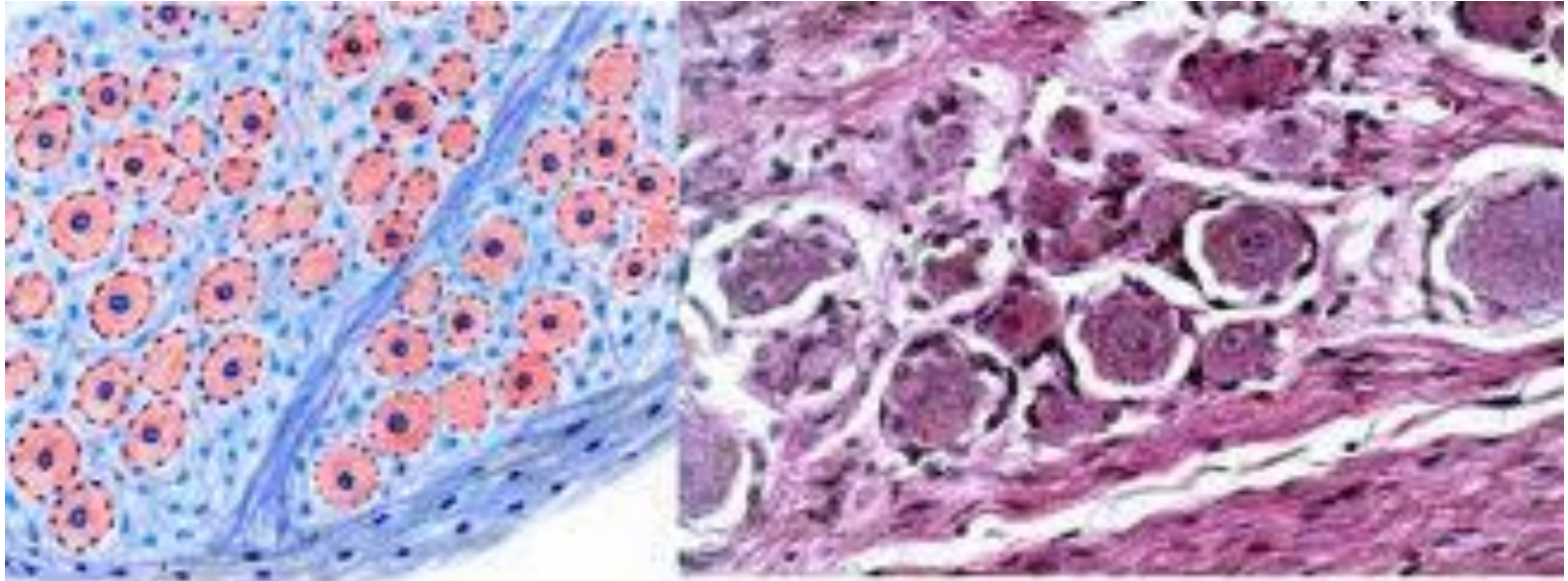
- AGGREGATION OF THE NERVE CELLS.
- TWO TYPES –
- **SENSORY** & **MOTOR (AUTONOMIC)**
  - e.g. SPINAL PSEUDOUNIPOLAR CELLS  
ROUNDED  
LARGER,  
FOUND  
IN GROUPS  
NUCLEUS CENTRALLY  
CELLS DISTRIBUTED  
PERIPHERALLY  
SATELLITE CELLS  
WELL DEFINED
  - e.g. SYMPATHETIC MULTIPOLAR  
IRREGULAR  
SMALLER,  
SCATTERED  
ECCENTRIC  
EVENLY  
POORLY DEFINED



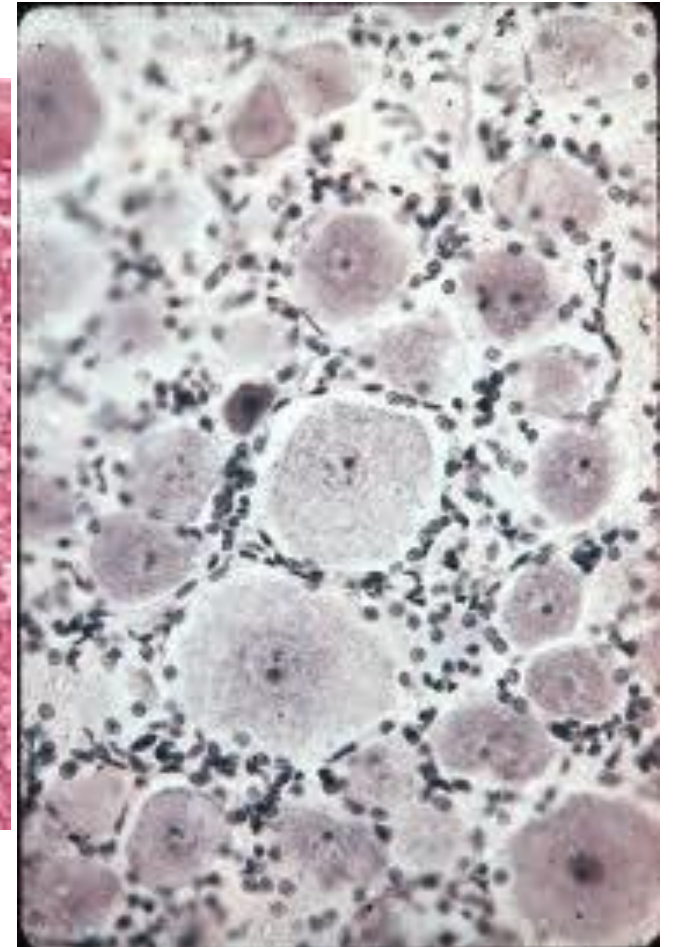
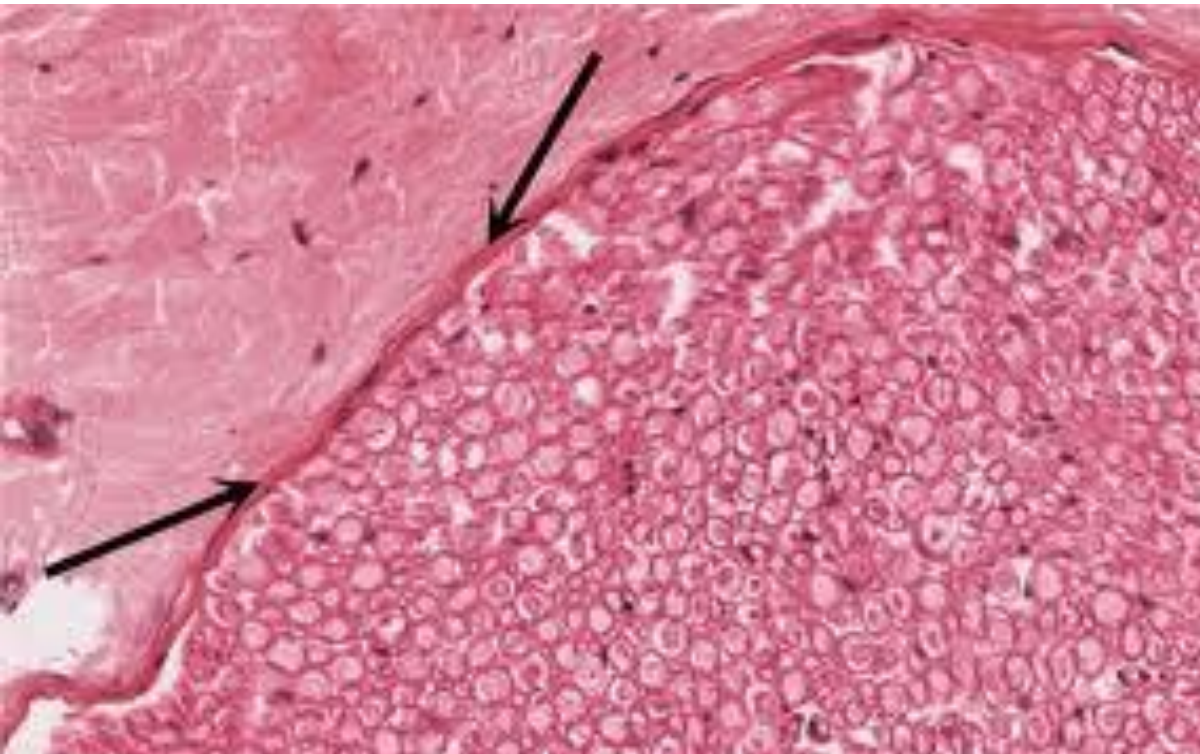
# SPINAL GANGLIA



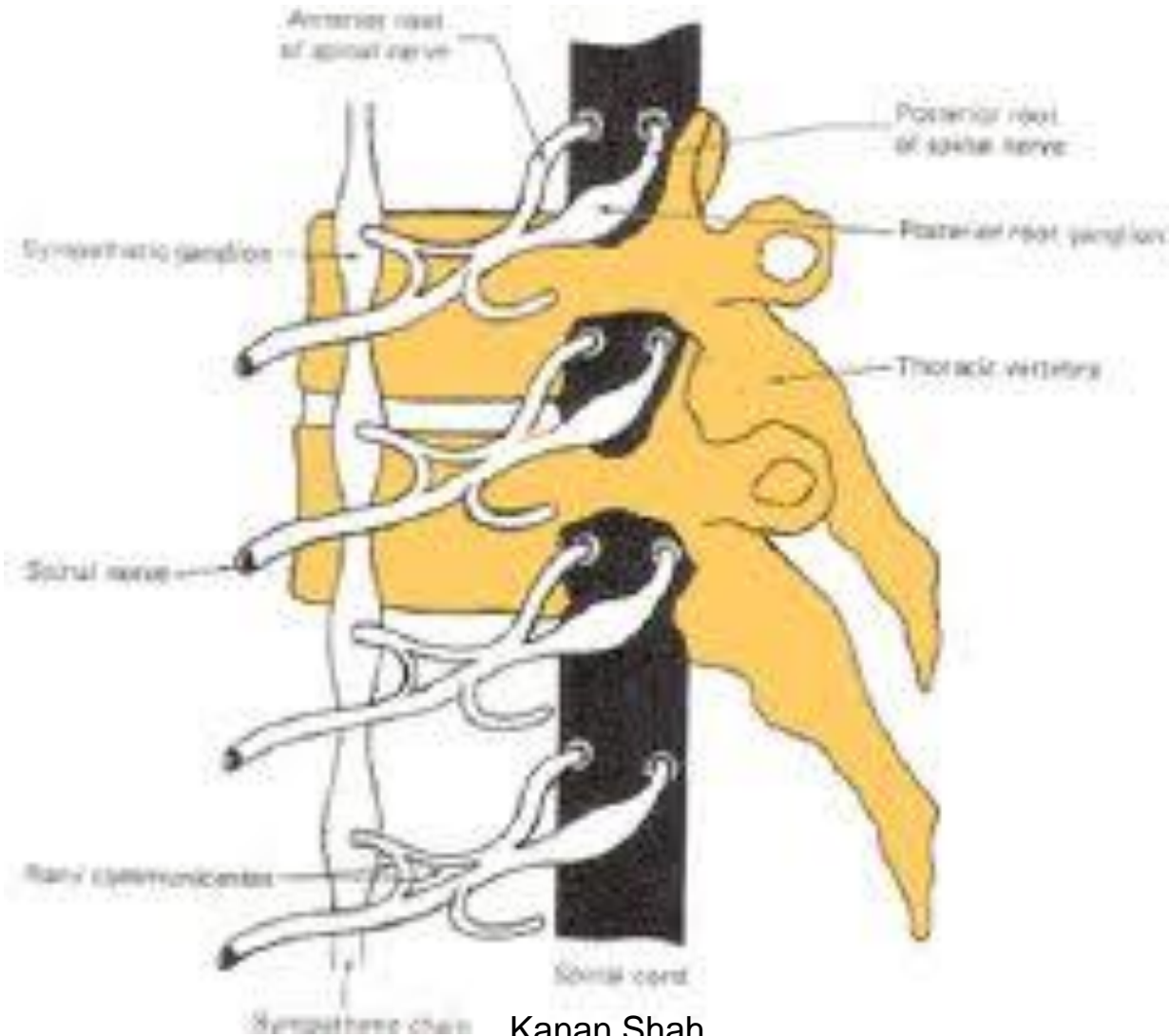


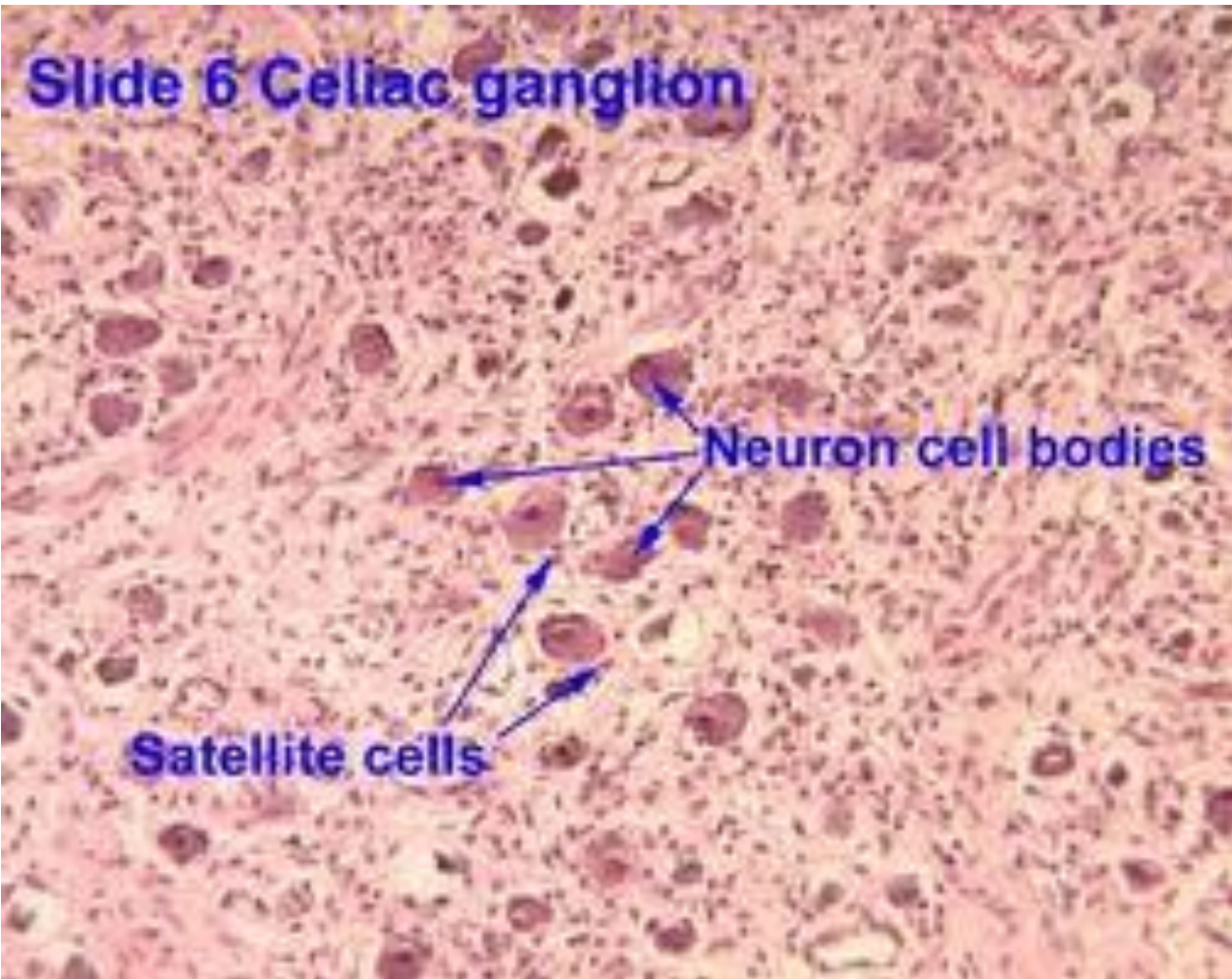




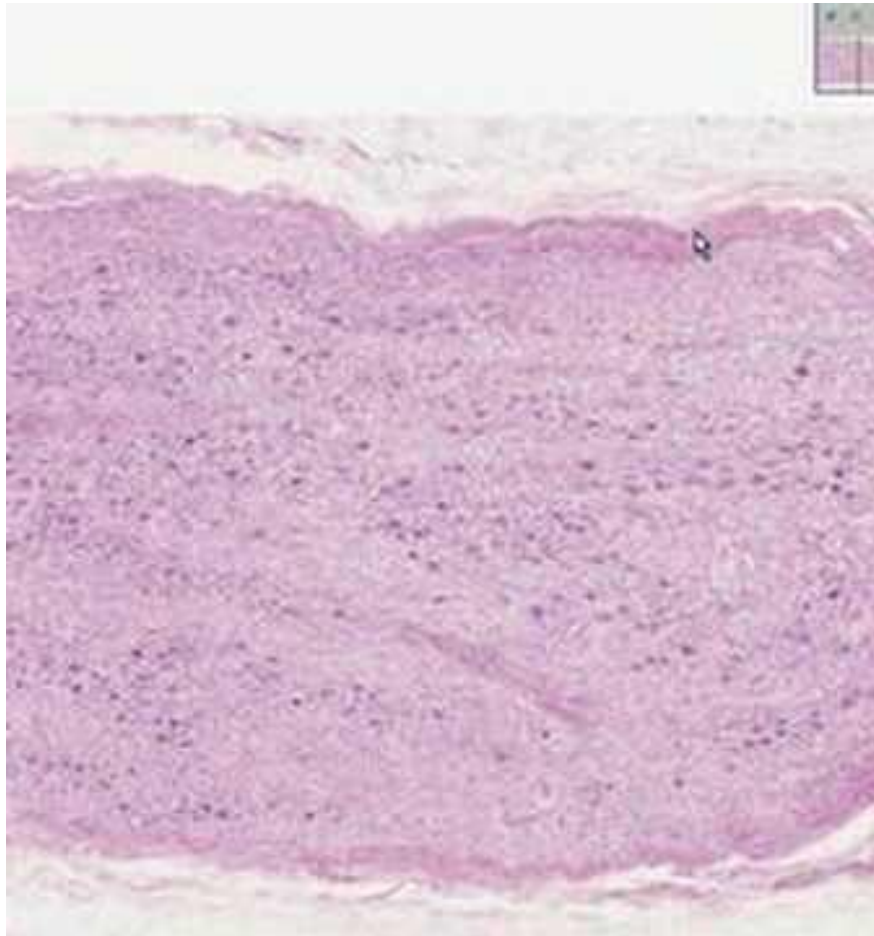


# SYMPATHETIC GANGLIA









# CEREBRUM

- OUTER GRAY MATTER
- INNER WHITE MATTER

CORTEX CONSIST OF SIX LAYERS

OUTERMOST MOLECULAR LAYER

OUTER GRANULAR LAYER

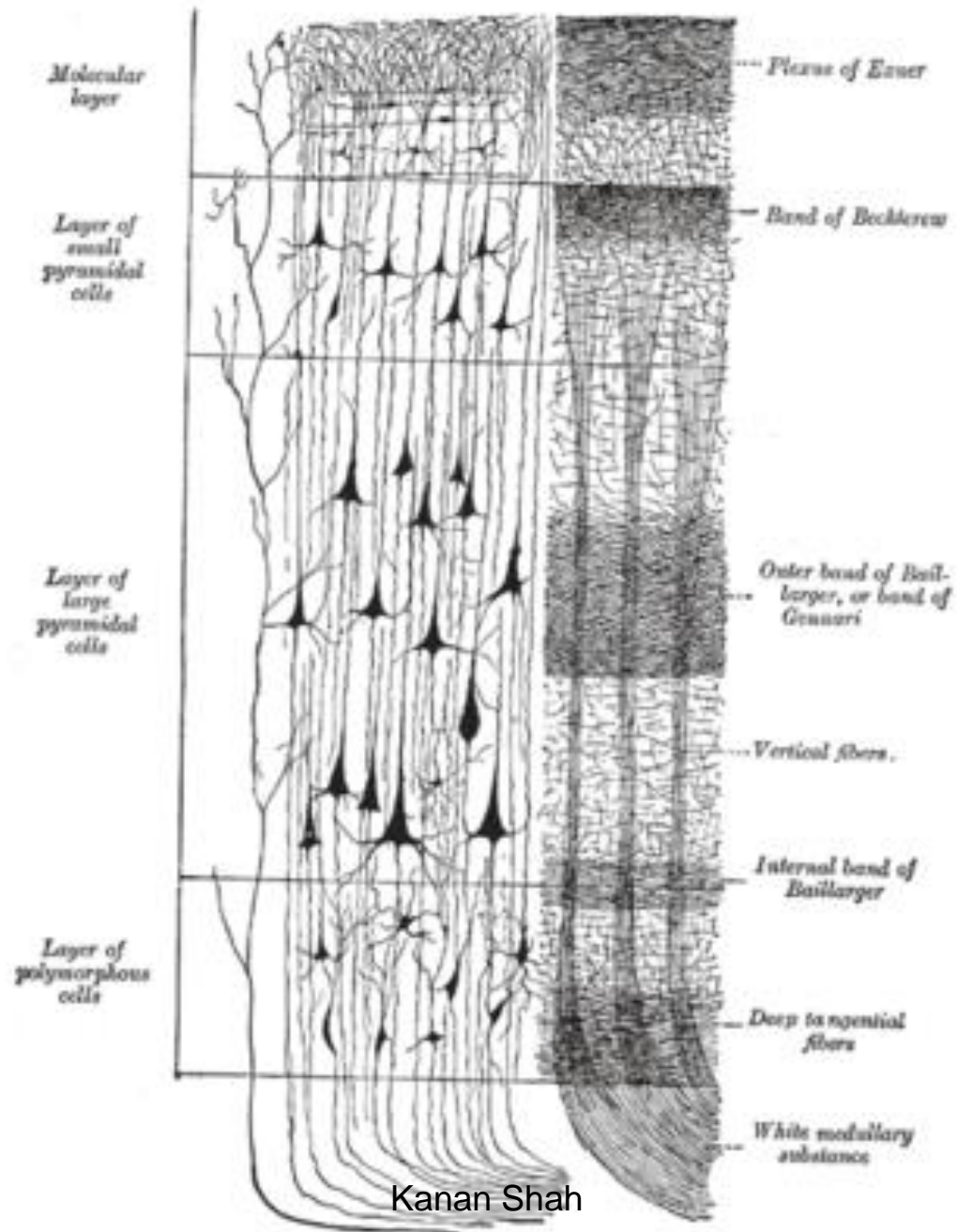
PYRAMIDAL CELL LAYER

INNER GRANULAR LAYER

GANGLIONIC CELL LAYER

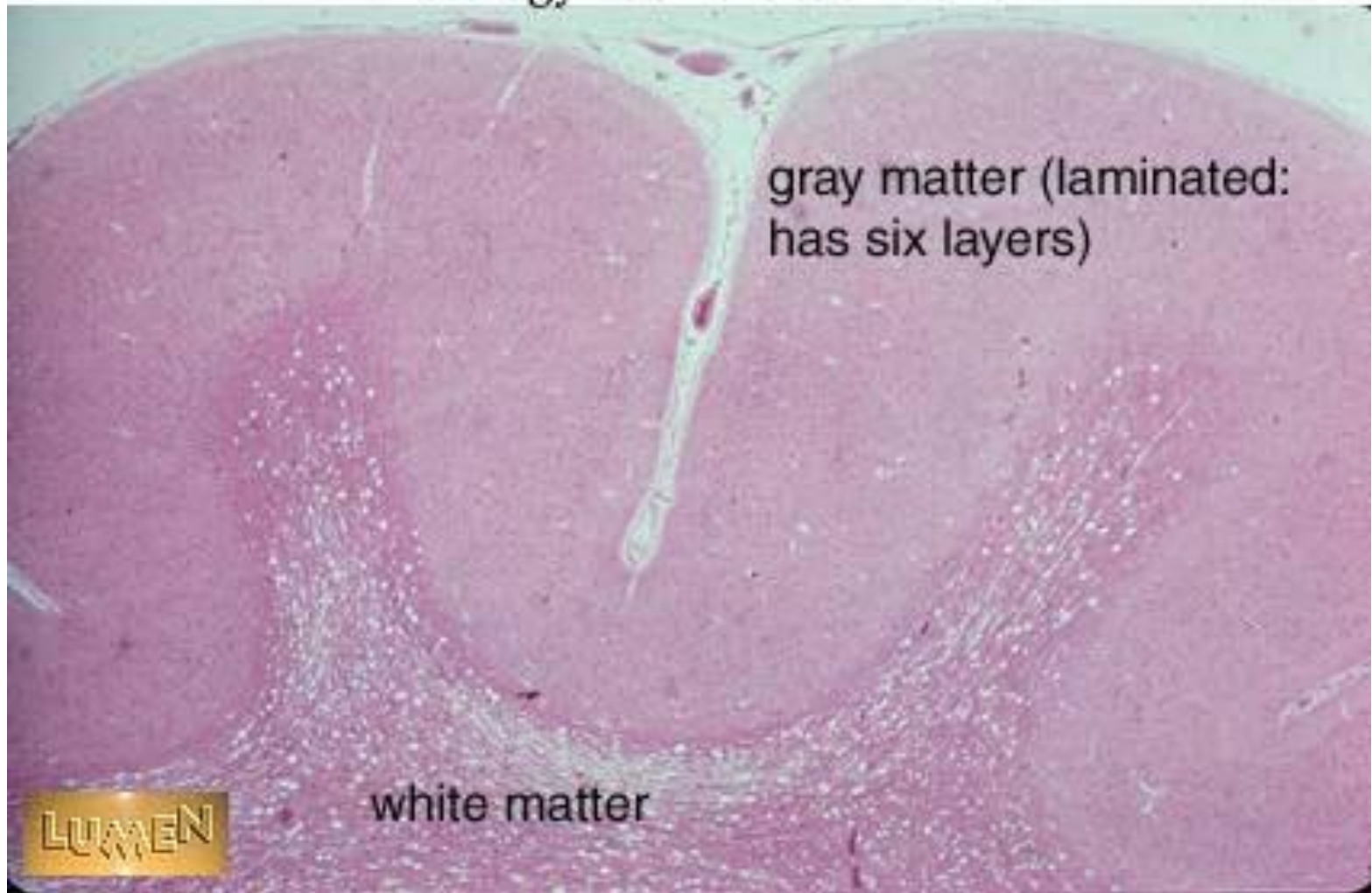
POLYMORPHOUS CELL LAYER

WHITE MATTER – INTERLACING BUNDLES OF  
MYELINATEDNERVE FIBERS



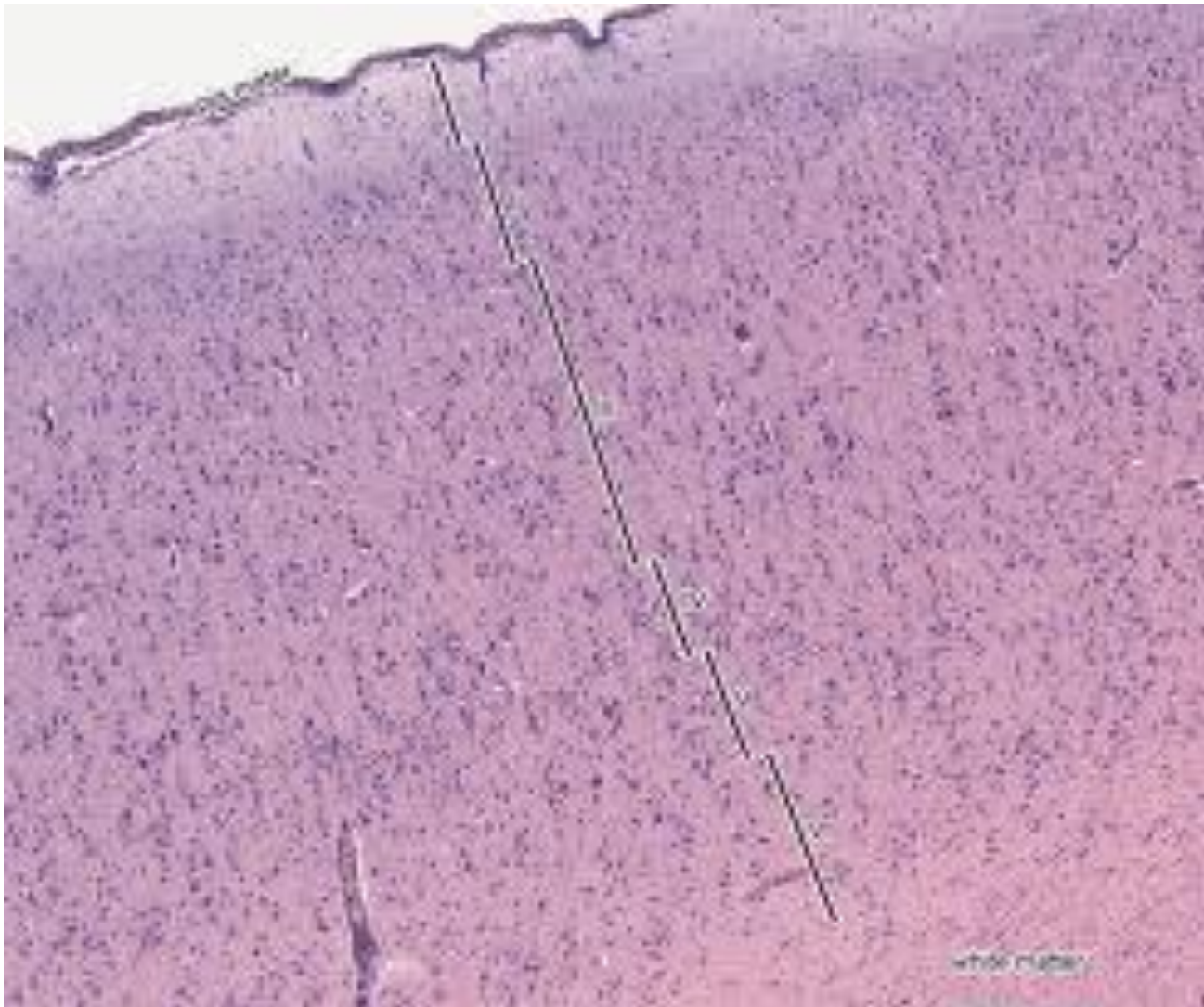


## Histology Lab Part 6: Slide 26



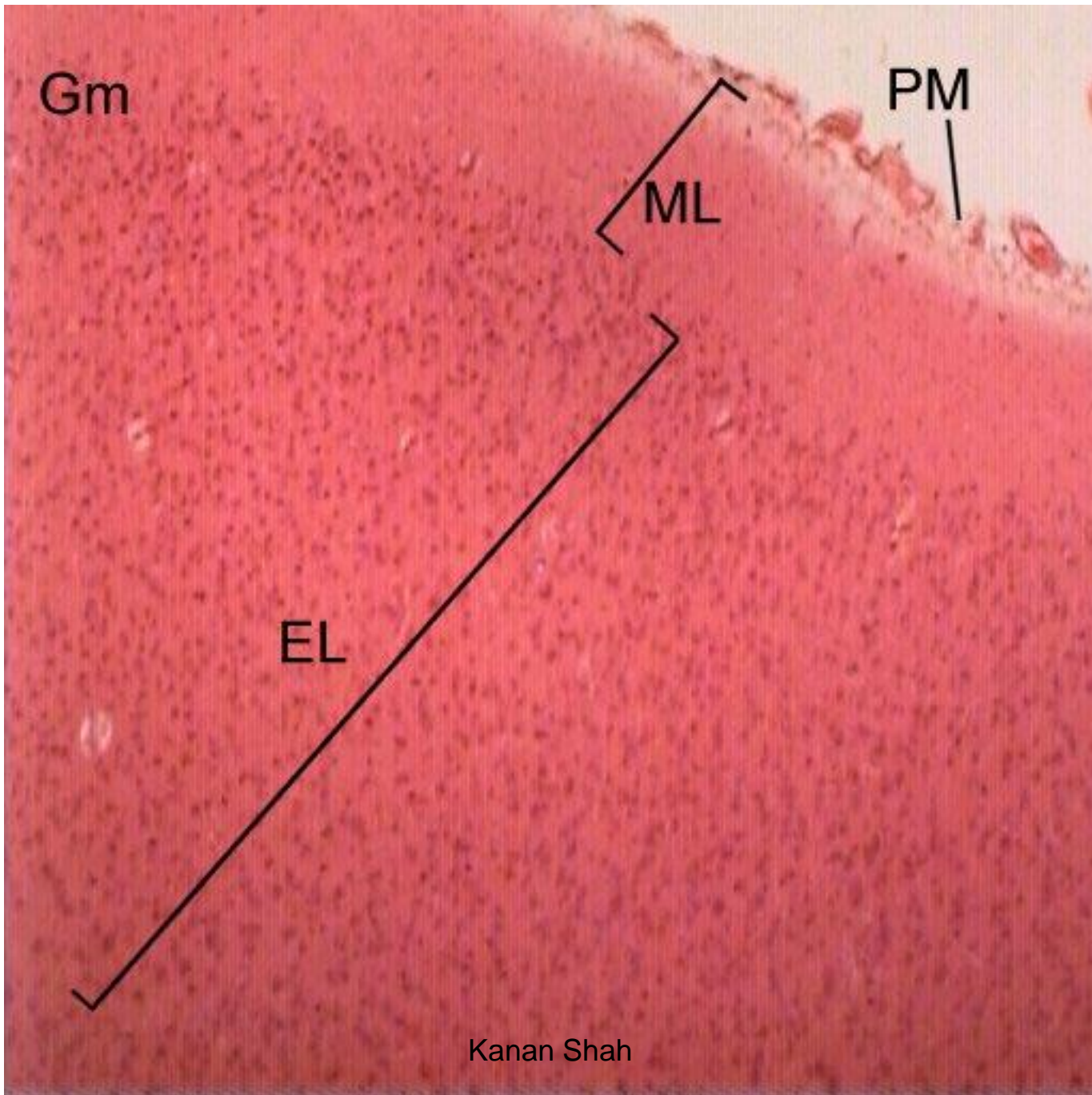


Kanan Shah



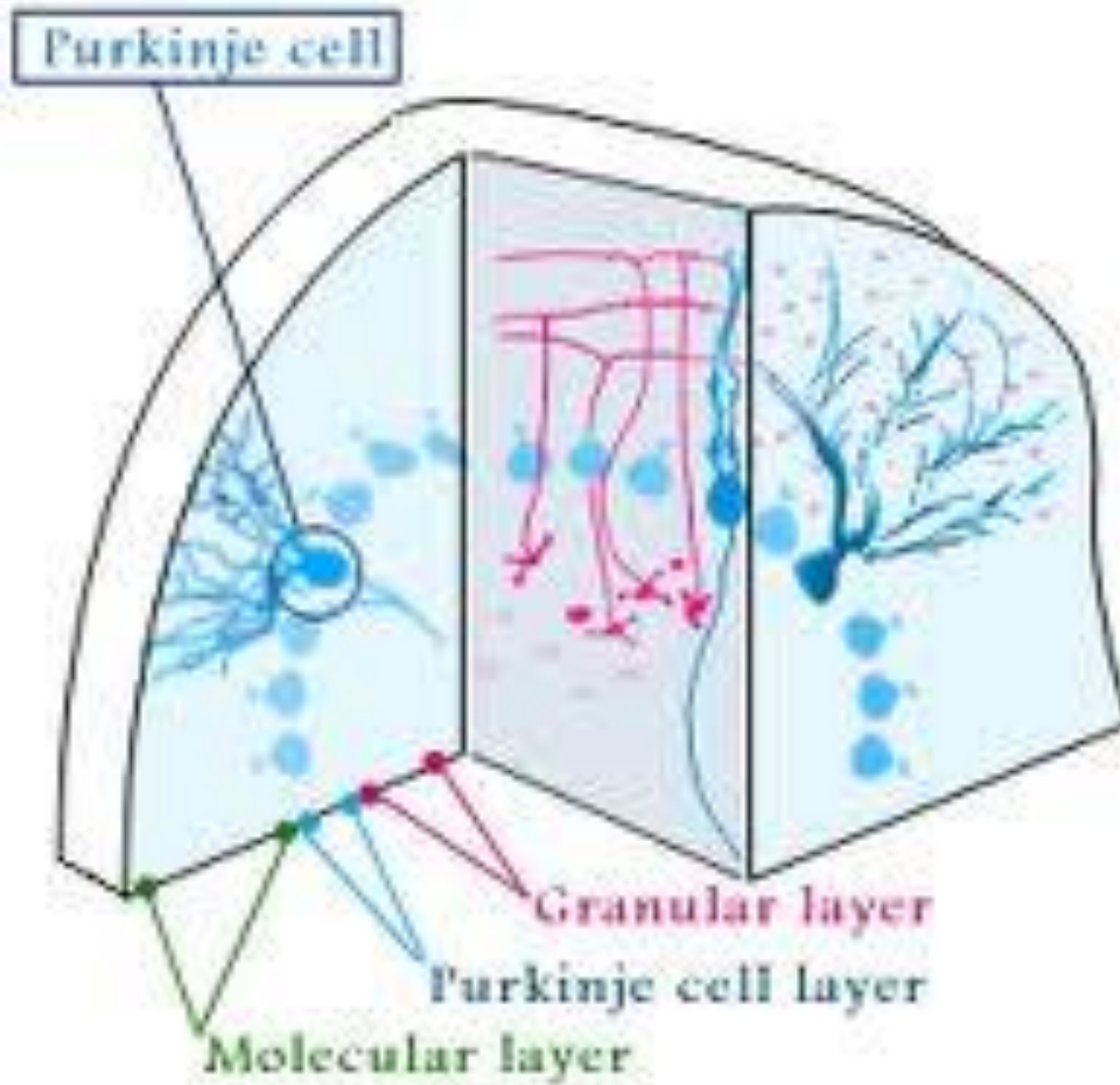
Kanan Shah



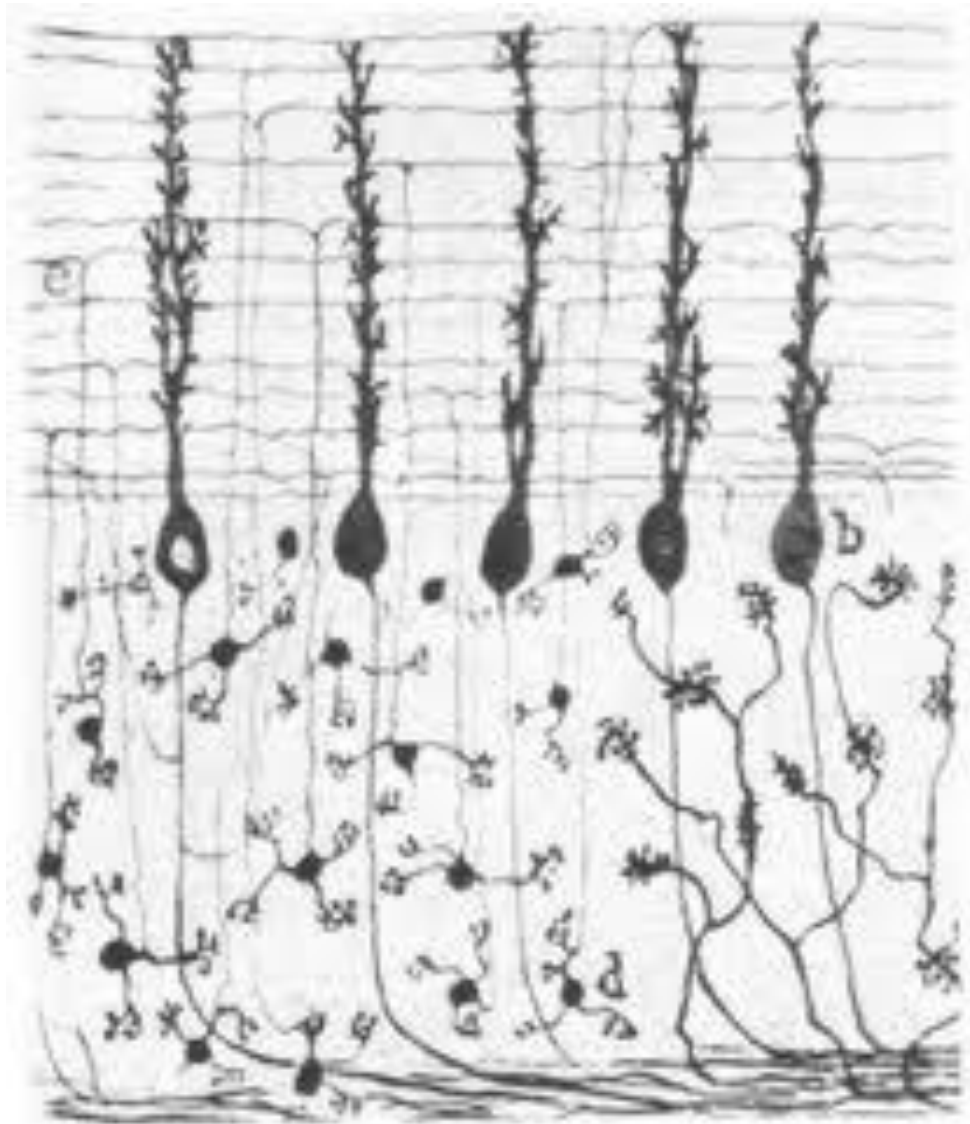


# CEREBELLUM

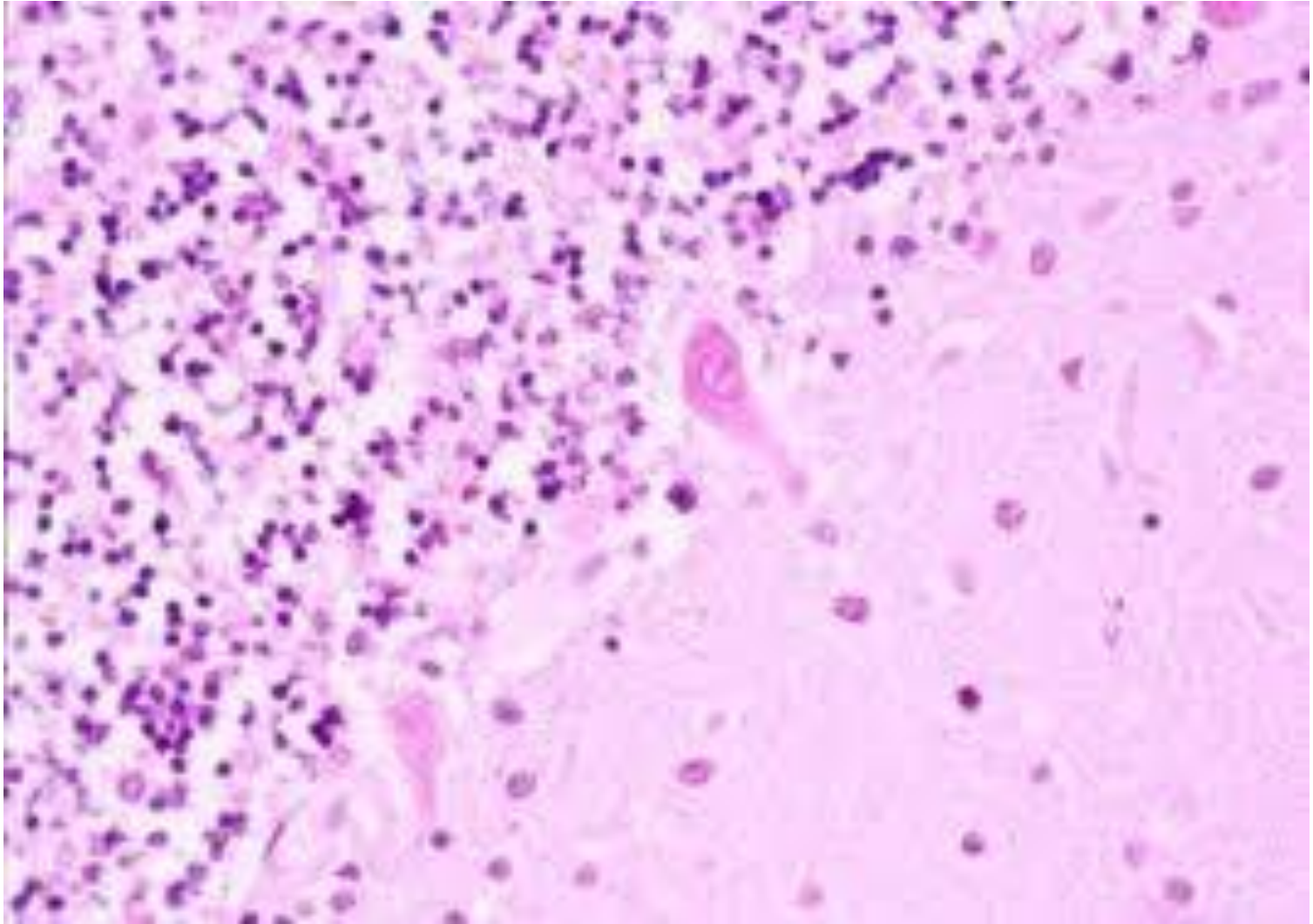
- OUTER GRAY MATTER – THIN CORTEX
- INNER WHITE MATTER
- CEREBELLAR NUCLEI
- CORTEX – THREE LAYER
  - OUTER MOLECULAR LAYER
  - MIDDLE PURKINJE'S CELL LAYER
  - INNER GRANULAR LAYER



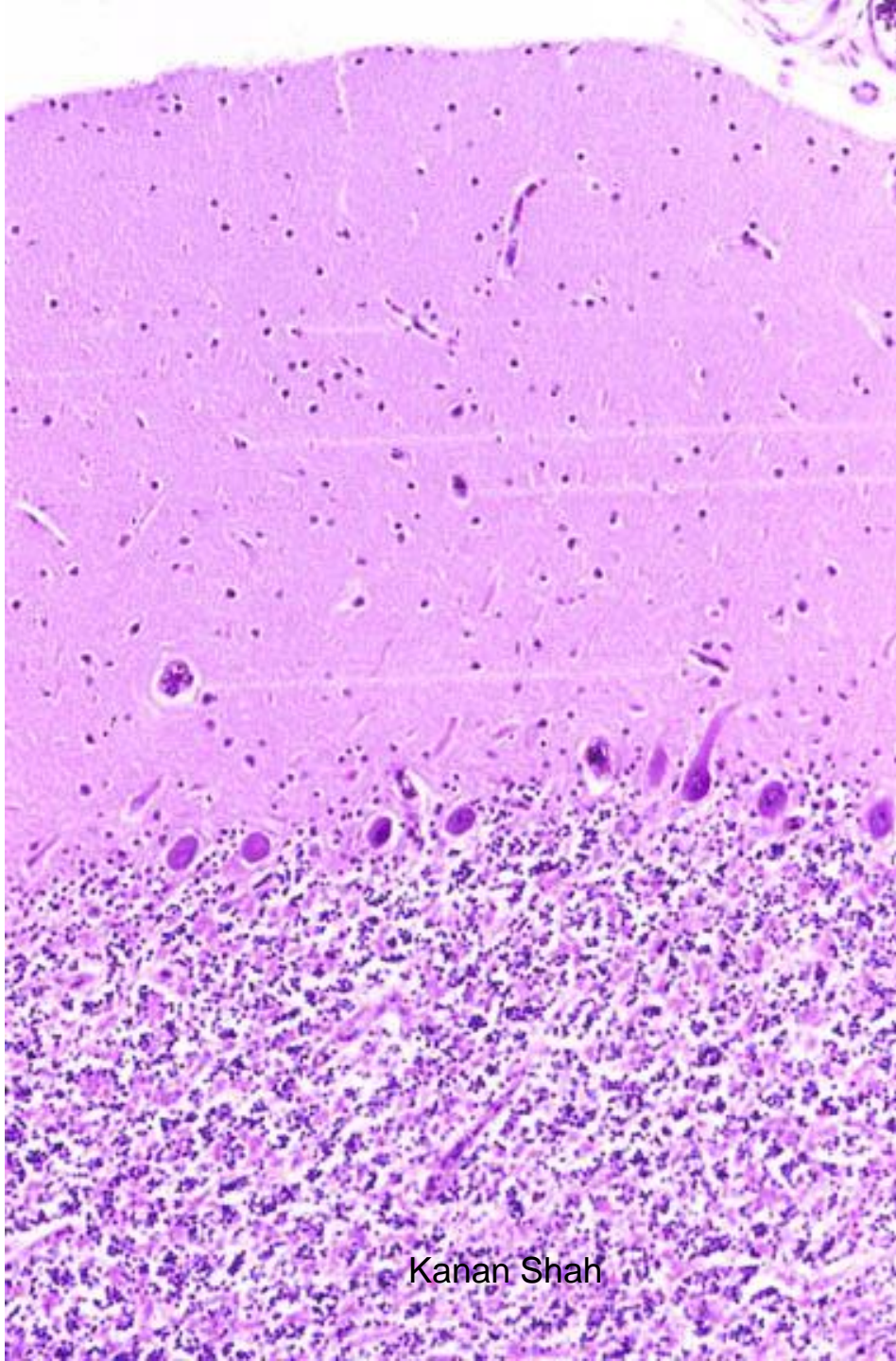


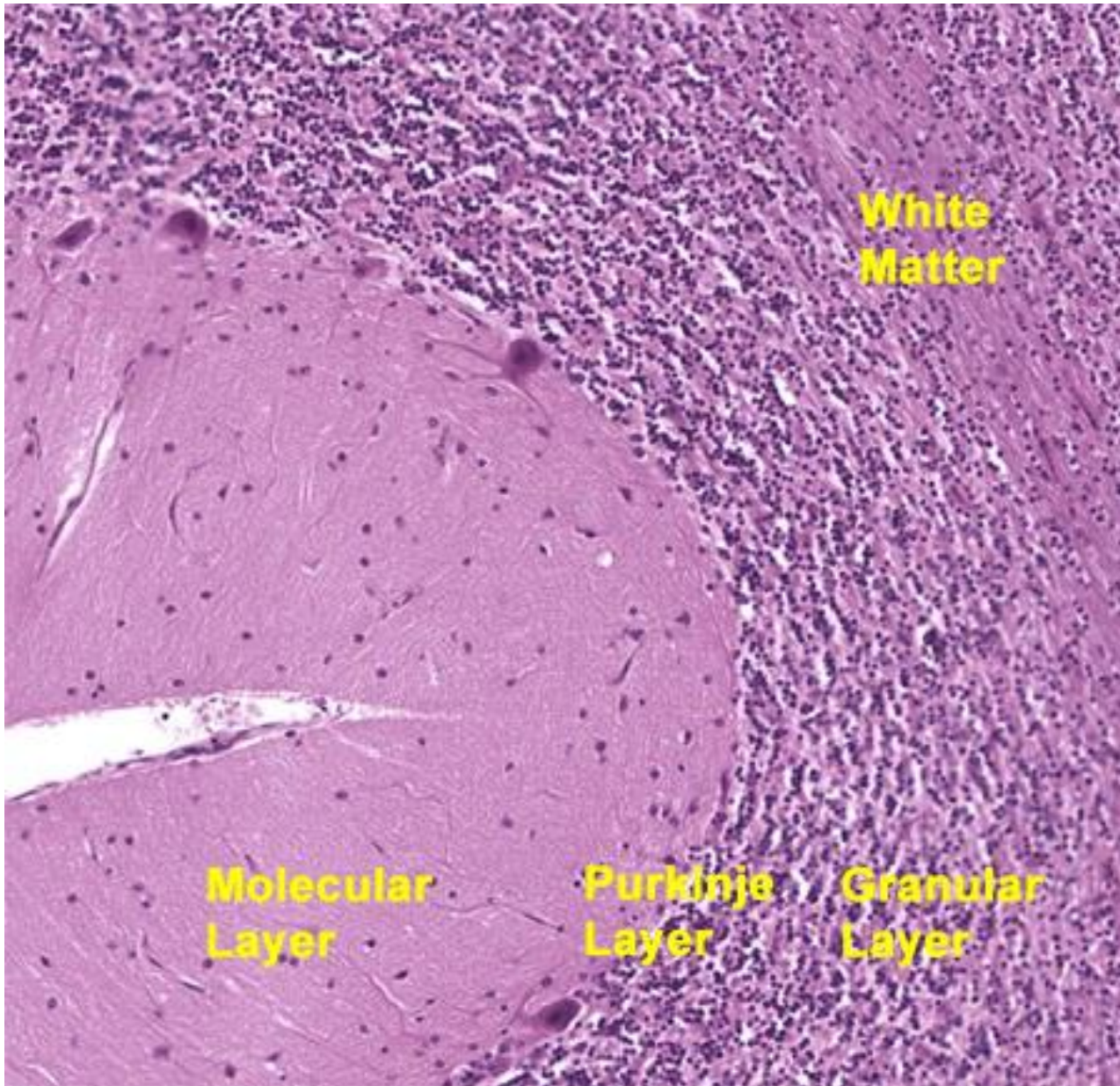




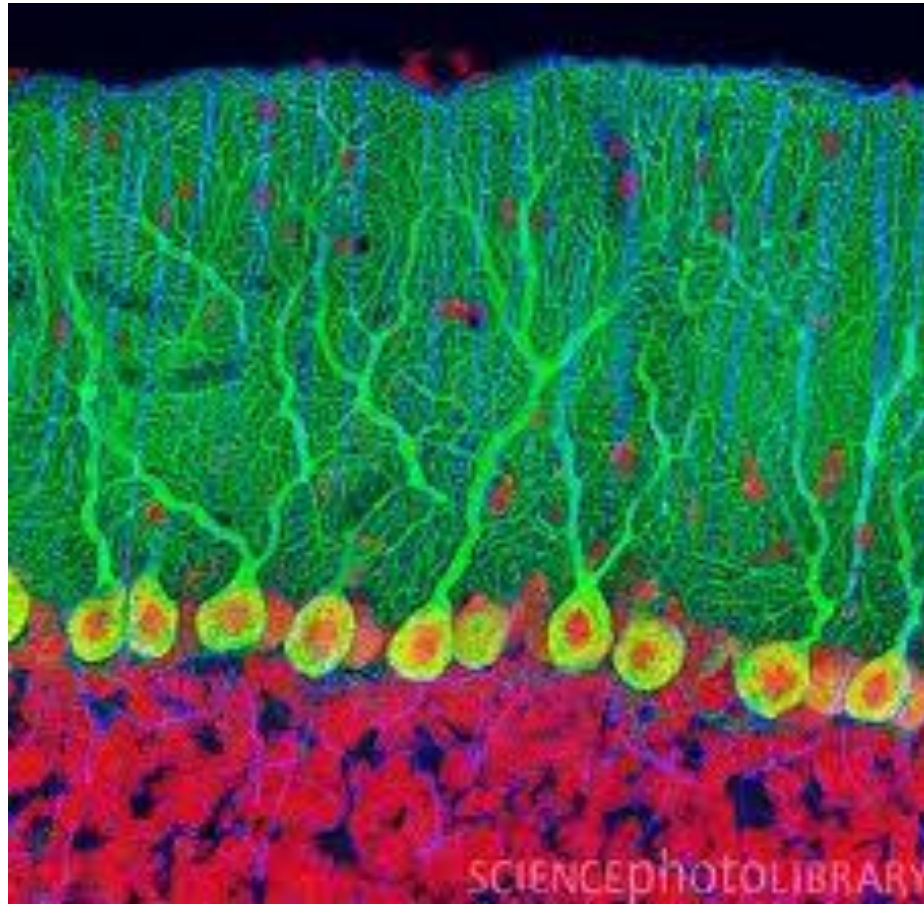




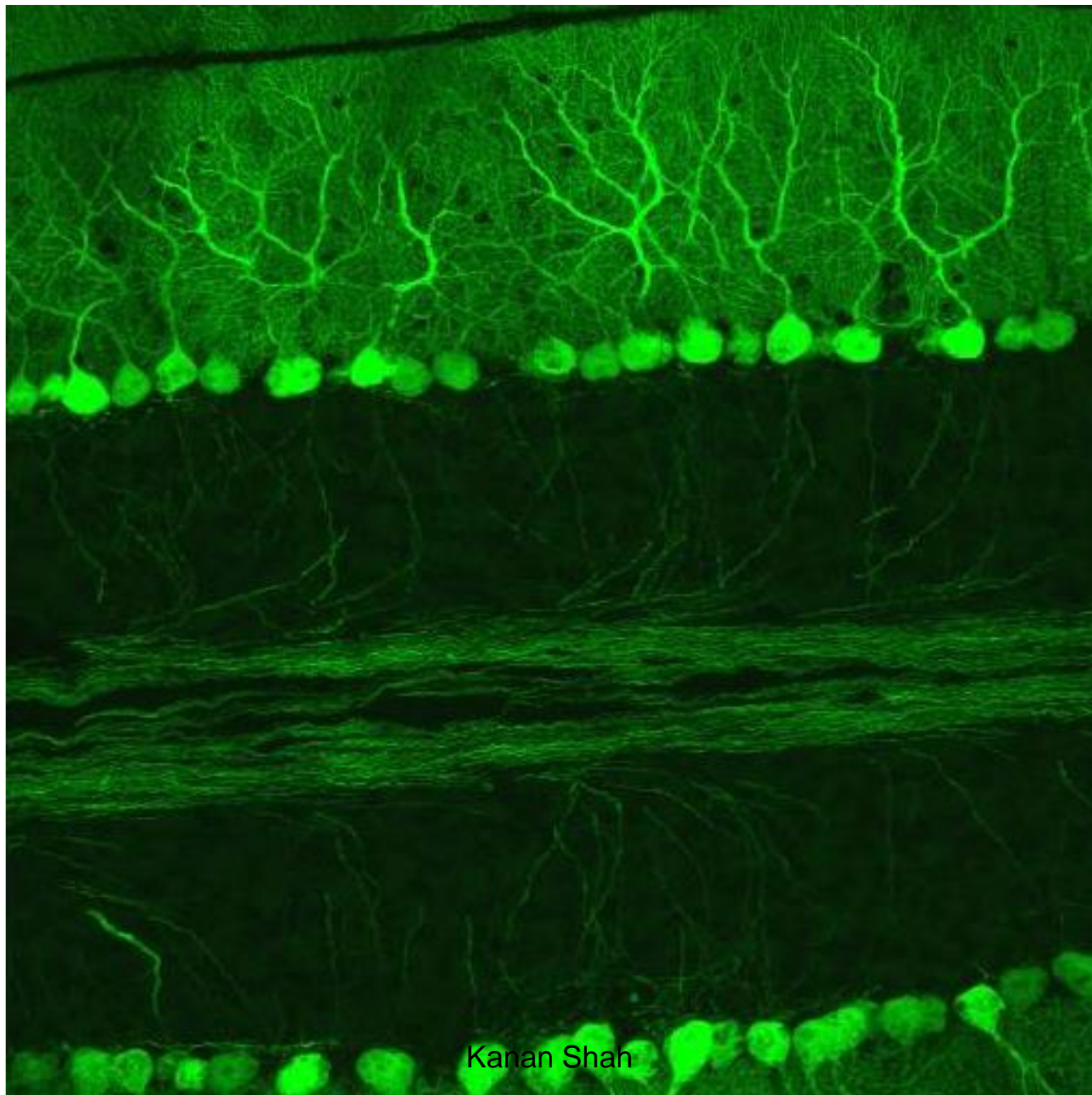










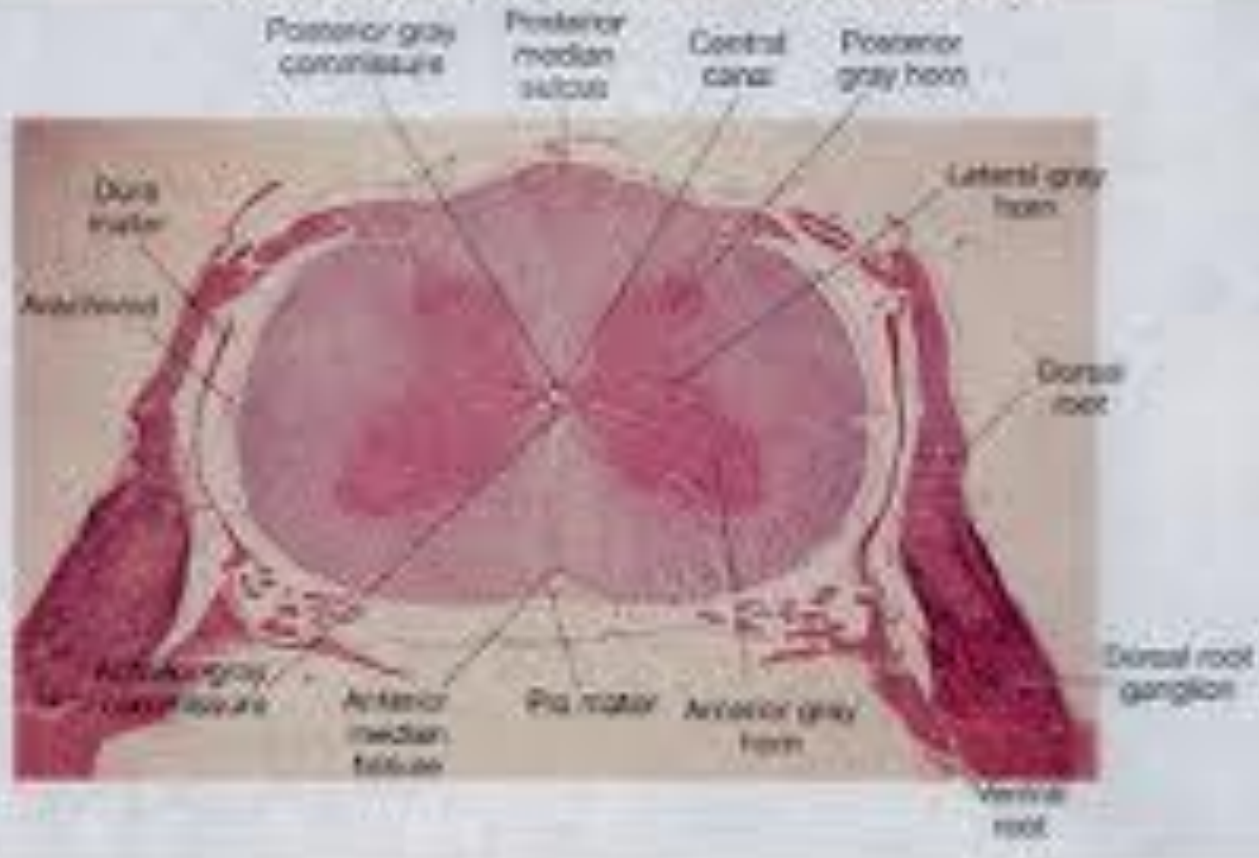


Kanan Shah

# SPINAL CORD

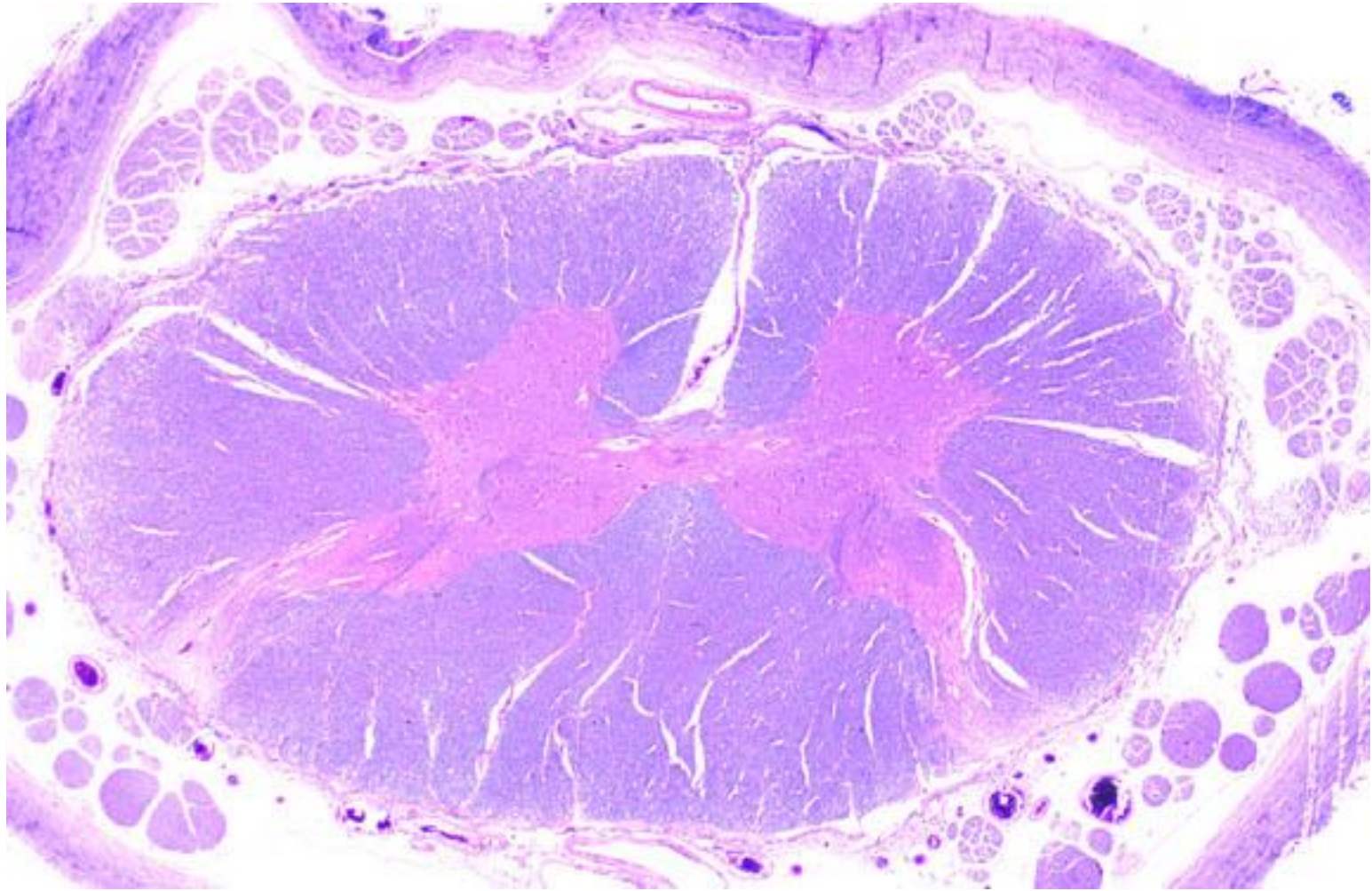
- OUTER WHITE MATTER
- INNER GRAY MATTER
- GREY MATTER – “ H “ SHAPED
- WHITE MATTER CONSIST OF MYELINATED NERVE FIBERS NEURILEMMA SHEATH IS ABSENT.
- SURROUNDED BY THREE MENINGES.

# Spinal Cord w/ Ganglion









# Aknowledgement

- Inderbir Singh's Textbook of Human Histology
- Textbook of Histology- Atlas and Practical Guide by JP Gunasegaran
- Difiore's Atlas of Histology
- Images from Google
- Histology Text & Atlas -Brijeshkumar