

INTEGUMENTARY SYSTEM

SKIN

- THICK & THIN SKIN
- HAIRY & NONHAIRY SKIN
- TWO LAYERS 1) EPIDERMIS 2) DERMIS
- EPIDERMIS HAS FIVE LAYERS

STRATUM BASALE

STRATUM SPINOSUM

STRATUM GRANULOSUM

STRATUM LUCIDUM

STRATUM CORNEUM

DERMIS -----PAPILLARY LAYER

RETICULAR LAYER

Skin, thick H&E



epidermis

dermal papillae

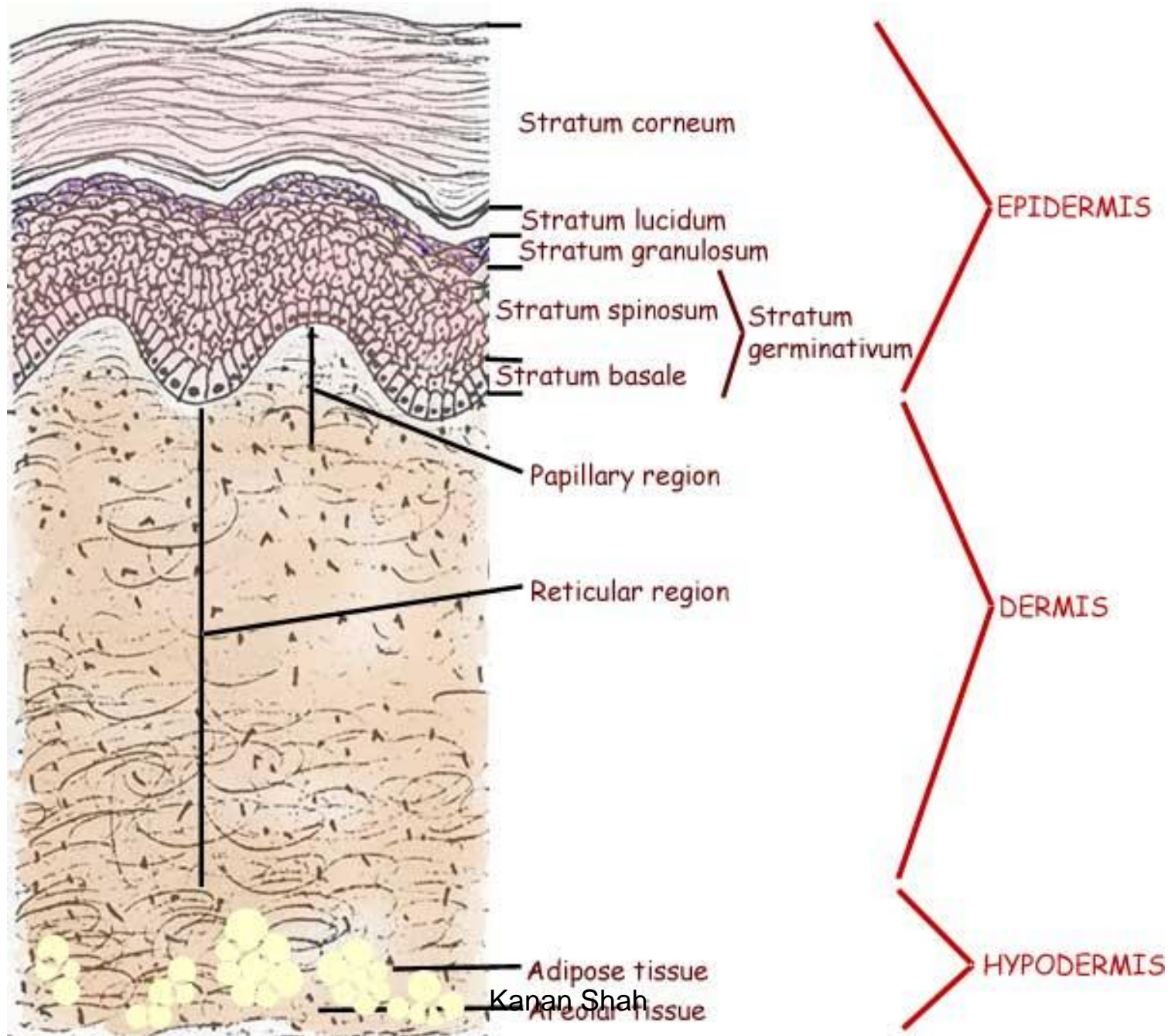
dense irregular connective tissue

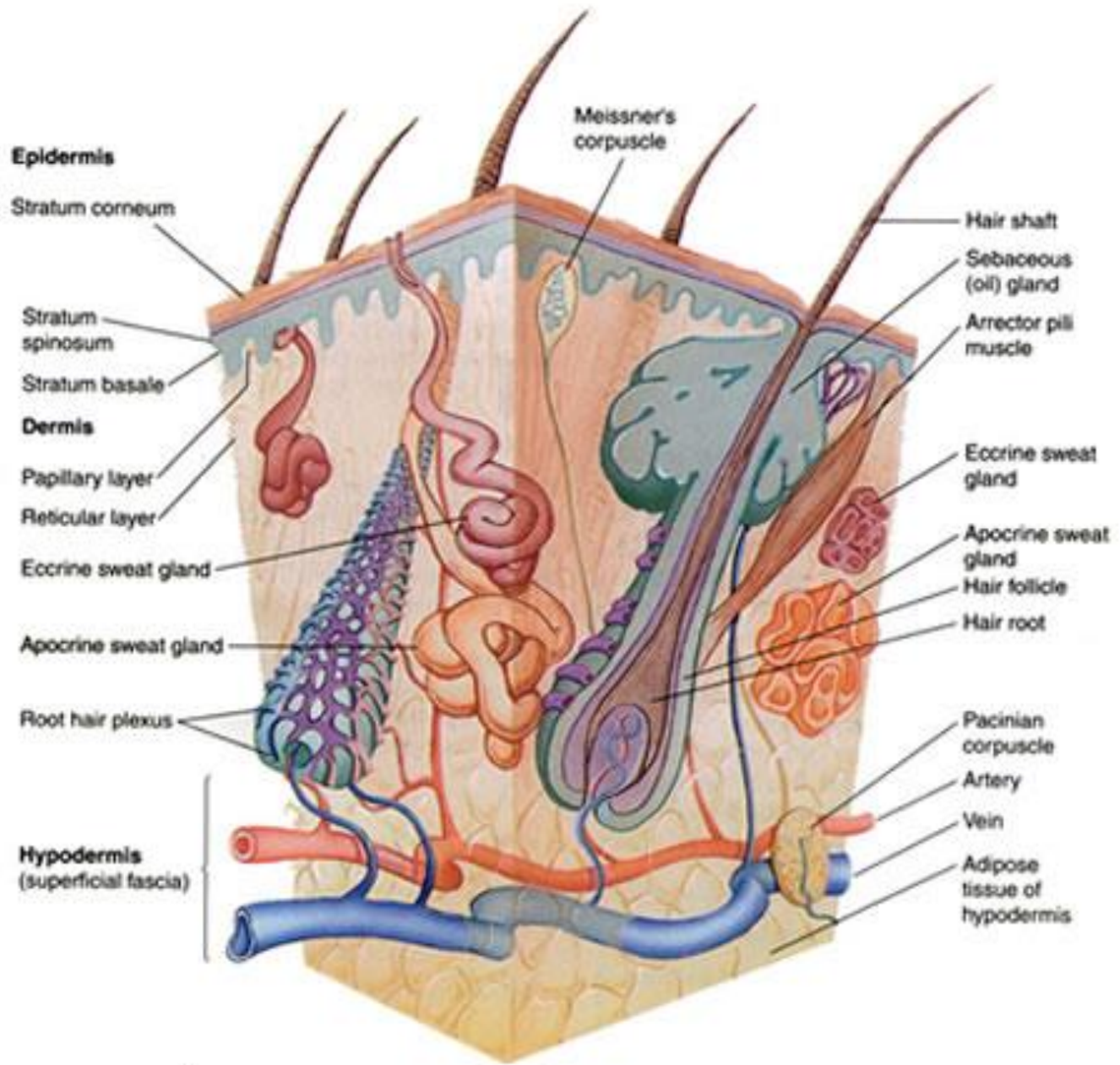
dermis

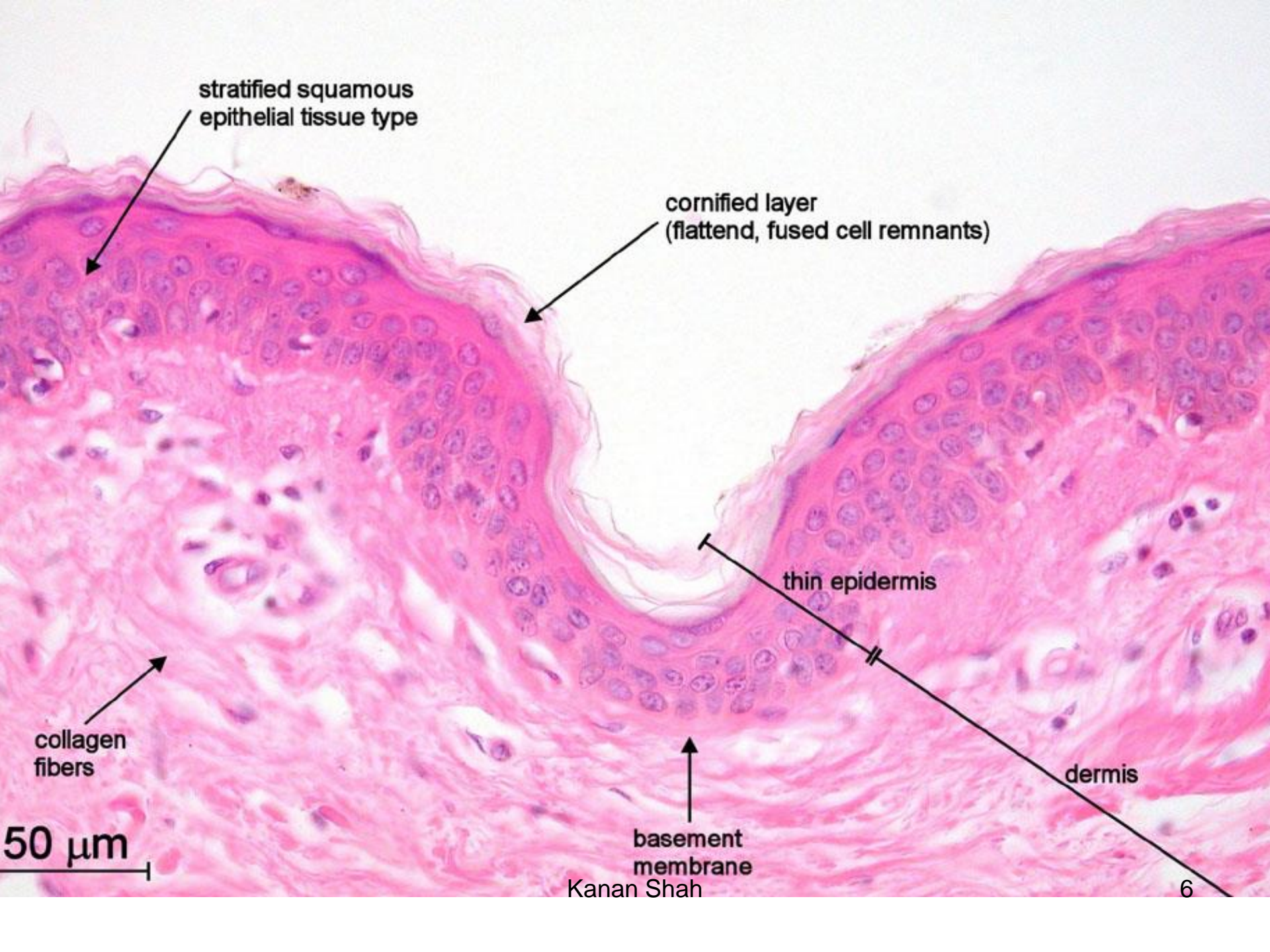
hypodermis

adipose tissue

Kanan Shah







stratified squamous
epithelial tissue type

cornified layer
(flattend, fused cell remnants)

thin epidermis

dermis

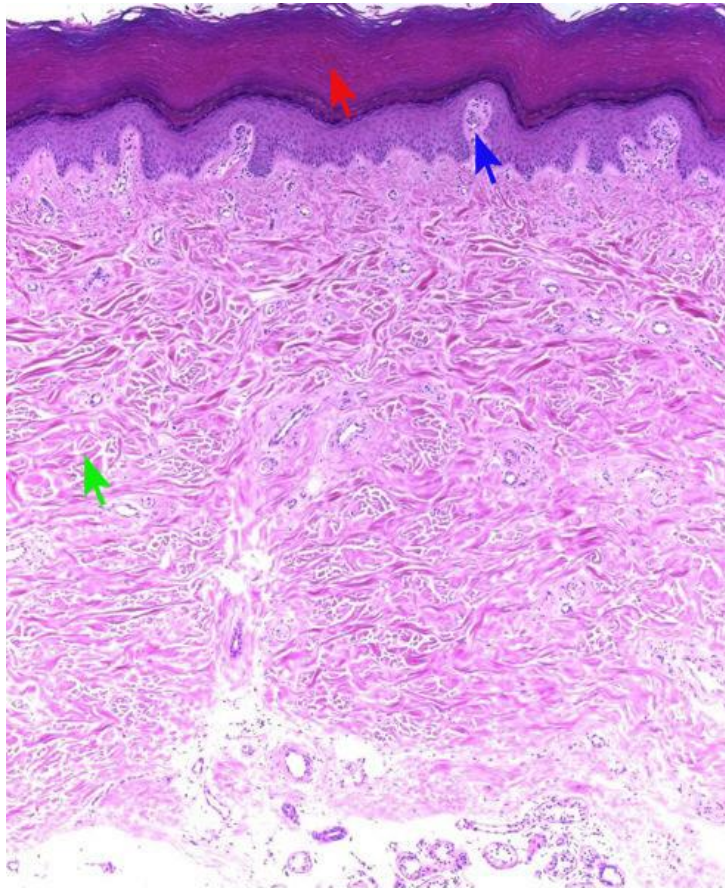
collagen
fibers

basement
membrane

50 μ m

Kanan Shah

6



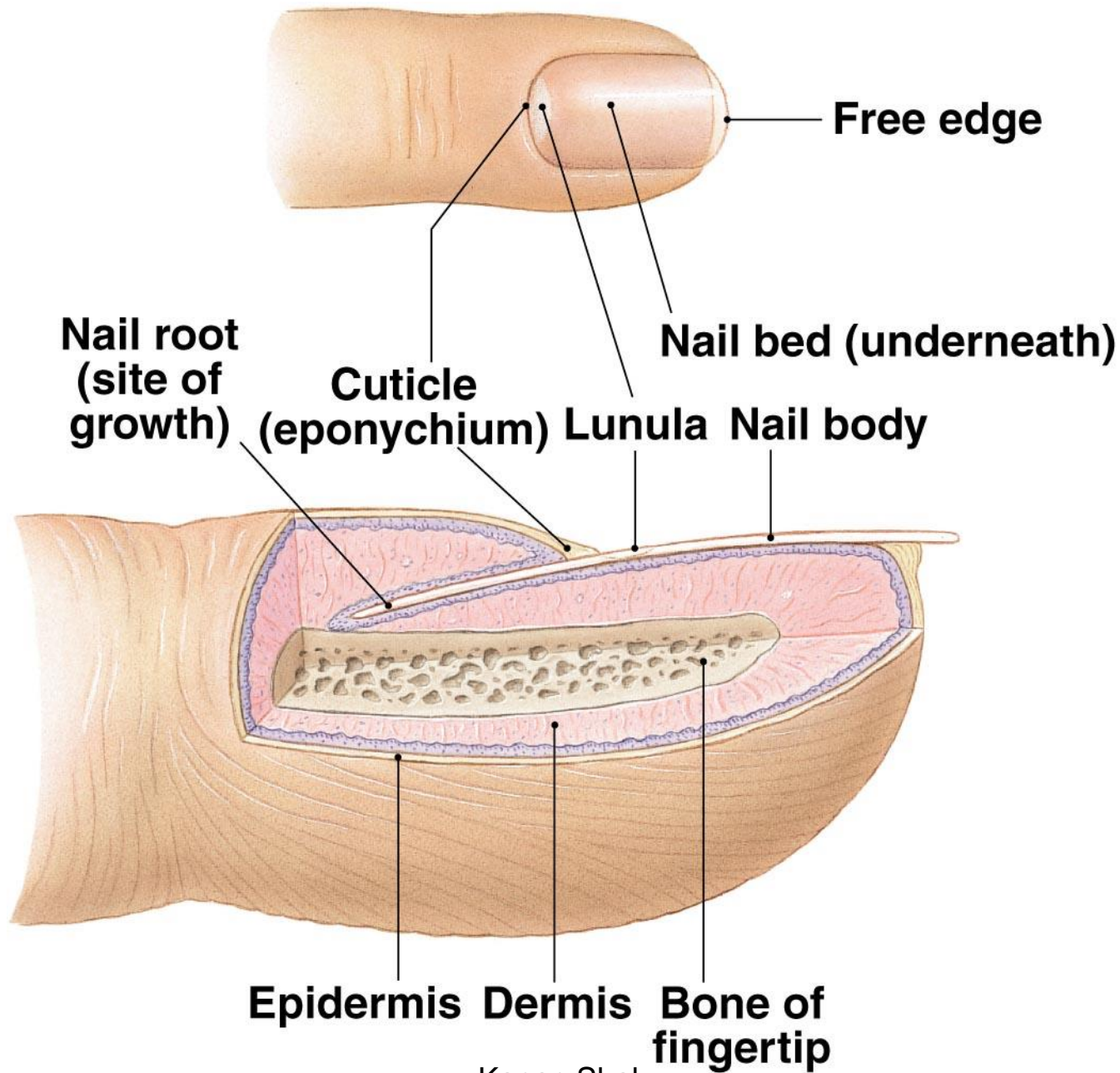
 **Stratum corneum is thick**

 **Papillary dermis**

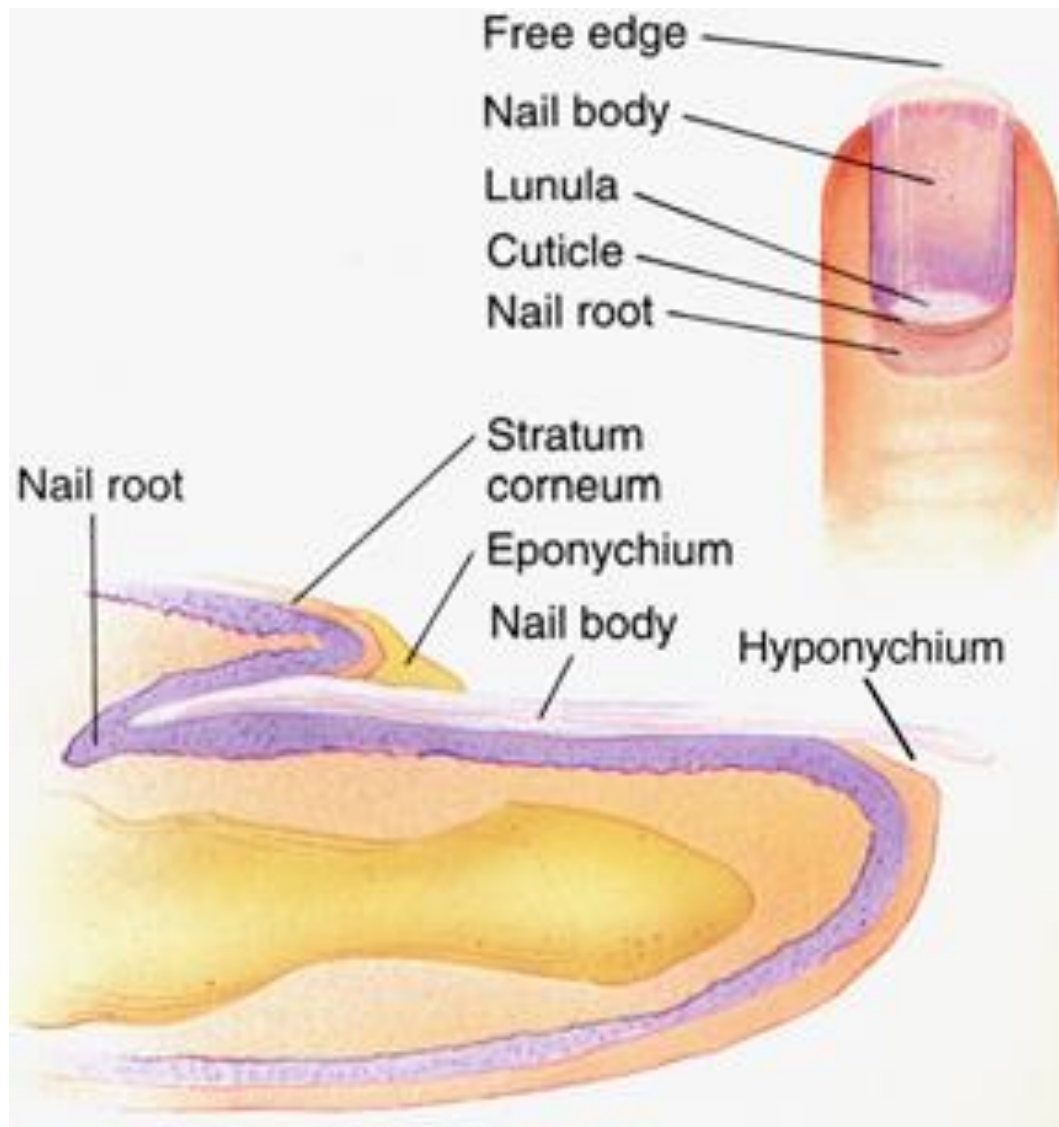
 **Reticular dermis**

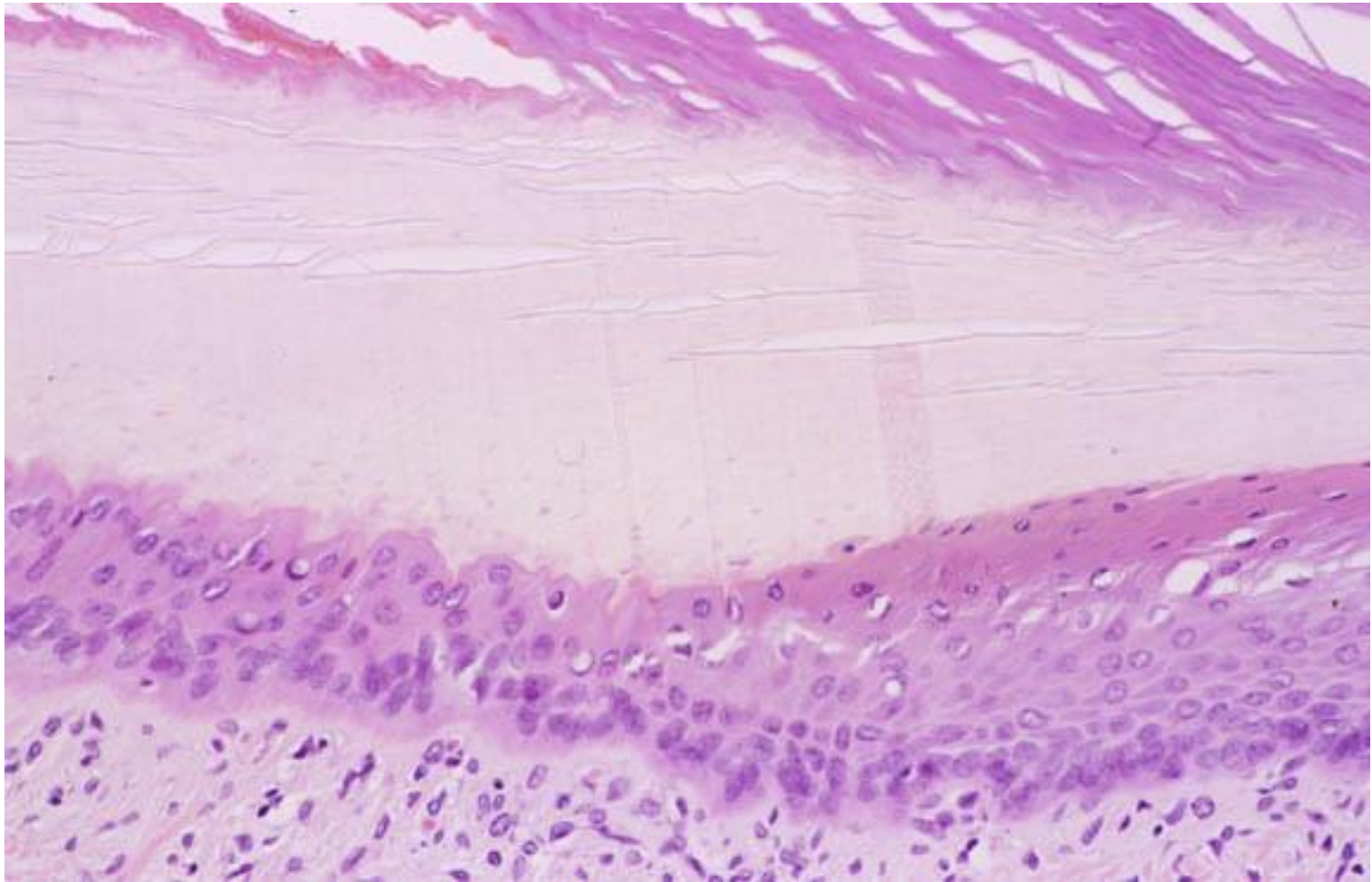
NAILS

- NAIL ROOT
- NAIL BODY
- LUNULE
- EPONYCHIUM
- HYPONYCHIUM
- NAIL BED
- MATRIX



Kanan Shah







Aknowledgement

- Inderbir Singh's Textbook of Human Histology
- Textbook of Histology- Atlas and Practical Guide by JP Gunasegaran
- Difiore's Atlas of Histology
- Images from Google
- Histology Text & Atlas -Brijeshkumar