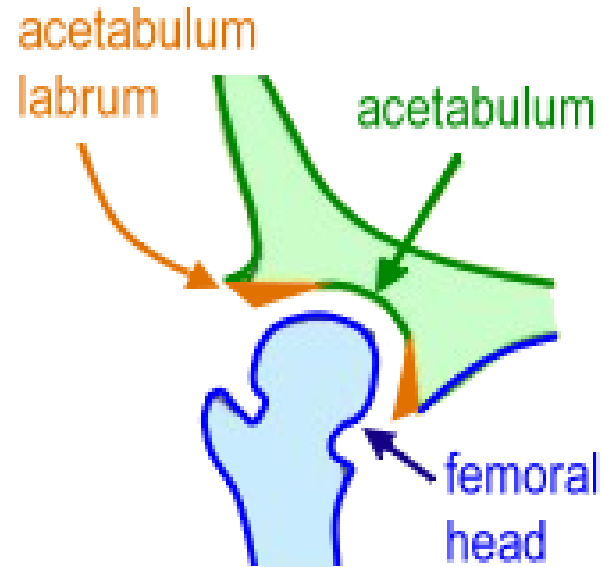


HIP JOINT

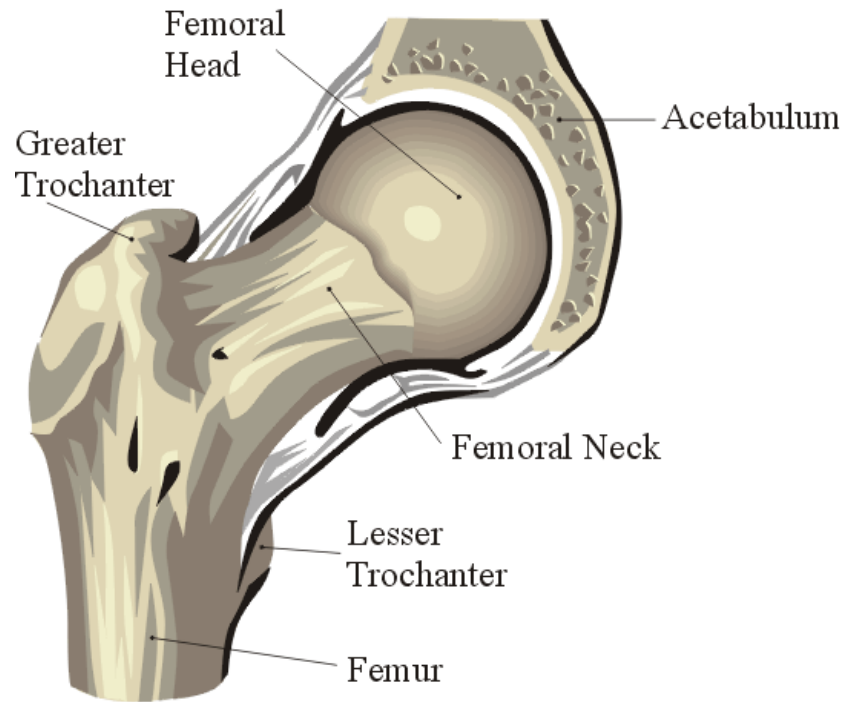


Hip Joint, Anterior View

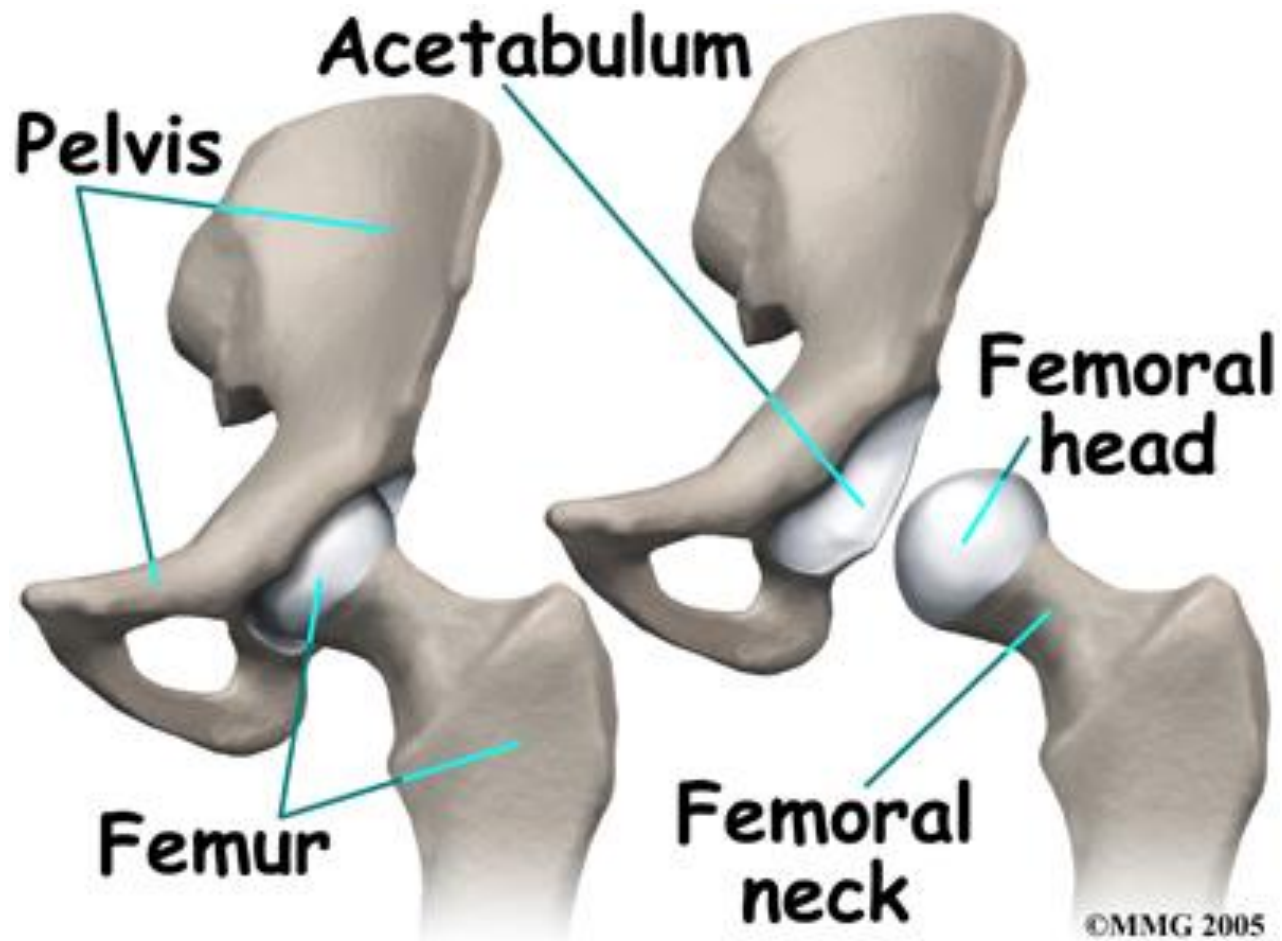
**BALL AND SOCKET TYPE OF
MULTIAXIAL SYNOVIAL JOINT**

ARTICULATING SURFACES

Anterior Femur

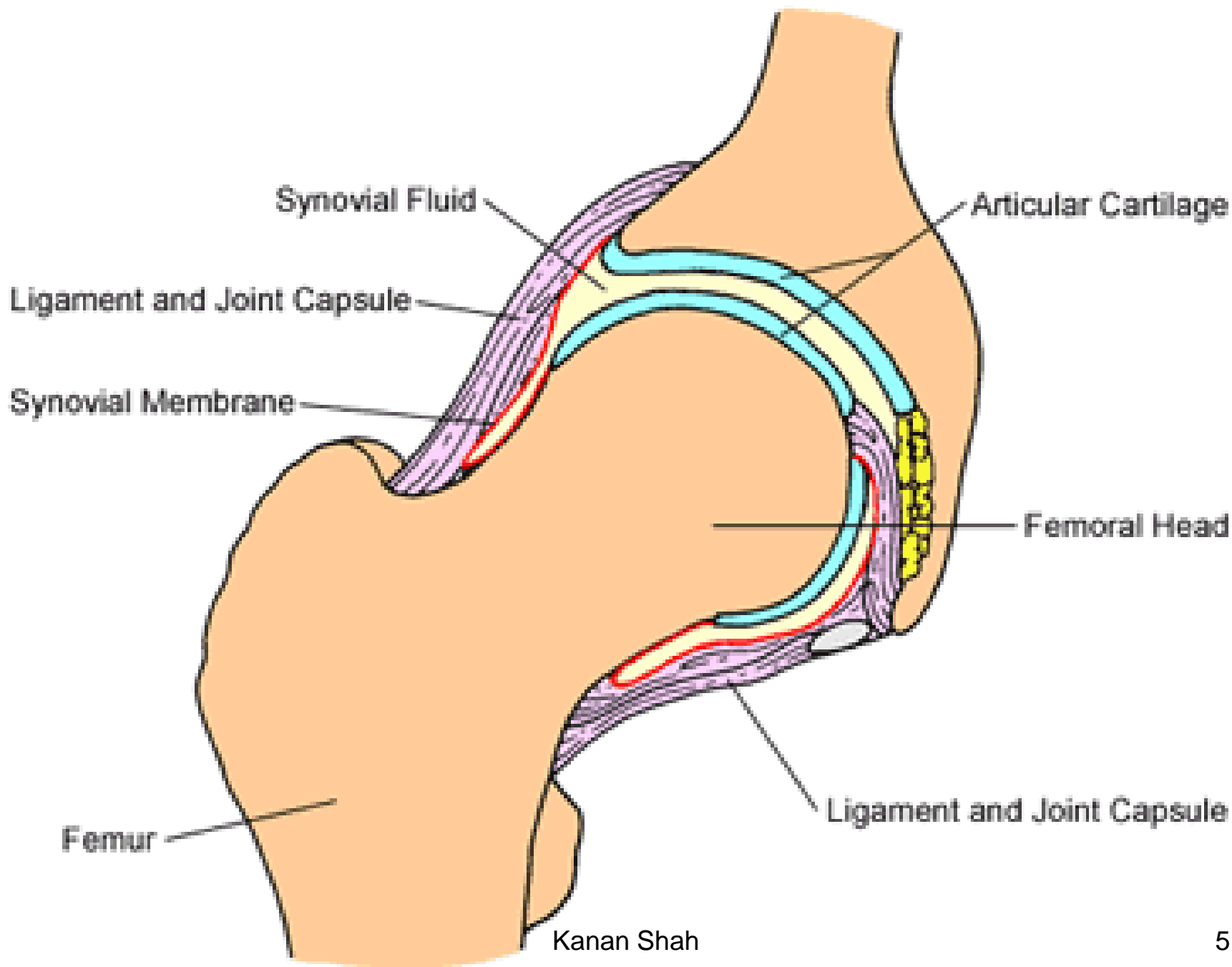


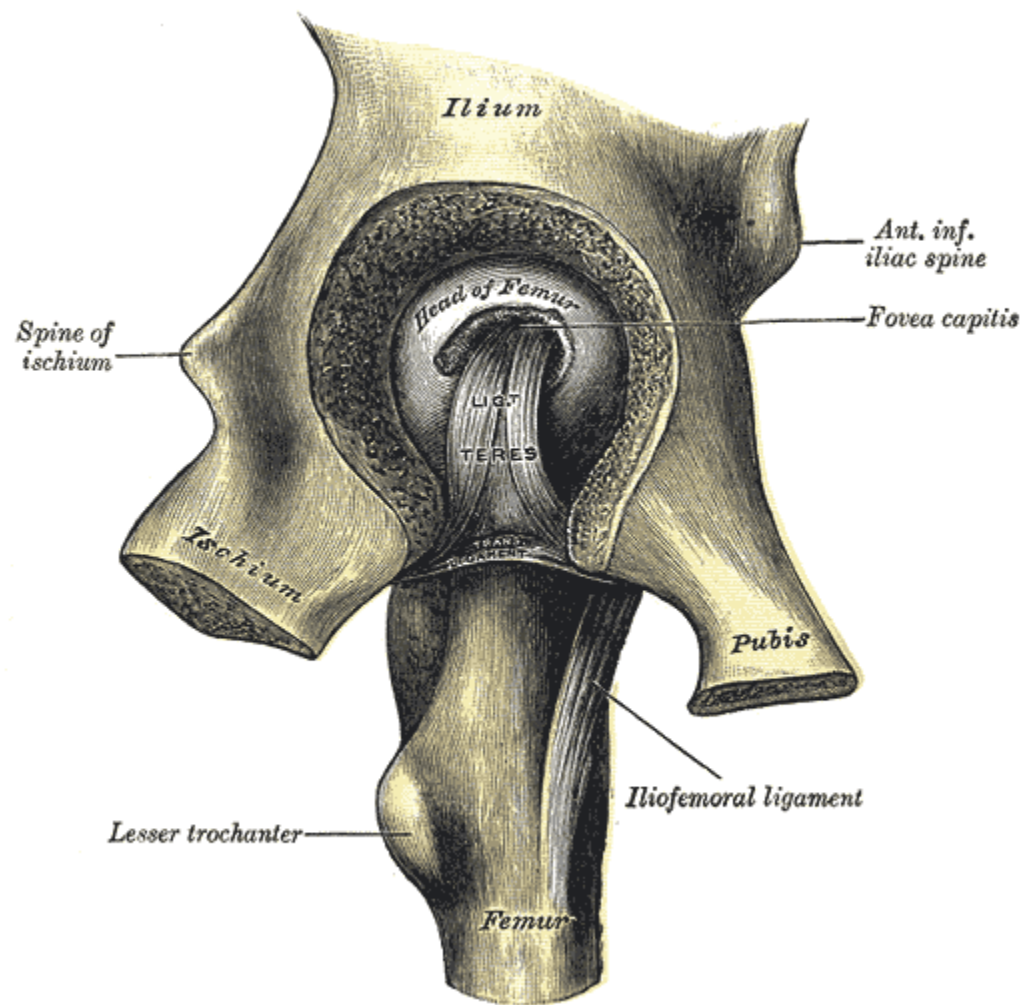
Adapted from Corel Draw 9 Library

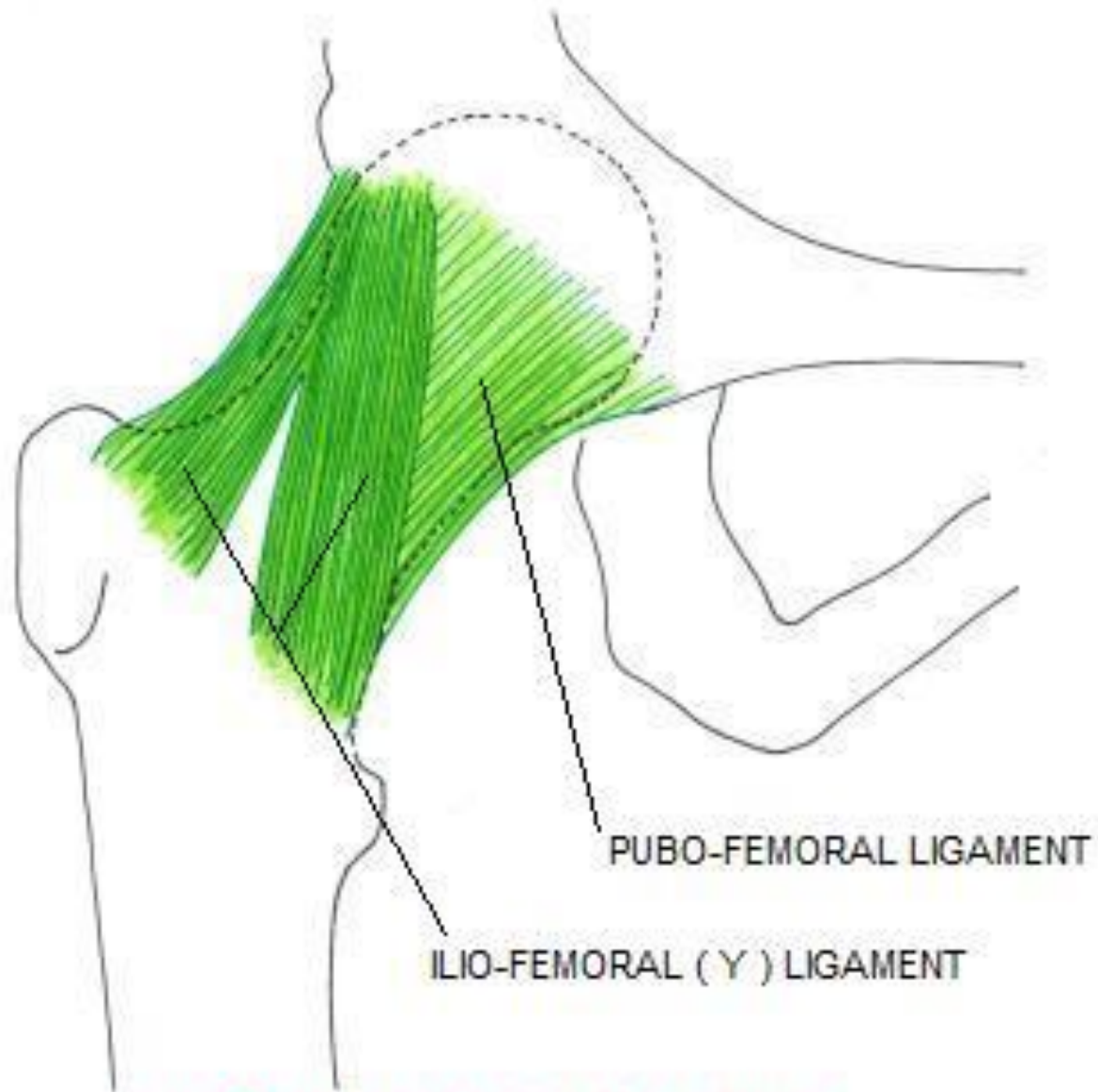


LIGAMENTS

- CAPSULAR LIGAMENT
- SYNOVIAL MEMBRANE
- ACETABULAR LABRUM
- TRANSVERSE ACETABULAR LIGAMENT
- LIGAMENT OF THE HEAD OF FEMUR
- ILIOFEMORAL LIGAMENT
- PUBOFEMORAL LIGAMENT
- ISCHIOFEMORAL LIGAMENT

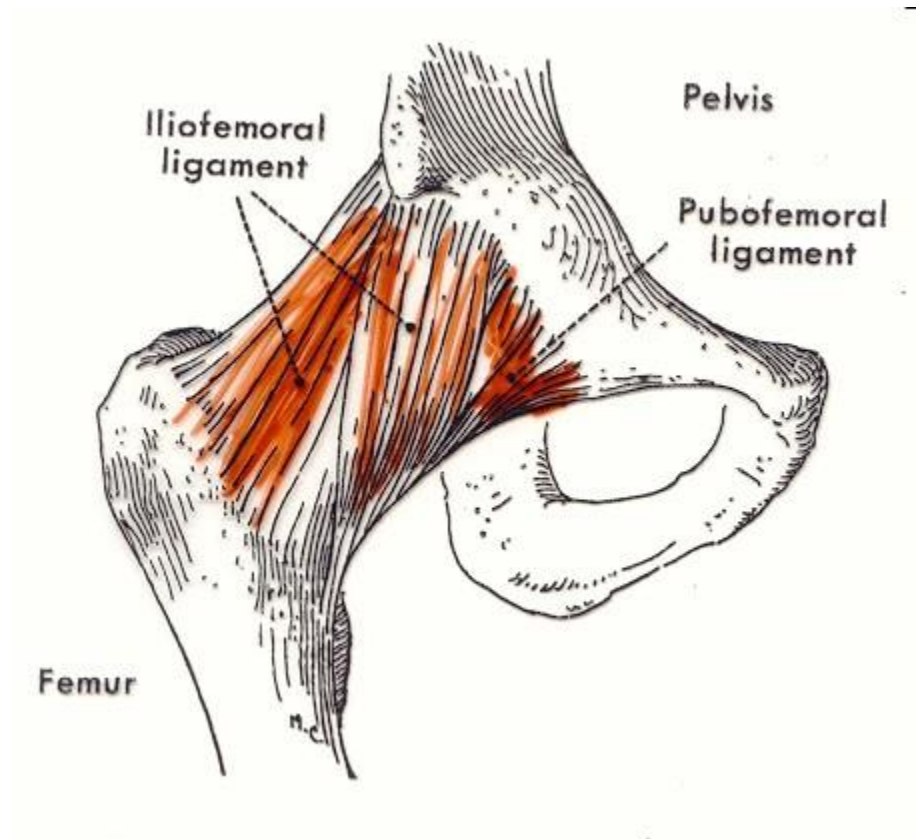






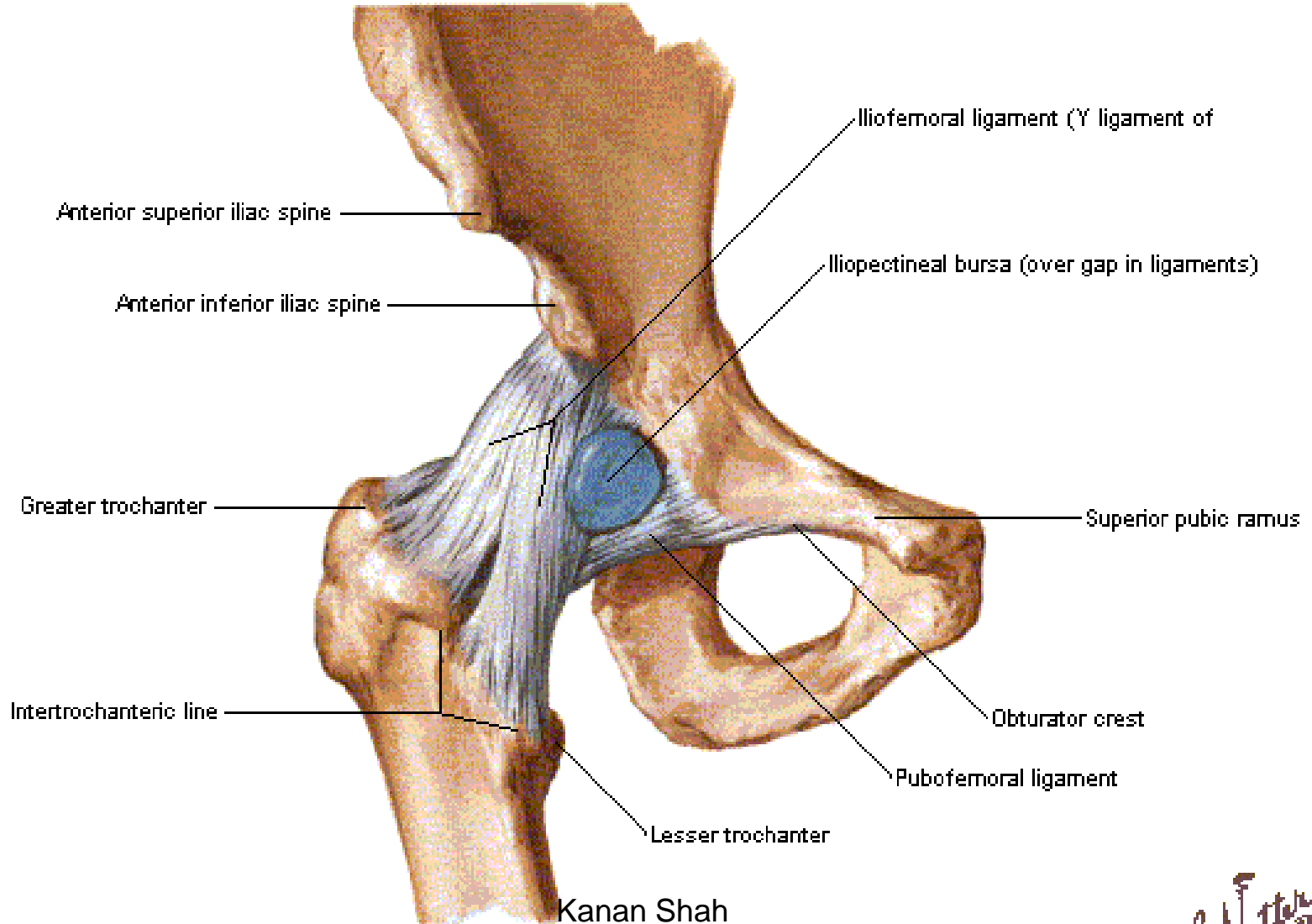
LIGAMENTS OF HIP JOINT

Kanan Shah

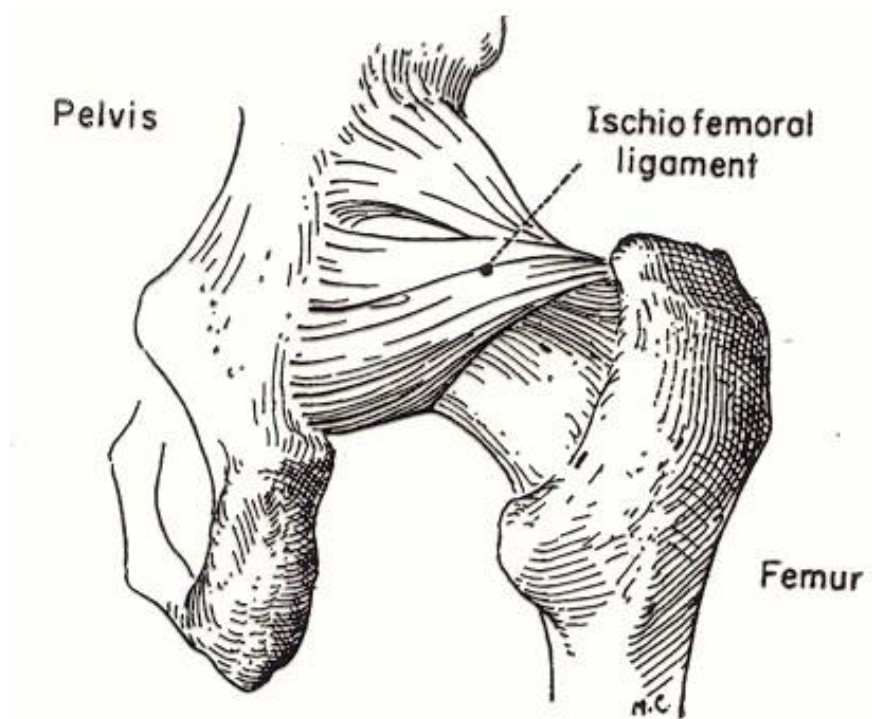


Hip Joint

Anterior View

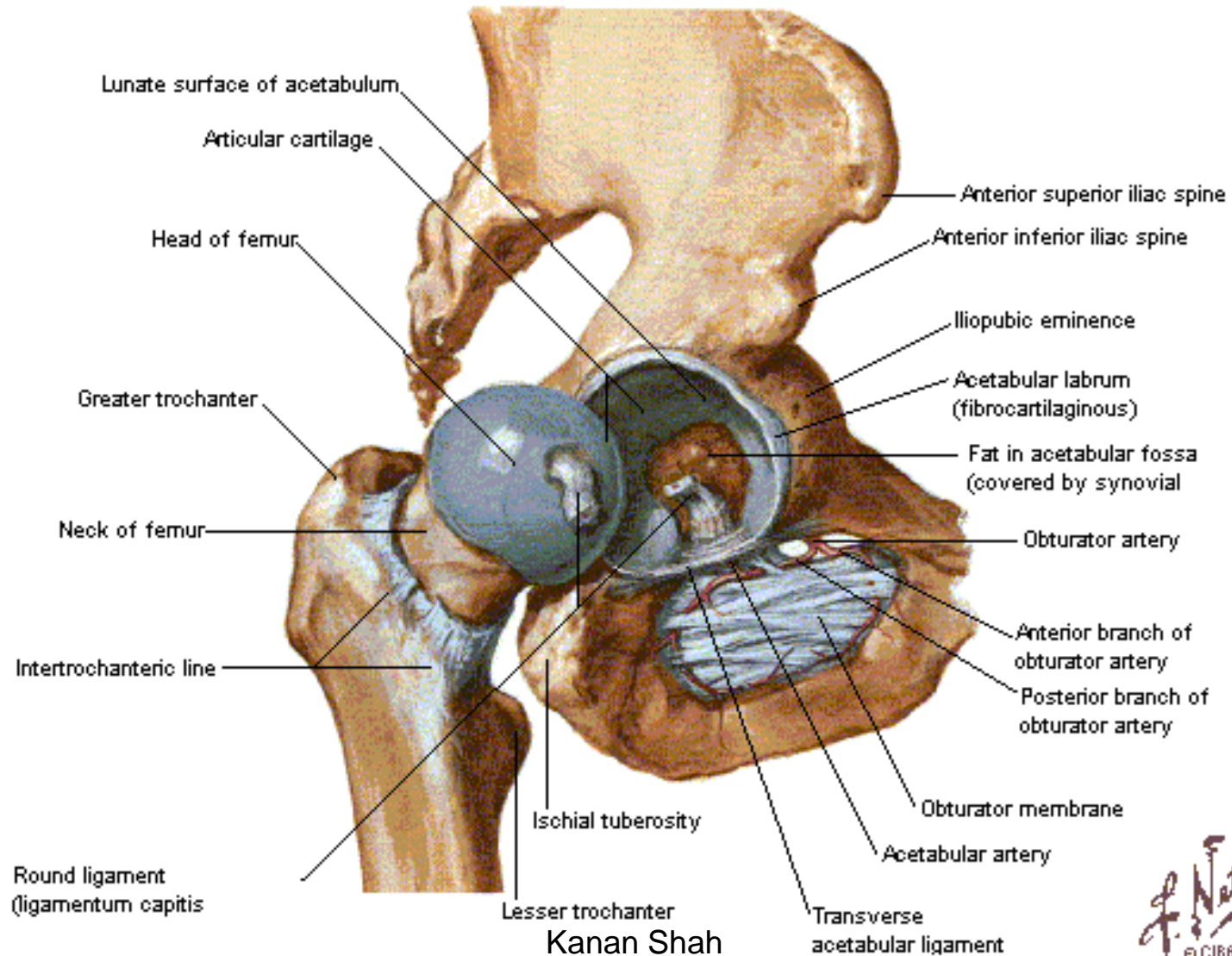


Kanan Shah

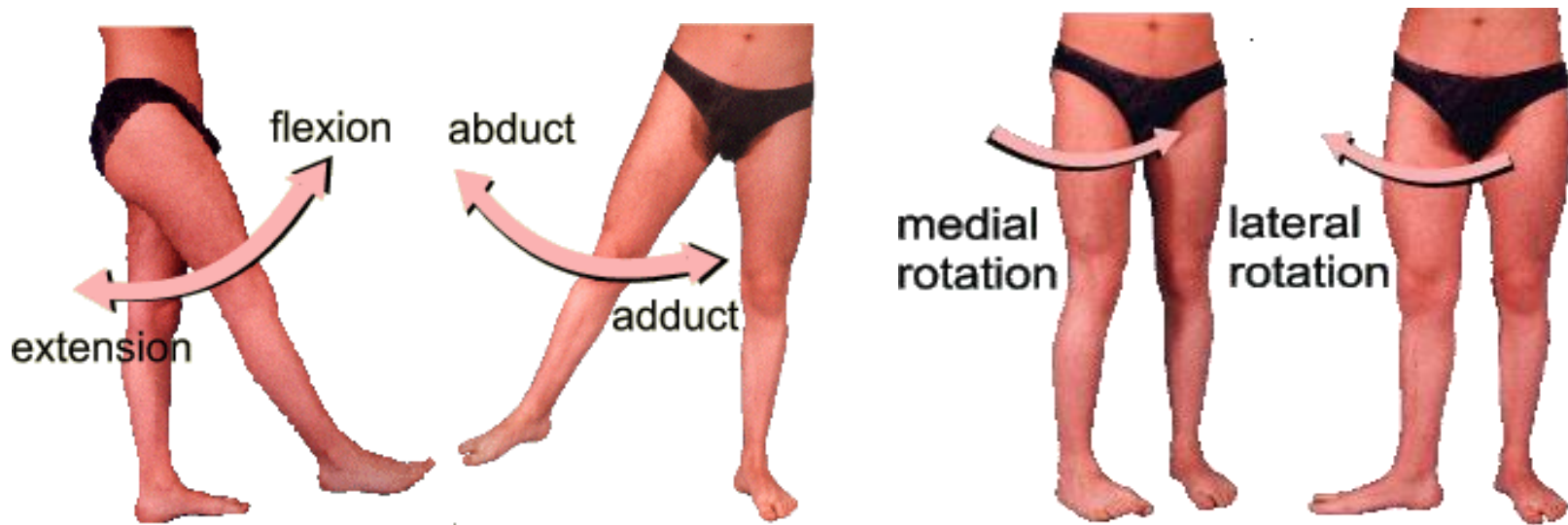


Hip Joint [Opened]

Lateral View



MOVEMENTS AND MECHANISM



External rotators: piriformis, quadratus femoris, Obturator internus and externus, gemellus superior and inferior,

Flexors: iliopsoas, rectus femoris

Adductors: adductor magnus, adductor longus and brevis, pectineus, gracilis

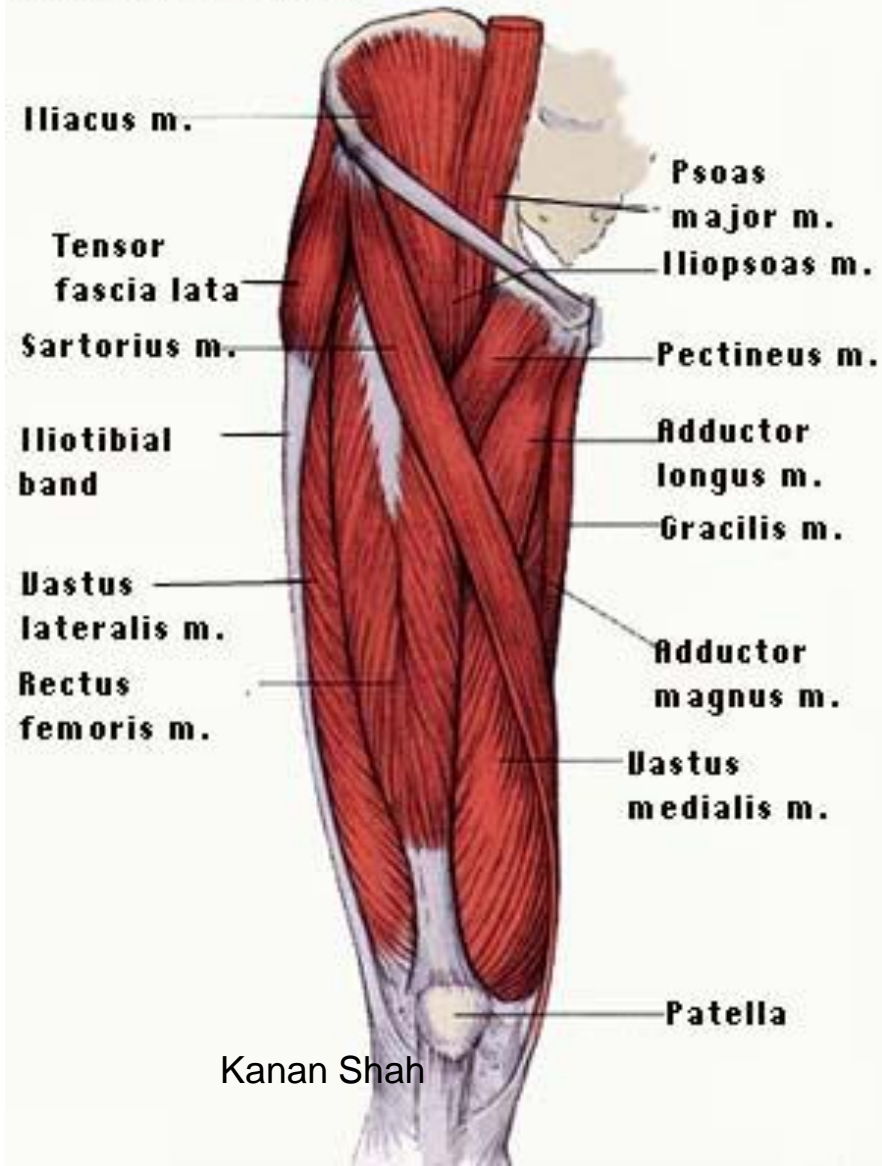
Internal rotators: gluteus medius, gluteus minimus, tensor fascia latae

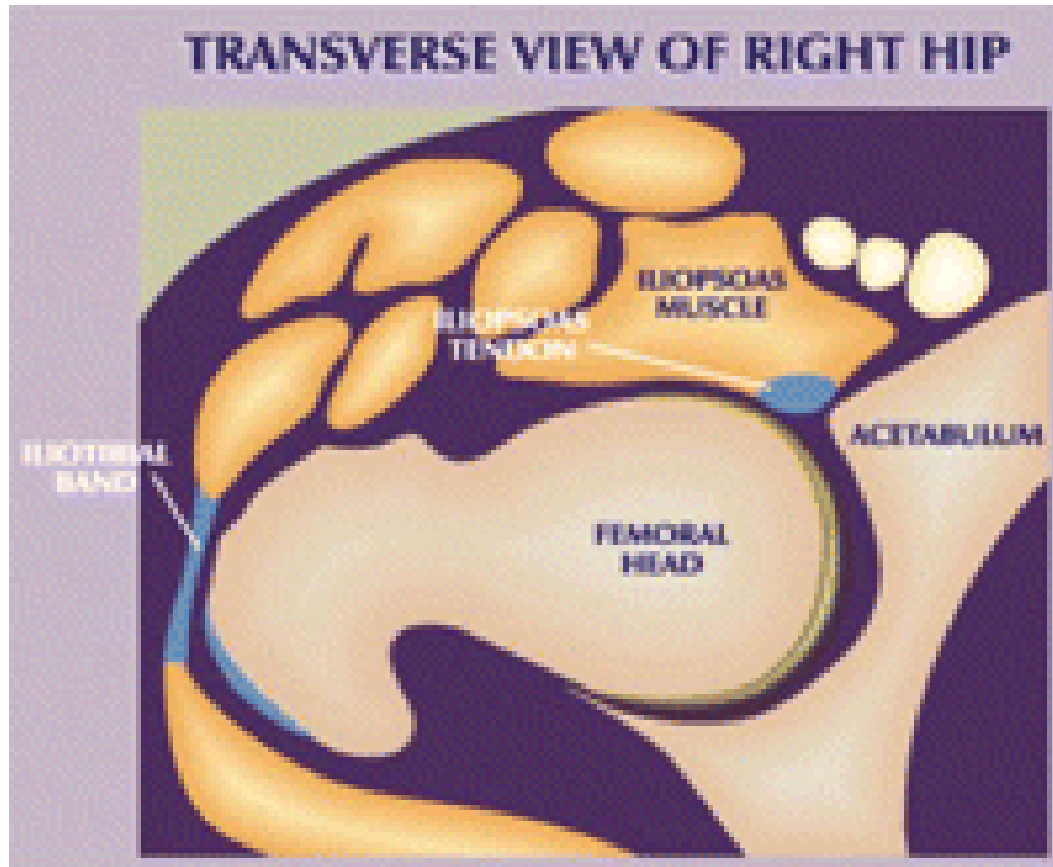
Extensors: semitendinosus and semimembranosus, biceps femoris, gluteus maximus

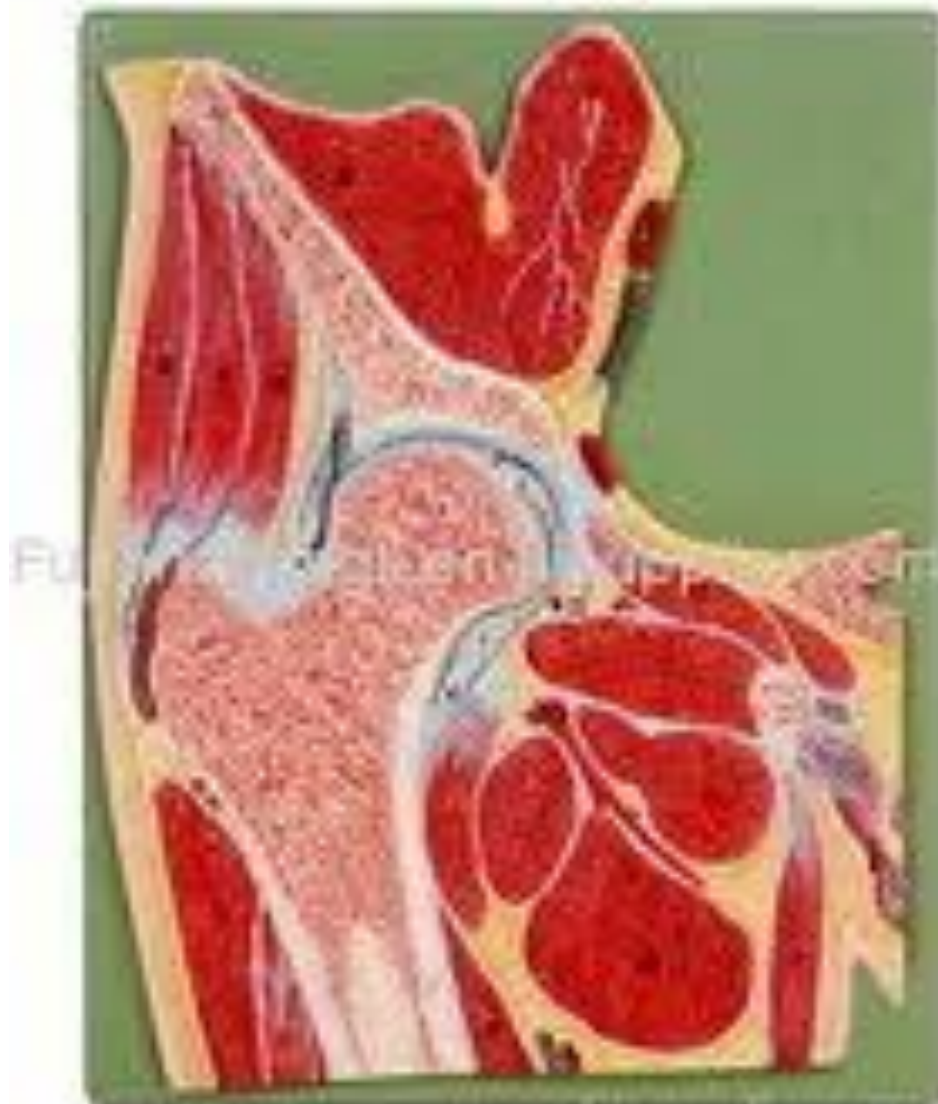
Abductors: gluteus medius, gluteus minimus

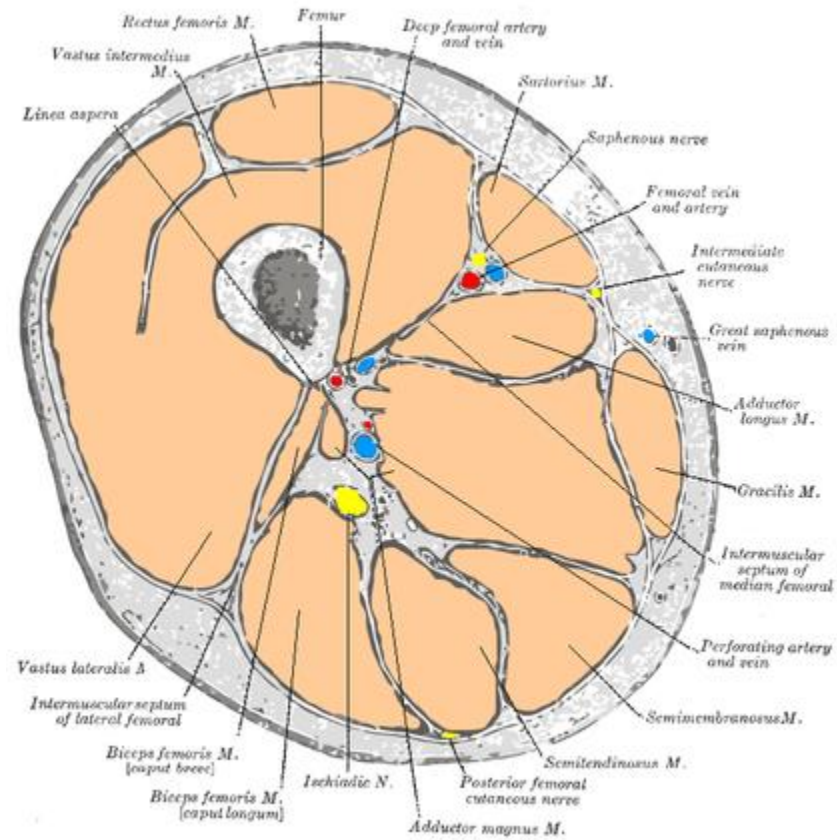
RELATION

Superficial View



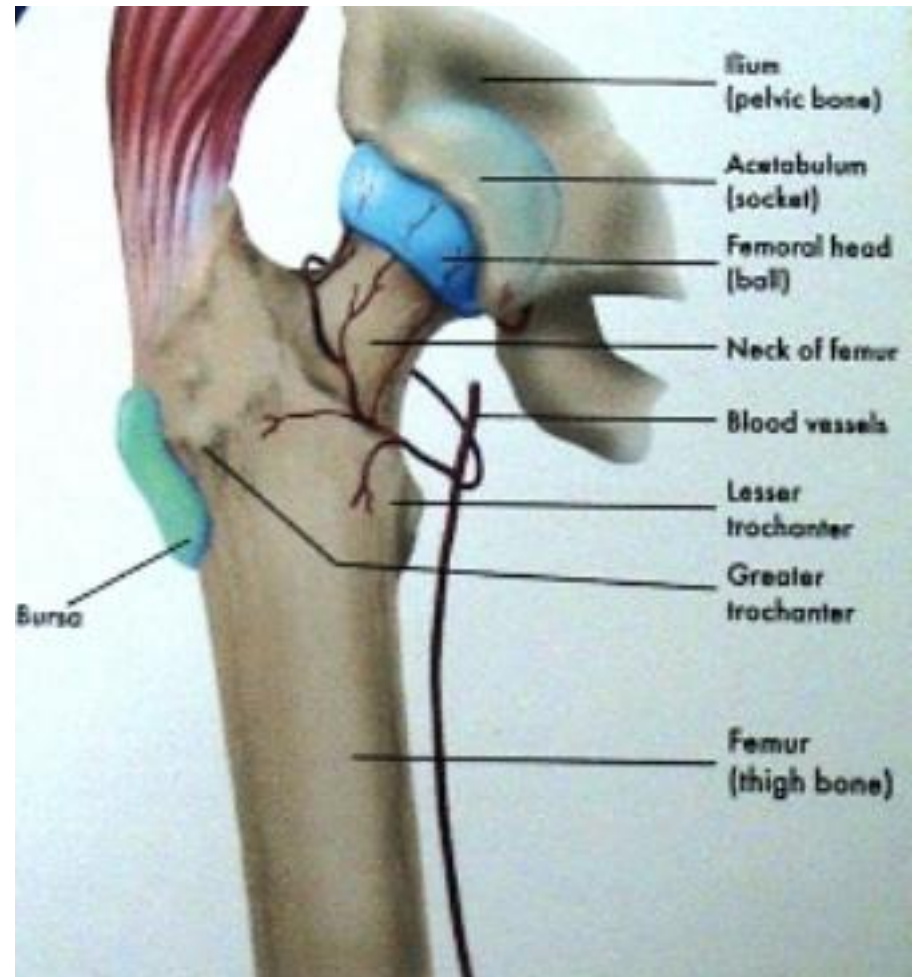


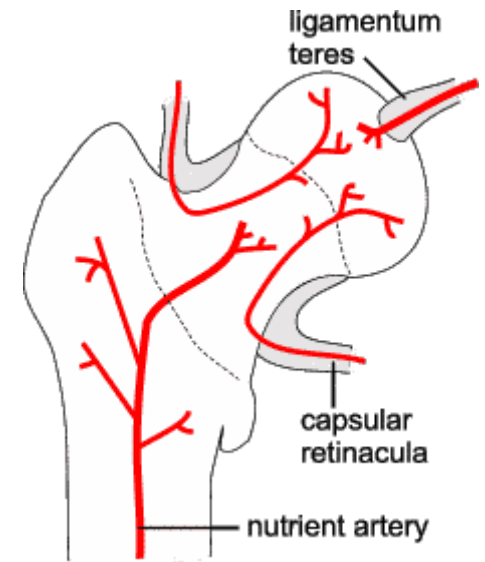




ARTERIAL SUPPLY

- Medial and Lateral circumflex femoral arteries
- Obturator artery
- Superior and Inferior gluteal arteries





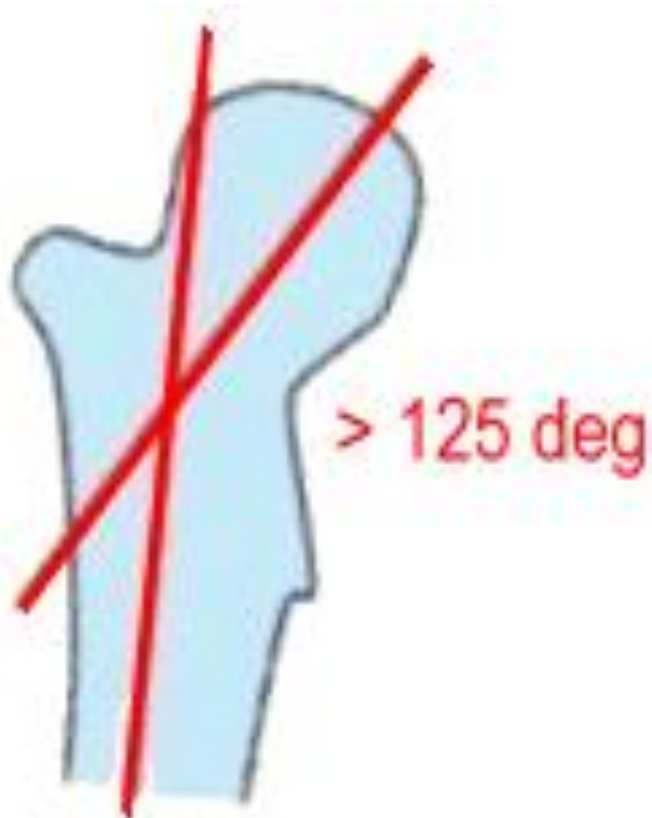


NERVE SUPPLY

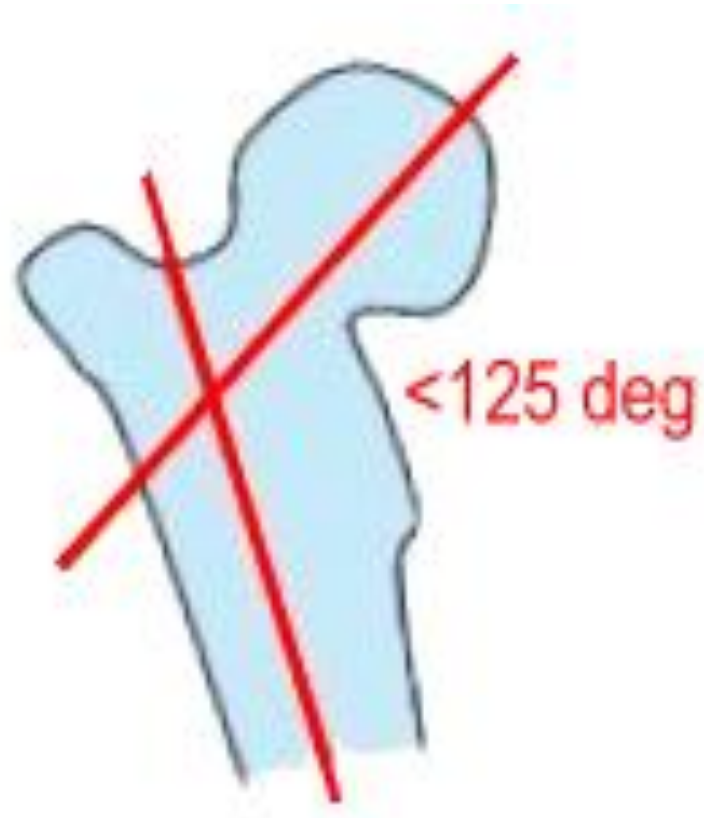
- Femoral nerve
- Ant. Division of obturator nerve
- Nerve to quadratus femoris
occasionally from
- Sciatic nerve
- Superior gluteal nerve

APPLIED ANATOMY

- Below 5 years----Congenital dislocation
Tuberculosis
- 5-10 years----Perthes' diseases
(Pseudocoxalgia)
- 10-20 years----Coxa Vera
- Above 40 years----Osteoarthritis

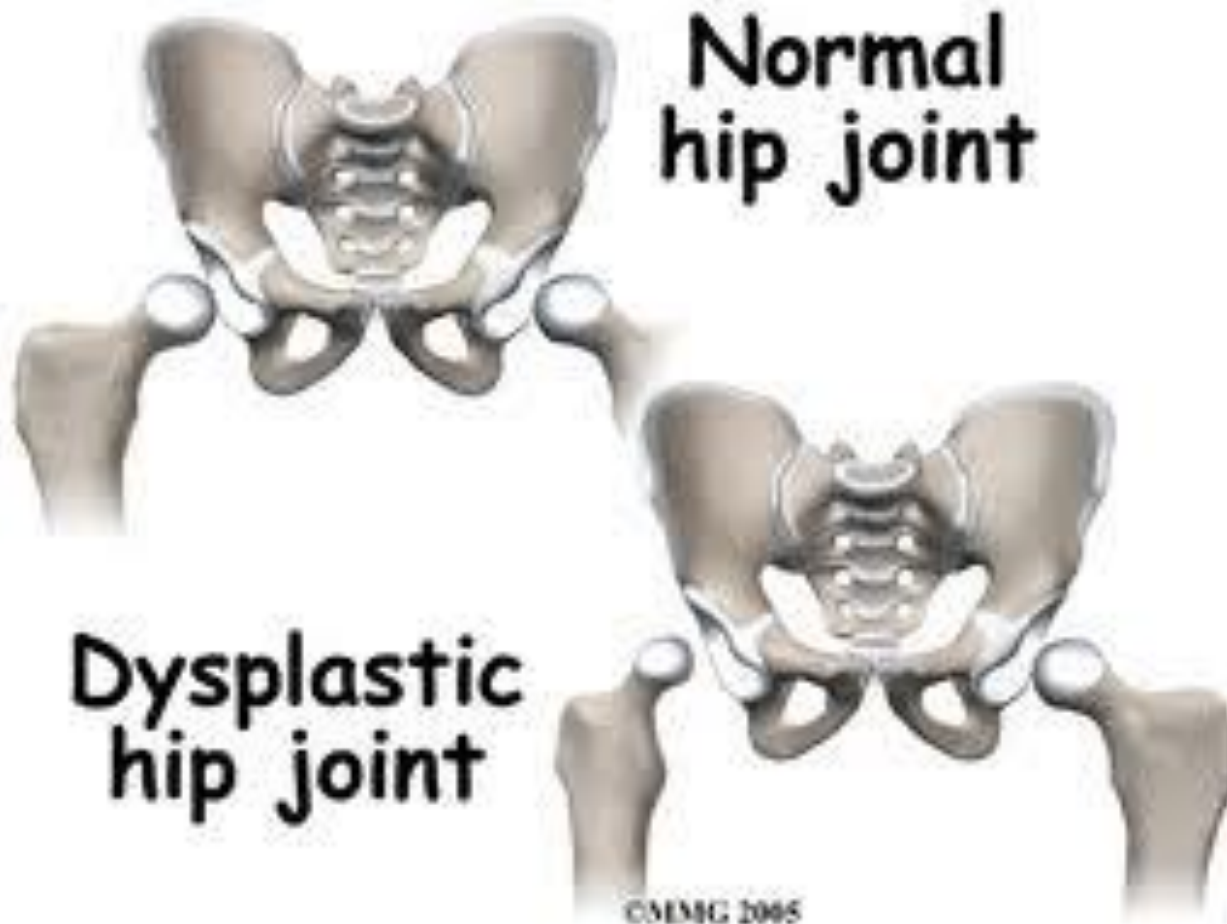


coxa valga



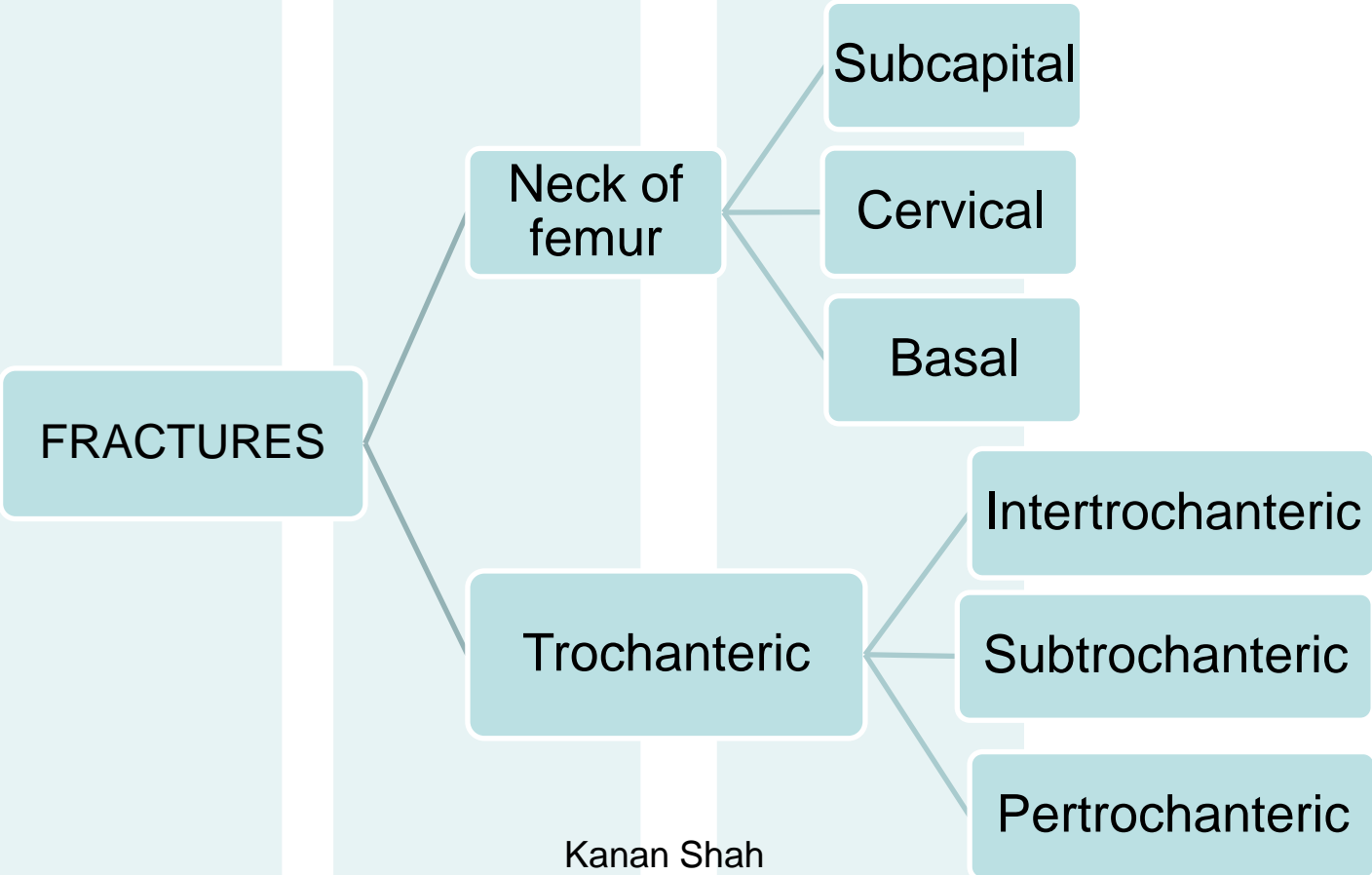
coxa vara

Frontal Plane Deformities of Right Hip



INJURIES

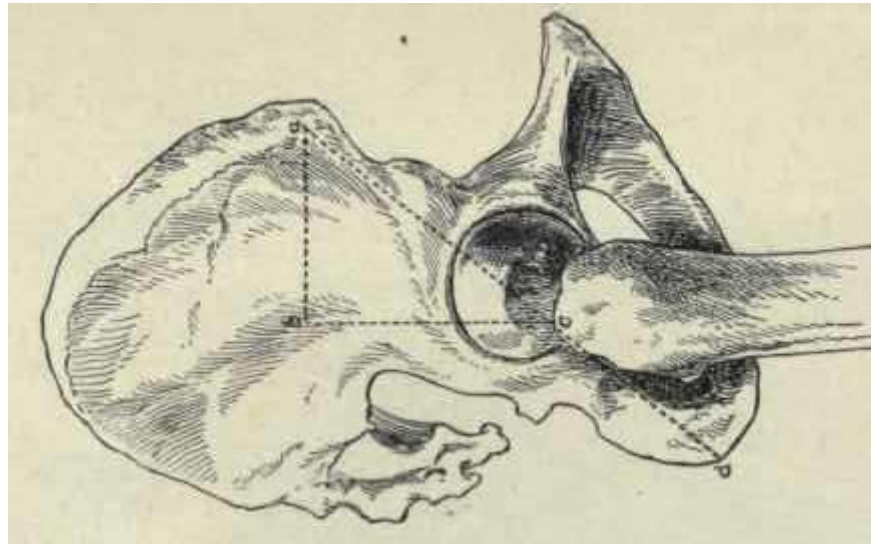
- Young age: Greenstick fractures of neck
Displacement of head
- Adulthood: Dislocation of hip joint
- Old age: Fracture of neck femur



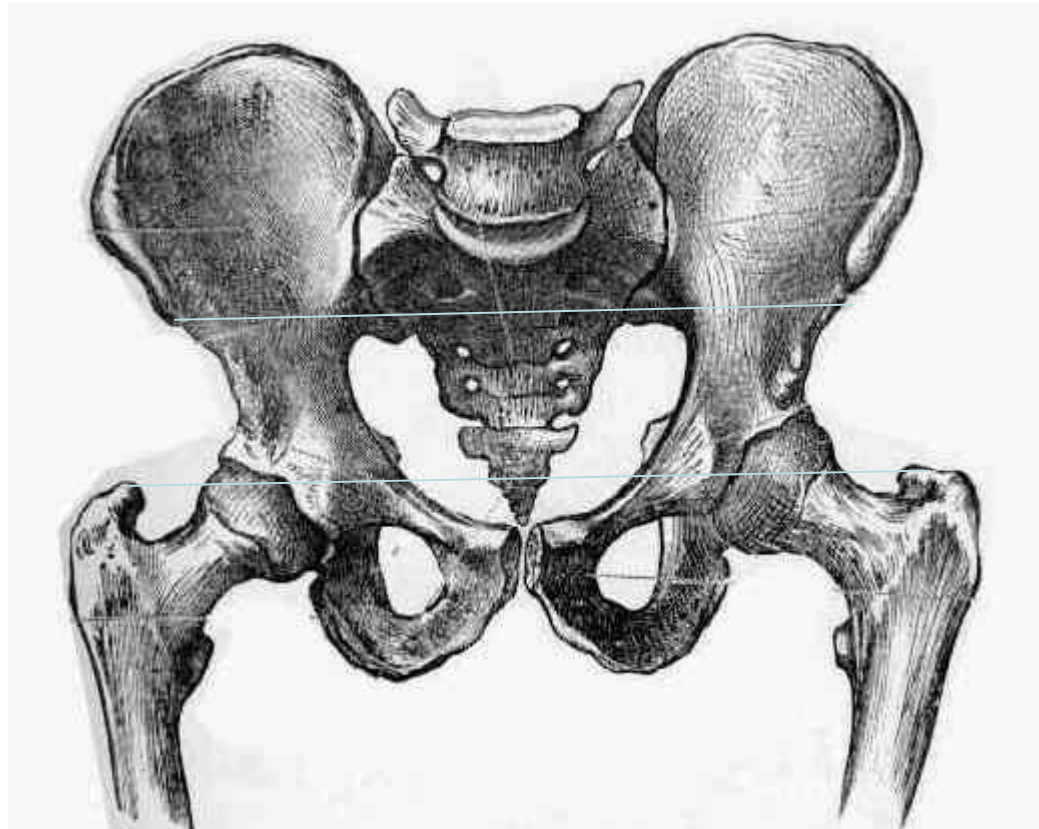
NELATON'S LINE



BRYANT'S TRIANGLE



CHIENE'S TEST



SHENTON'S LINE

The University of Liverpool



SCHOEMAKER'S LINE



Aknowledgements

- Human Anatomy by BD Chaurasia
- Gray's Anatomy
- Essentials of Human Antomy: Upper Limb and Lower Limb by Asimkumar Dutta