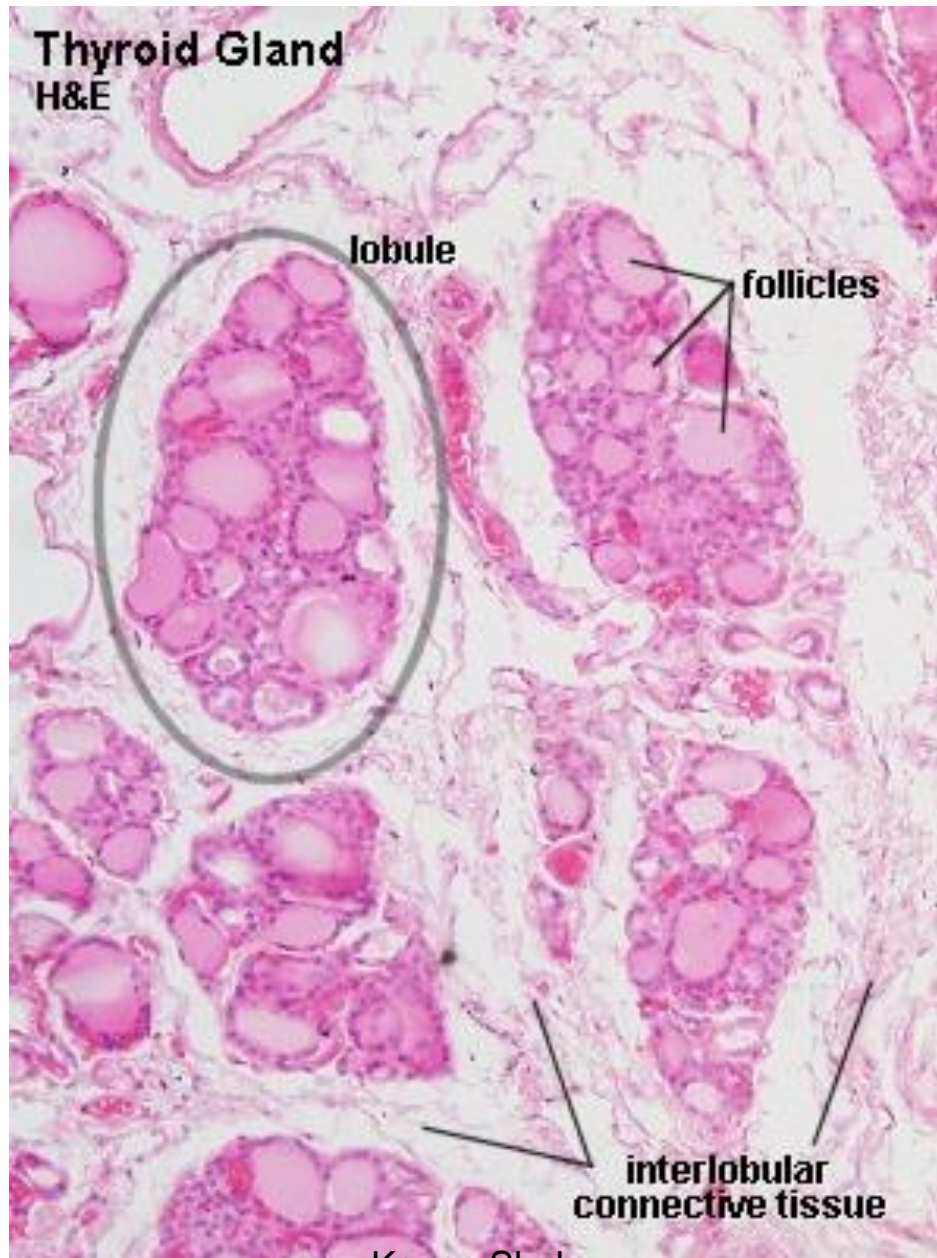


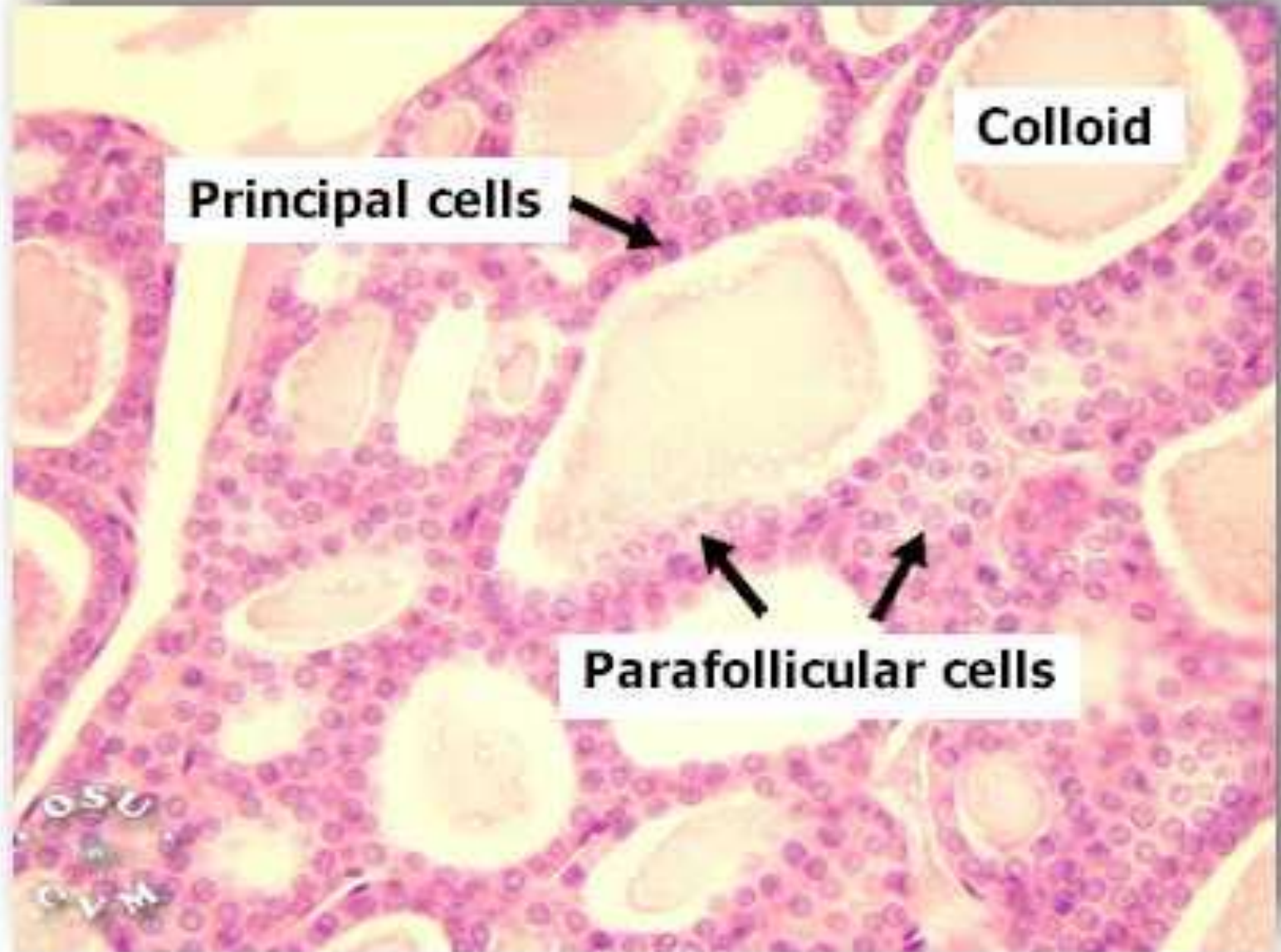
ENDOCRINE SYSTEM

THYROID GLAND , PARATHYROID
GLAND, PITUTARY GLAND,
SUPRARENAL GLAND

THYROID GLAND

- TRUE CAPSULE -- SEPTA – LOBULES – FOLLICLES
FOLLICULAR CELLS PARAFOLLICULAR CELLS
INCONSPICUOUS BASEMENT MEMBRANE





PITUTARY GLAND

CAPSULE

TWO PARTS DIFFERS DEVELOPMENTALLY ,
STRUCTURALLY , FUNCTIONALLY

ADENOHYPOPHYSIS NEUROHYPOPHYSIS

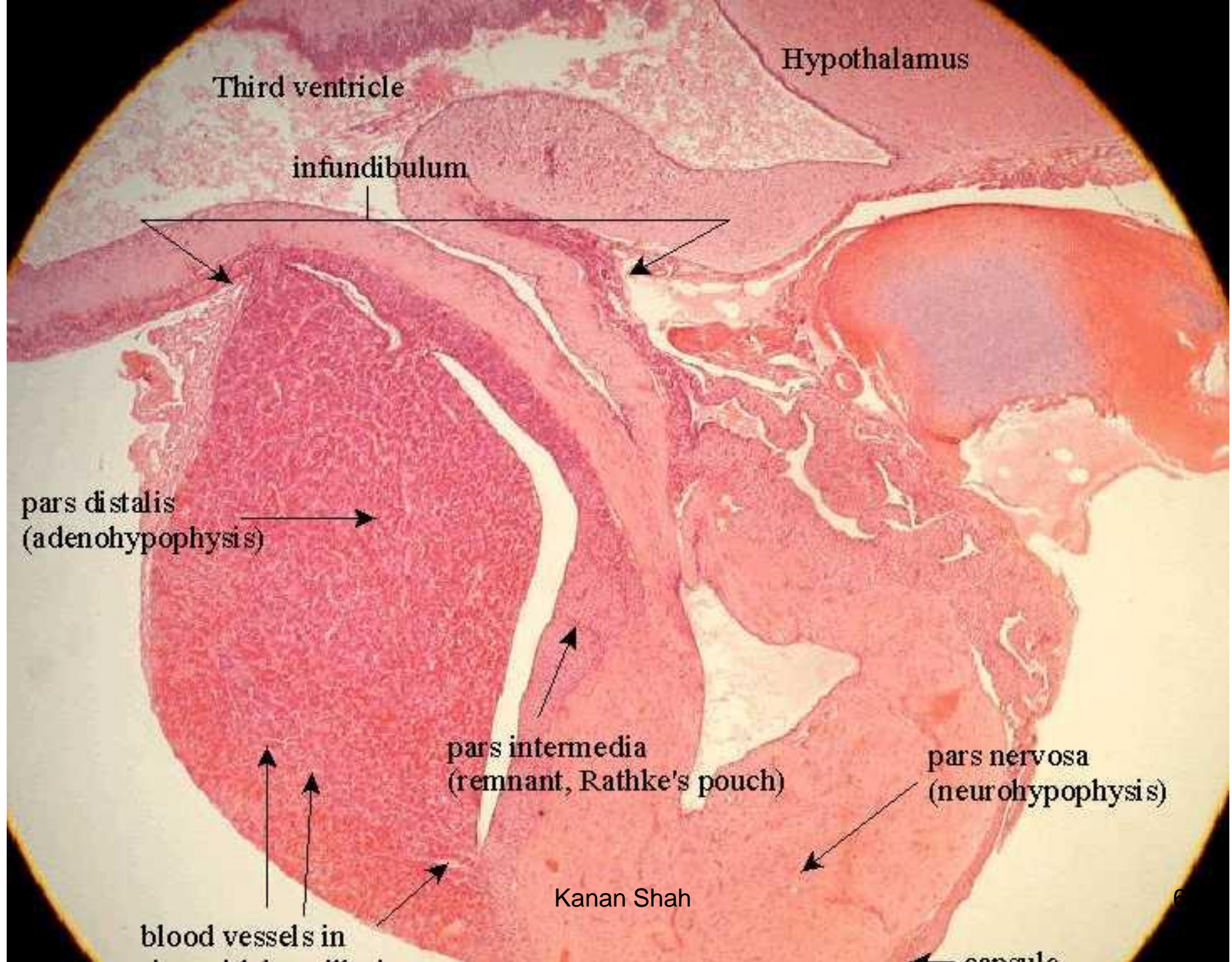
ADENOHYPOPHYSIS – PARS DISTALIS , PARS
TUBERALIS , PARS INTERMEDIA

PARS DISTALIS : IRREGULAR CORDS OF GLANDULAR
CELLS.SUPPORTED BY RETICULAR FIBERS,
BETWEEN CORDS SINUSOIDS ARE THERE.

CHROMOPHOBE CELLS

CHROMOPHIL CELLS – ACIDOPHIL CELLS

CHROMOPHIL CELLS – BASOPHIL CELLS



Hypothalamus

Third ventricle

infundibulum

pars distalis
(adenohypophysis)

pars intermedia
(remnant, Rathke's pouch)

pars nervosa
(neurohypophysis)

Kanan Shah

blood vessels in

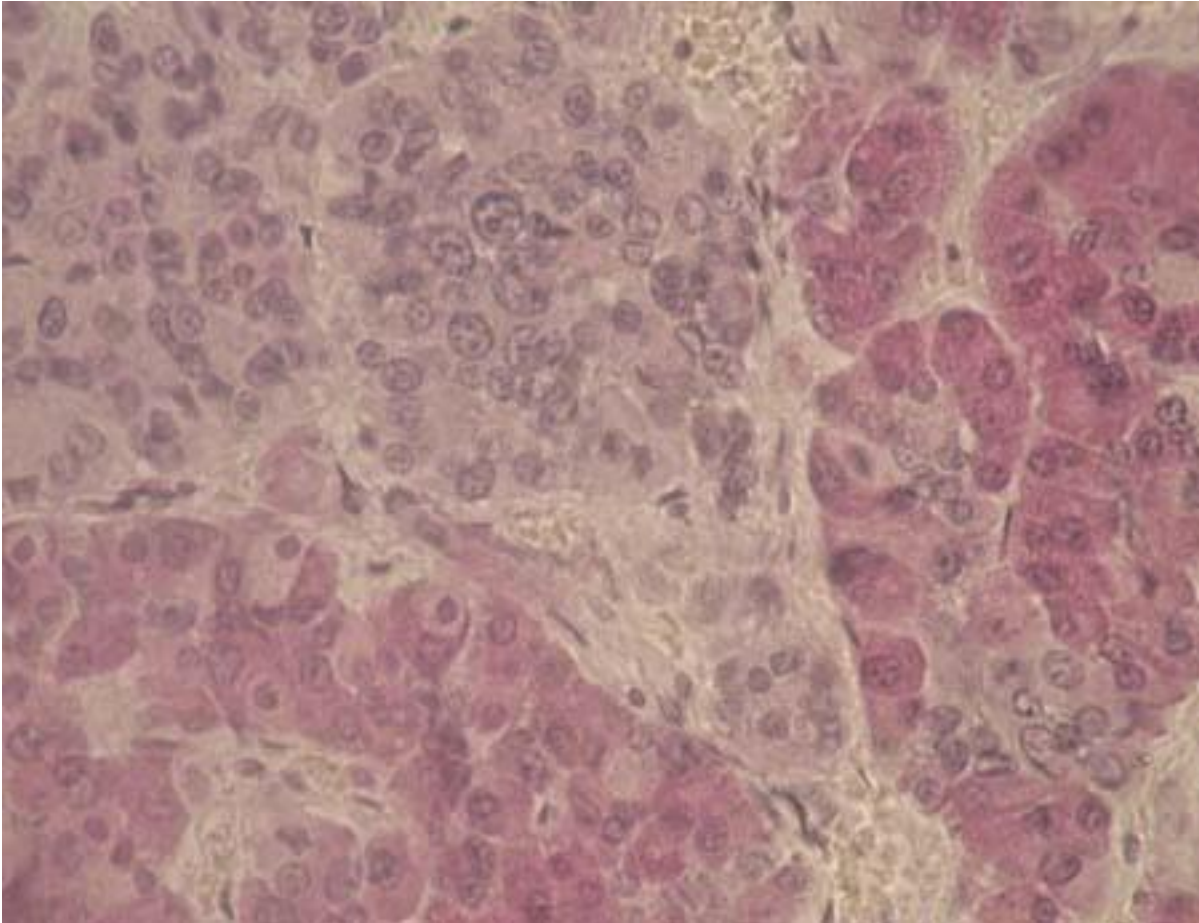
capsule

PARS TUBERALIS

- CELLS ARE CUBOIDAL, CYTOPLASM IS UNIFORM GRANULES NOT PRESENT , MILDLY BASOPHILIC FAIRLY VASCULAR , FUNCTION NOT KNOWN.

PARS INTERMEDIA

- IRREGULAR ROWS OF FOLLICLES CONTAINING PALE STAINING COLOID MATERIAL.
- FEW ROWS OF MODERATELY SIZED CELLS WITH BASOPHILIC GRANULES IN CYTOPLASM.
- SECRETES MSH



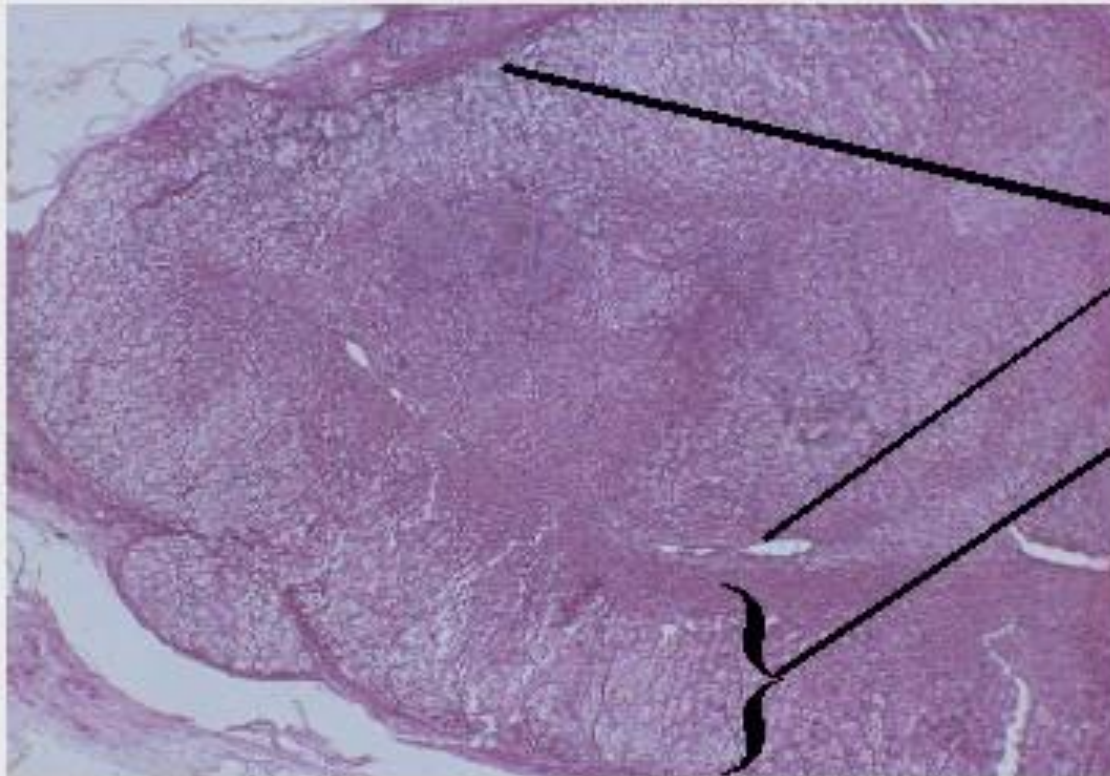
PARS NERVOSA

- NERVE FIBERS , PITUICYTES (NEUROGLIAL CELLS)
- HERRING BRAUER BODIES – BODIES OF HYLINE MATERIAL , NEUROSECRETORY MATERIALS STORED IN NERVE TERMINALS. SECRETS ADH & OXYTOCIN.

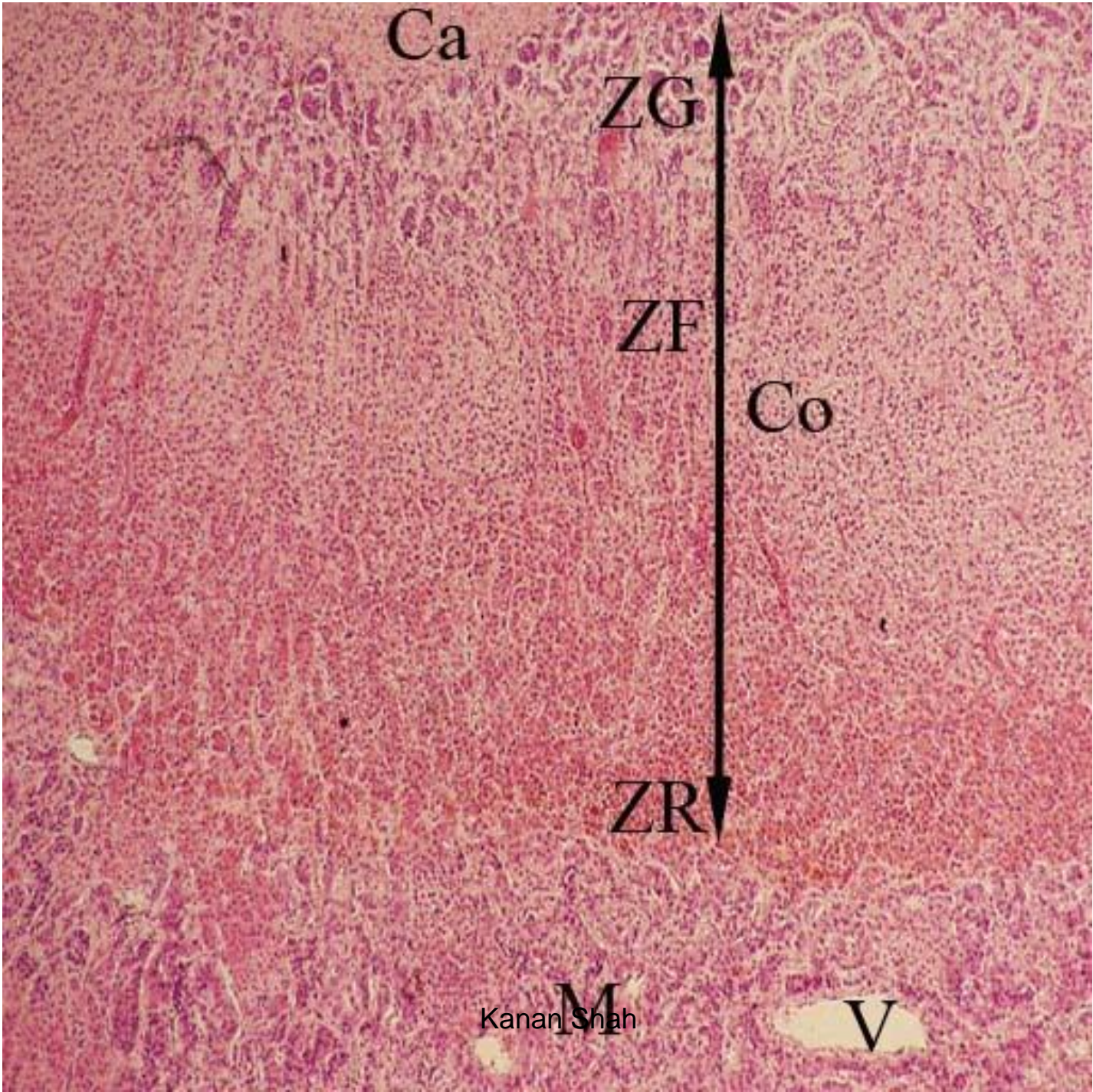
SUPRA RENAL GLAND

- CAPSULE – OUTER CORTEX – INNER MEDULLA
- CORTEX – ZONA GLOMERULARIS
 - ZONA FASCICULATA
 - ZONA RETICULARIS
- MEDULLA -- PHEOCHROMOCYTES

The Adrenal Gland



The adrenal gland consists of a medulla which secretes epinephrine and the cortex which secretes the corticosteroids.



Aknowledgement

- Inderbir Singh's Textbook of Human Histology
- Textbook of Histology- Atlas and Practical Guide by JP Gunasegaran
- Difiore's Atlas of Histology
- Images from Google
- Histology Text & Atlas -Brijeshkumar