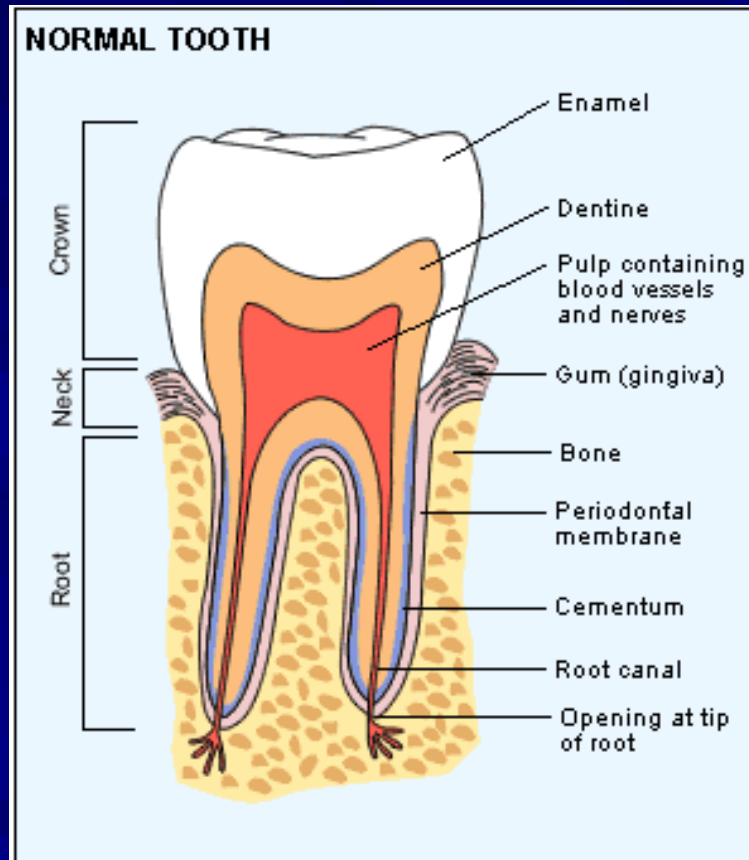
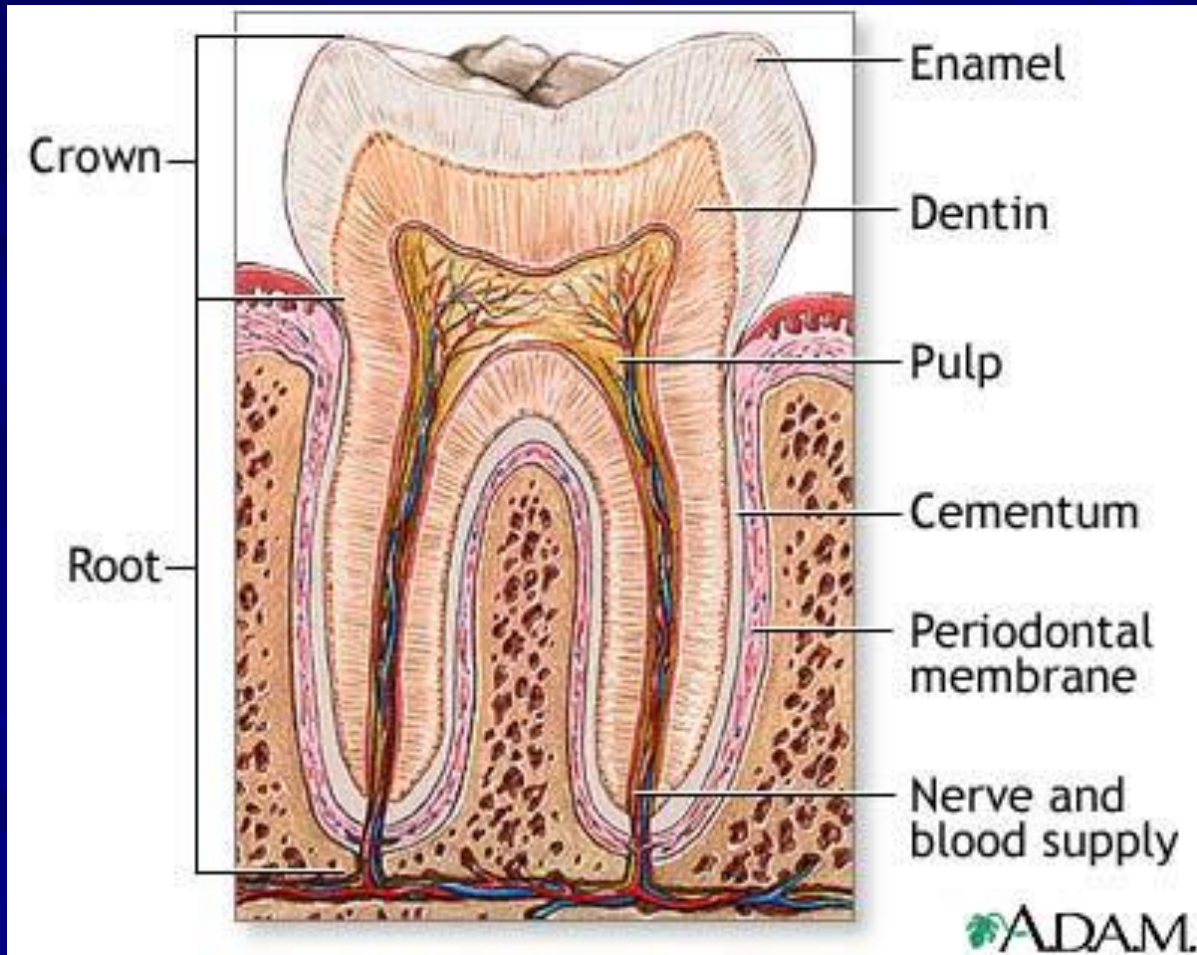


DIGESTIVE SYSTEM

TOOTH

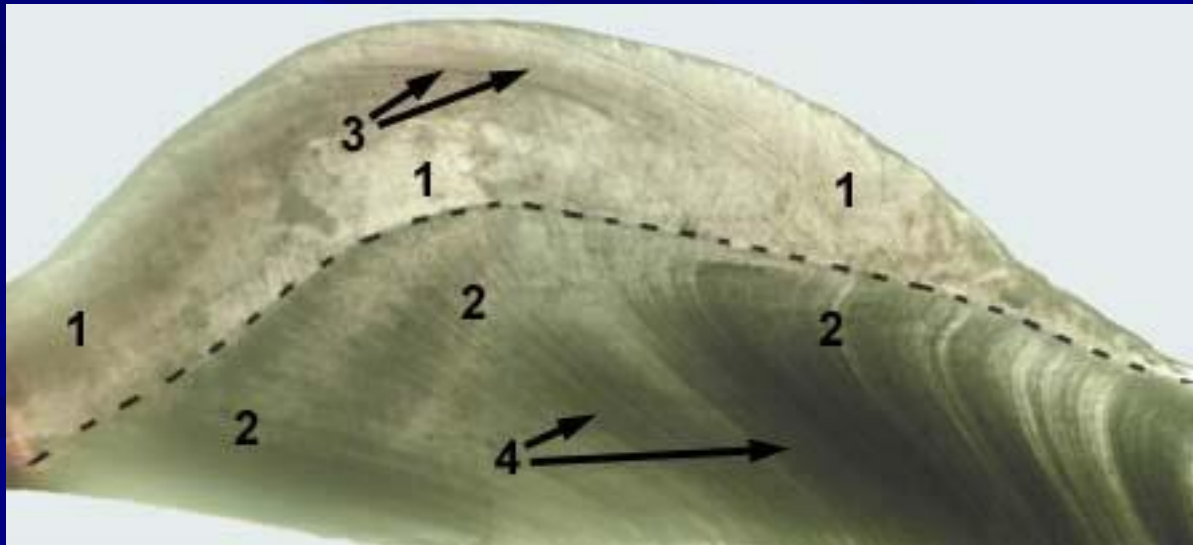


TOOTH

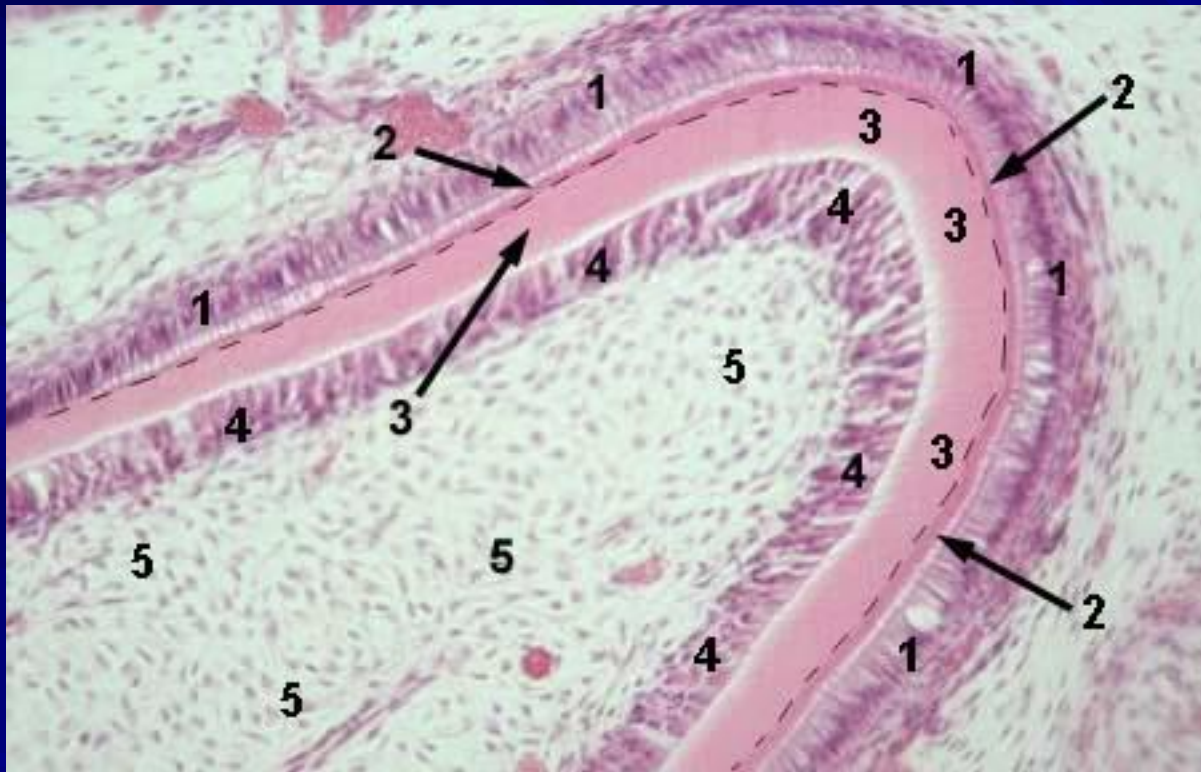


TOOTH *Nonstained*

- 1 - enamel
- 2 - dentine
- 3 - Retzius lines
- 4 - dentine tubules







TONGUE

Tongue --- Ant . 2/3 Oral part
Post . 1/3 Pharyngeal part

Consist mainly of skeletal muscles supported by connective tissue.

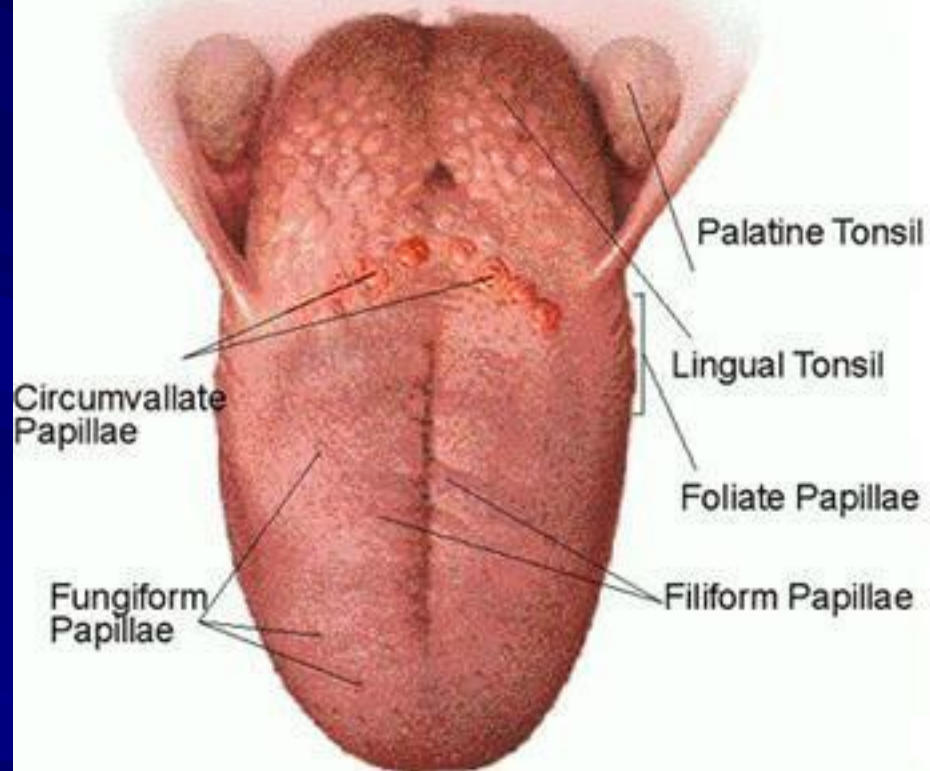
A connective tissue septum divides tongue into right and left halves.

Surface of it is covered by mucous membrane lined by non keratinized stratified squamous epithelium.

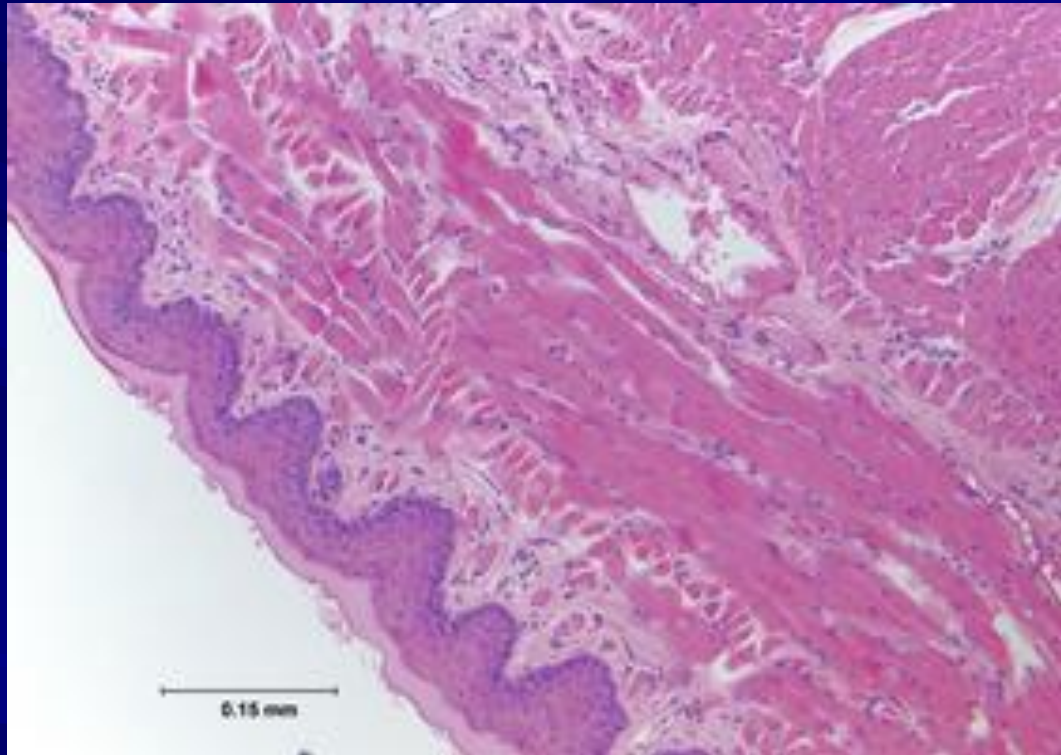
The epithelium is supported on a layer of connective tissue.

- In Ant part mucosa bears numerous projections called papillae. Each papilla consist of lining epithelium and core of connective tissue. The epithelium over papillae is keratinized. they are of various types -- Filiform papillae , small & conical in shape
 - Fungiform papillae - rounded summits and narrower bases. Bears taste buds. Finds at apex and lateral margins. Non keratinized epithelium.
 - Circumvallate papillae ant. To sulcus terminalis
- papilla simplex – microscopic form by projection of connective tissue in epithelium.
- Post. 1/3 : Lingual tonsil
- Numerous mucous and serous glands are present in connective tissue deep to epithelium.
- TASTE BUDS : they are present in relation to Circumvallate papillae , Fungiform papillae and to leaf like folds of mucosa (folia linguae) present on the posterolateral part of tongue. It's piriform structure made up of modified epithelial cells.

Tongue

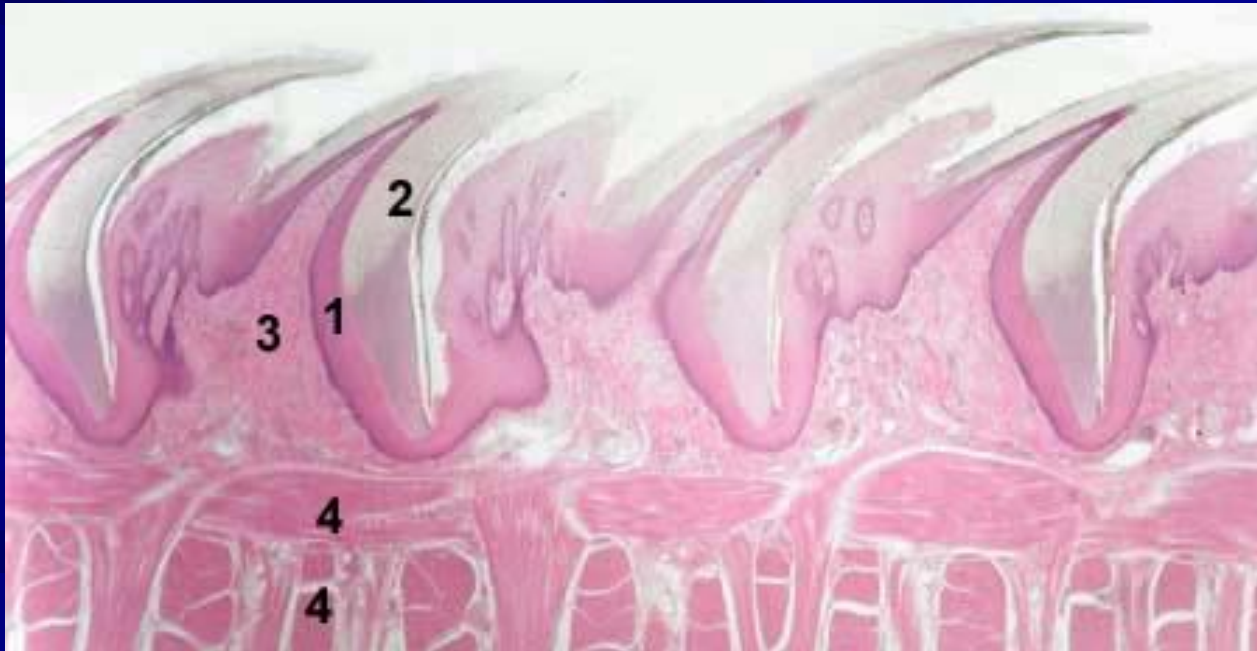






FILIFORM PAPILLAE OF THE TONGUE

- 1 - Epithelium covering papilla
(stratified squamous keratinizing)
- 2 - Keratinized layer of the epithelium
- 3 - Core of the papilla
- 4 - Muscles



FUNGIFORM PAPILLAE

LEAF SHAPED PAPILLAE OF THE TONGUE

- 1 - epithelium covering papilla
(stratified squamous nonkeratinizing)
- 2 - core of the papilla (lamina propria
of the mucosa of dorsal surface of the tongue)
- 3 - taste buds



CIRCUMVALLATE PAPILLAE OF THE TONGUE

- 1 - epithelium covering papilla (stratified squamo nonkeratinizing)
- 2 - core of the papilla (lamina propria of the mucosa of dorsal surface of the tongue)
- 3 - taste buds



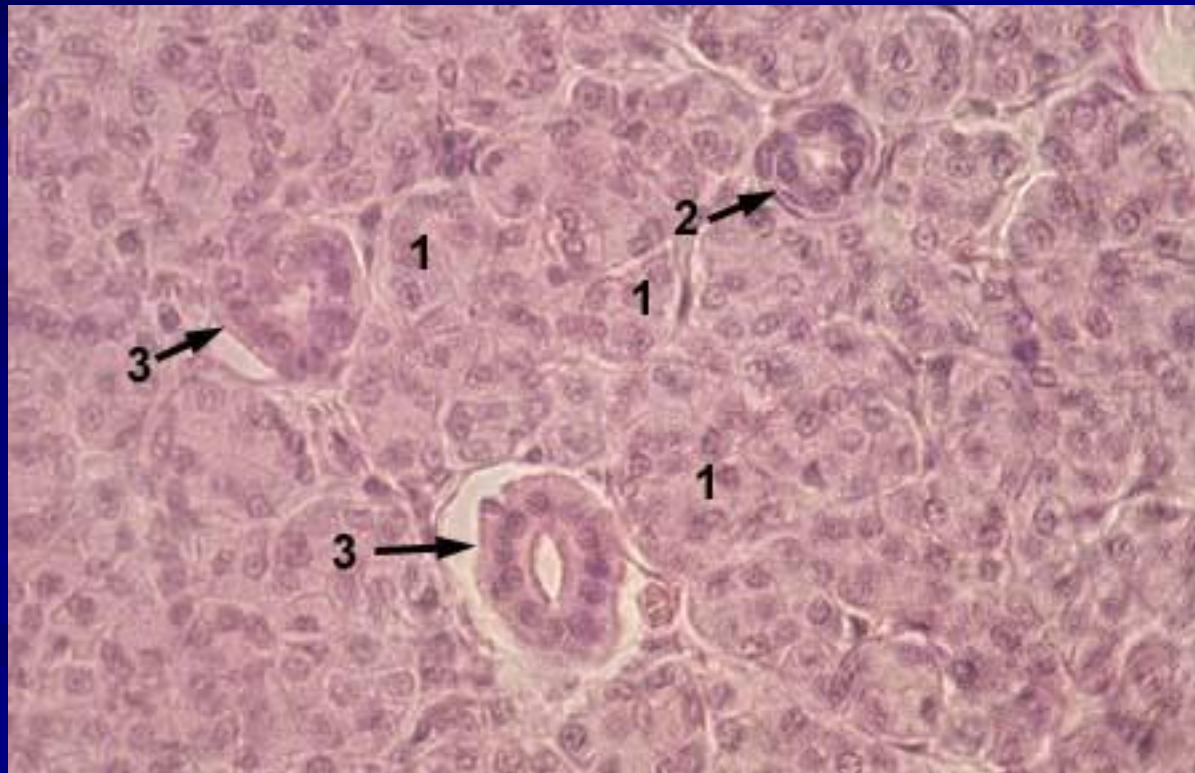
PAROTID SALIVARY GLAND

- 1 - serous secretory units (acini)
- 2 - intercalated excretory duct
- 3 - striated excretory duct
- 4 - interlobular excretory duct
- 5 - interlobular connective tissue septa



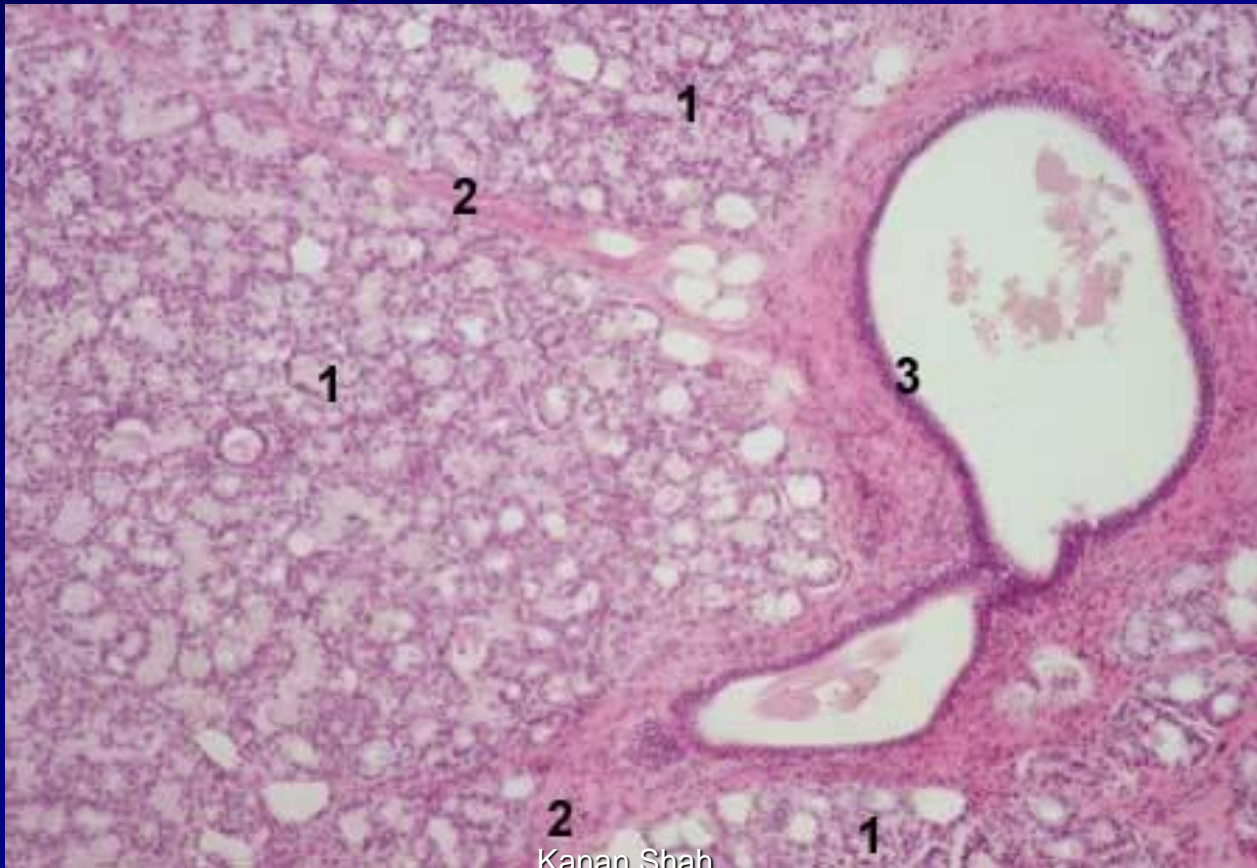
PAROTID SALIVARY GLAND

- 1 - serous secretory units
- 2 - intercalated excretory duct
- 3 - striated excretory duct



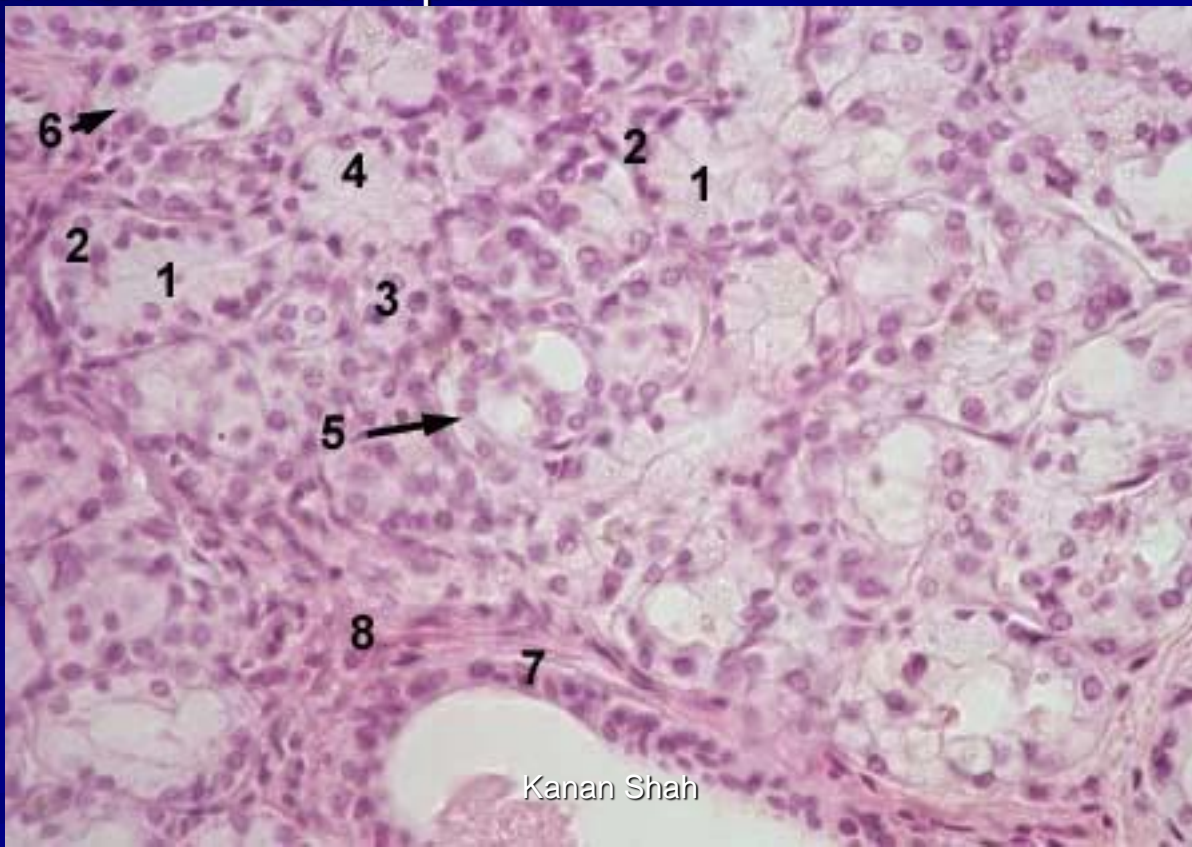
SUBLINGUAL SALIVARY GLAND

- 1 - lobules of the gland
- 2 - interlobular connective tissue septa
- 3 - interlobular excretory duct



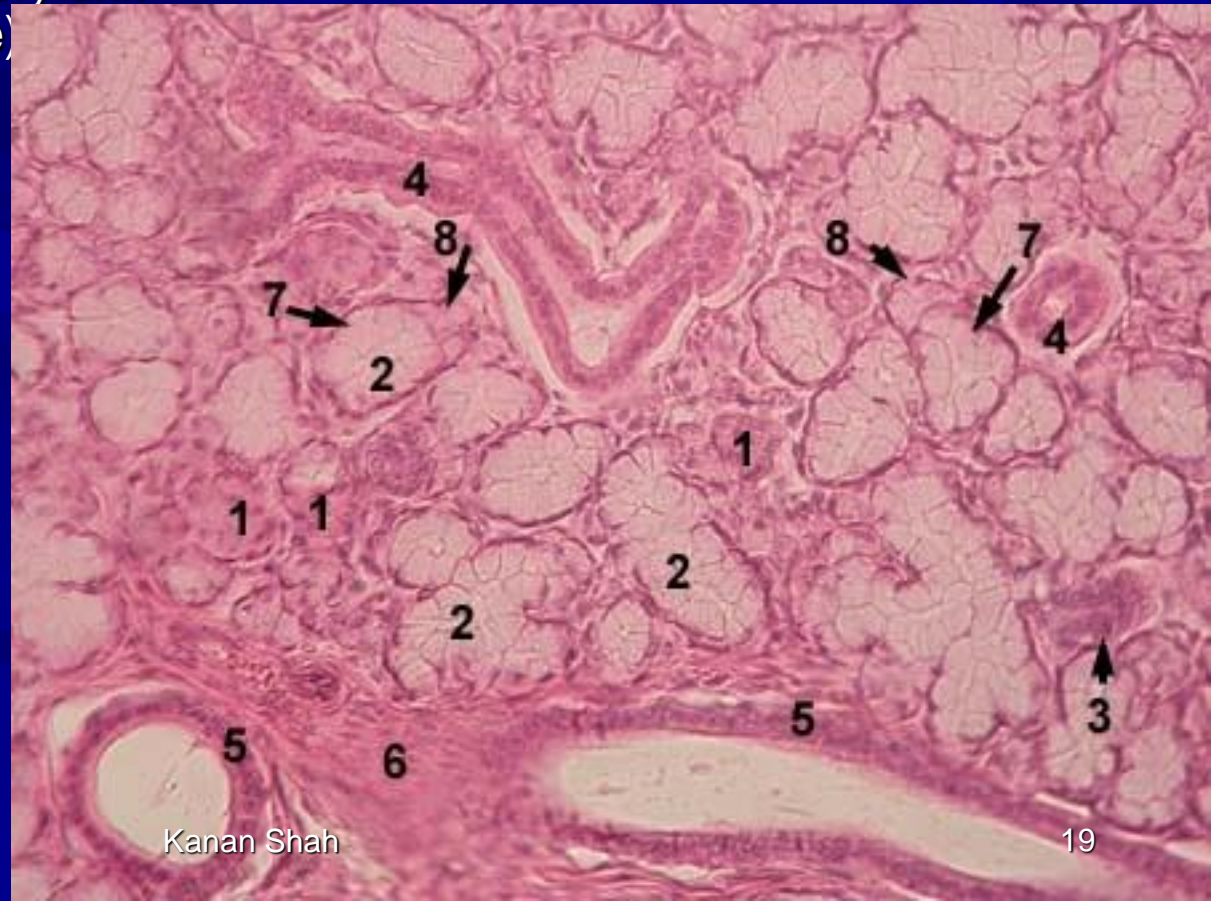
■ SUBLINGUAL SALIVARY GLAND

- 1 - mucous part of mixed secretory unit
- 2 - serous part (serous demilune) of mixed secretory unit
- 3 - serous secretory unit
- 4 - mucous secretory unit
- 5 - intercalated excretory duct
- 6 - striated excretory duct
- 7 - interlobular excretory duct
- 8 - interlobular connective tissue septa



SUBMANDIBULAR SALIVARY GLAND

- 1 - serous secretory unit
- 2 - mixed secretory unit
- 3 - intercalated excretory duct
- 4 - striated excretory duct
- 5 - interlobular excretory duct
- 6 - interlobular connective tissue septa
- 7 - mucous part of mixed secretory unit
- 8 - serous part (serous demilune)
mixed secretory unit



Aknowledgement

- Inderbir Singh's Textbook of Human Histology
- Textbook of Histology- Atlas and Practical Guide by JP Gunasegaran
- Difiore's Atlas of Histology
- Images from Google
- Histology Text & Atlas -Brijeshkumar