

Kanan Shah



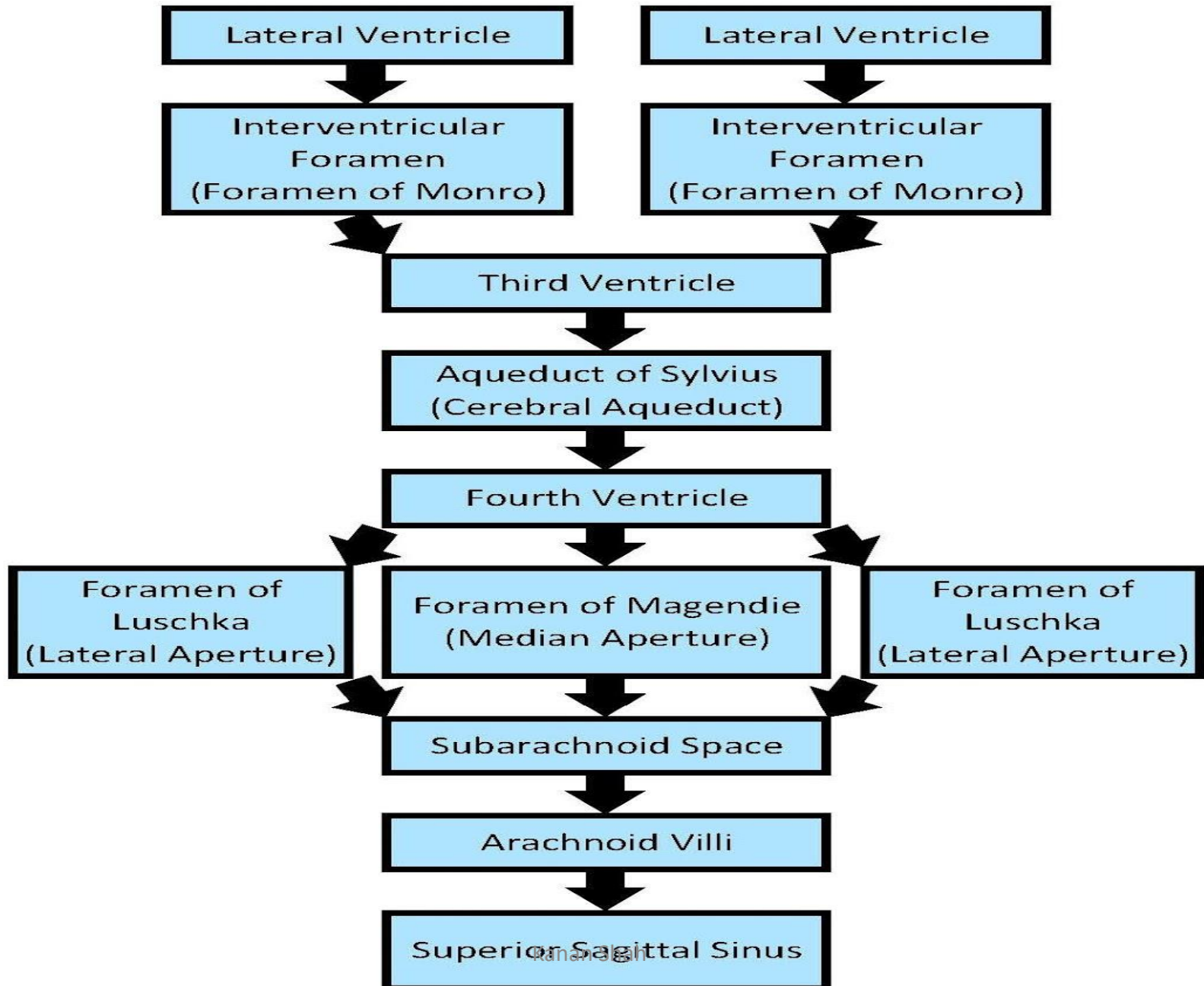
CEREBROSPINAL FLUID

Clear, Colorless and Odourless liquid

Fills ventricular system and
subarachnoid space

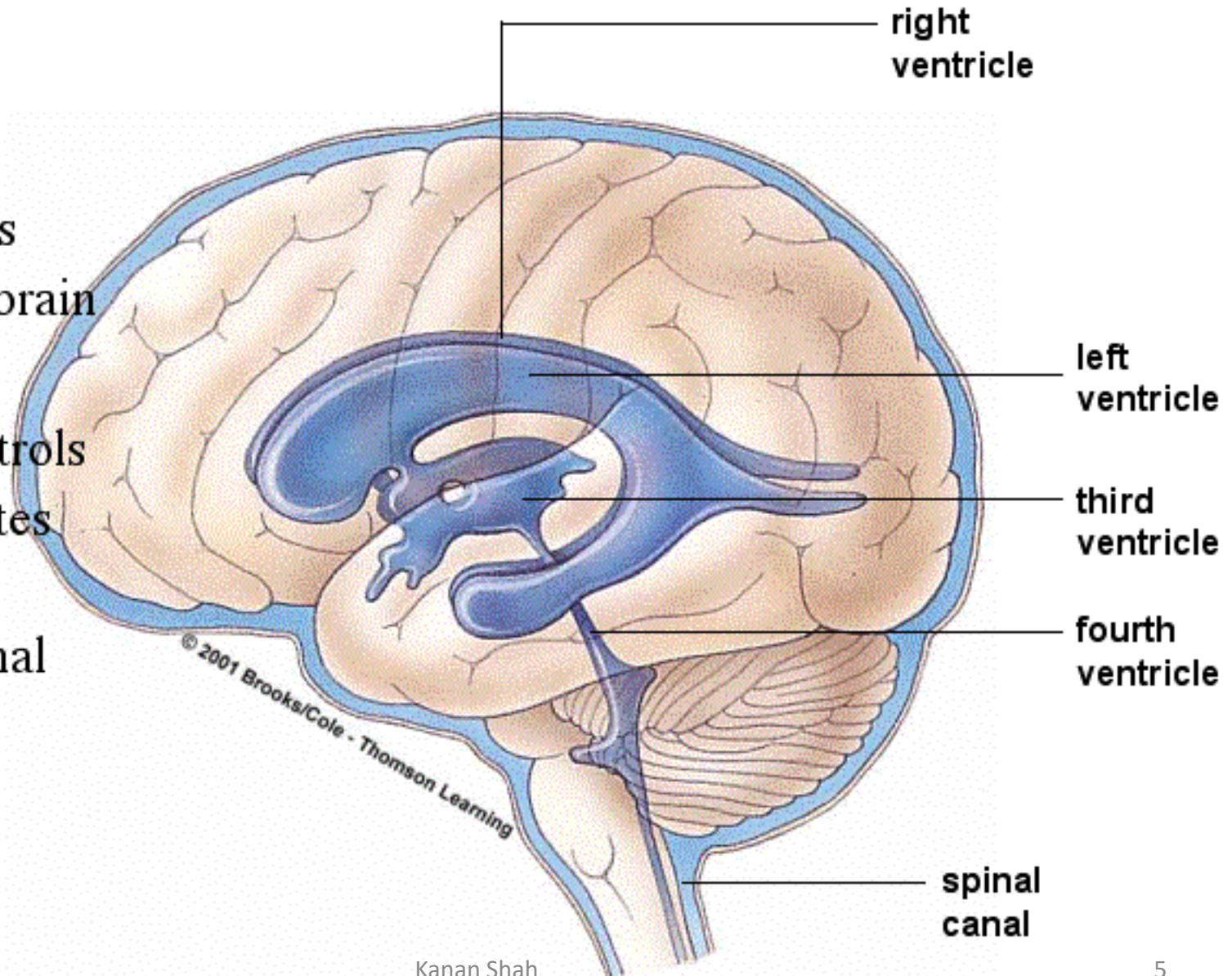
- Specific gravity----1007
- Ph----- 7.35
- Volume--- 135 ml
- Rate of formation---600-700/day
- Pressure---80-180mm of water

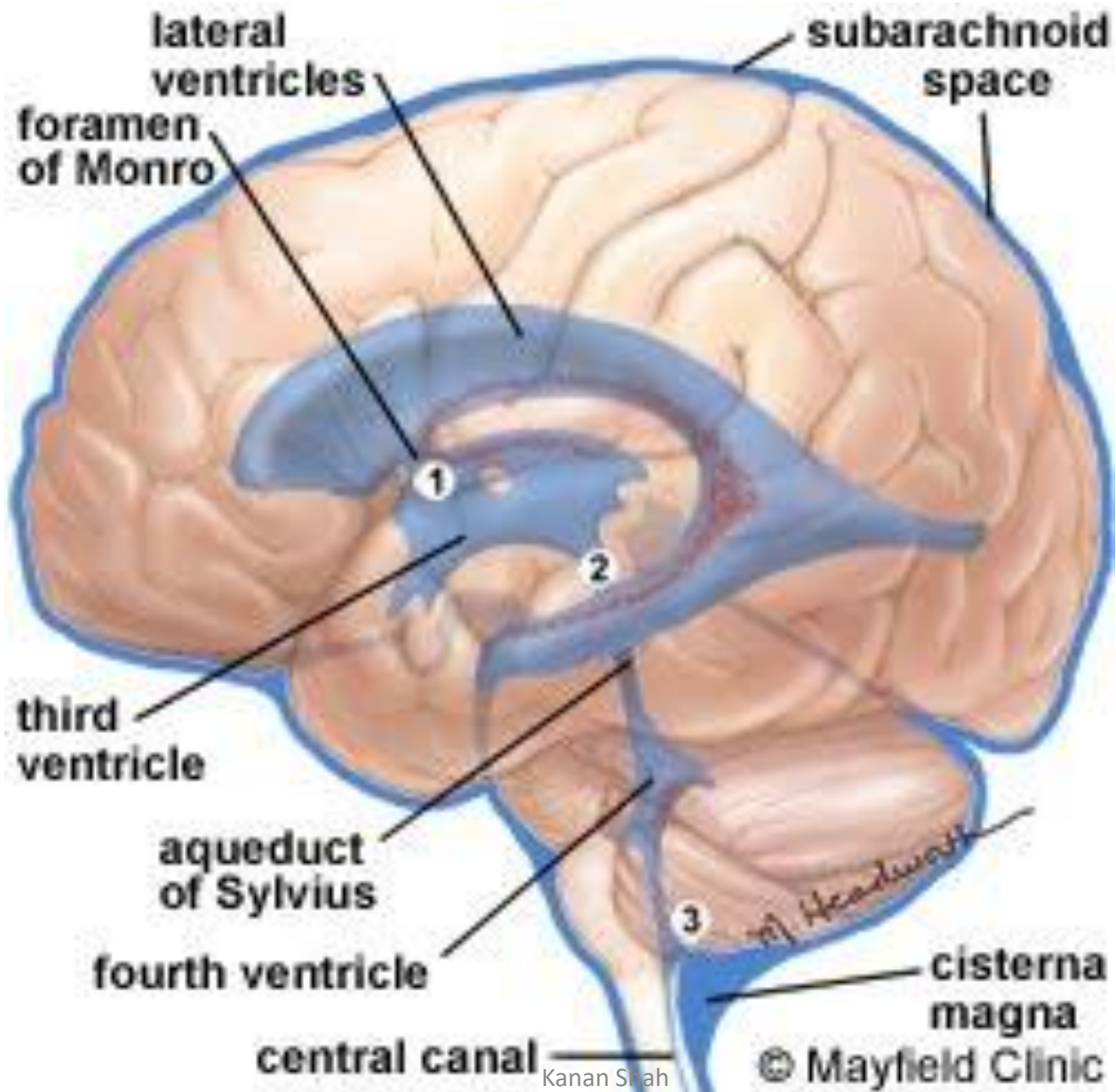
Circulation of Cerebrospinal Fluid (CSF)

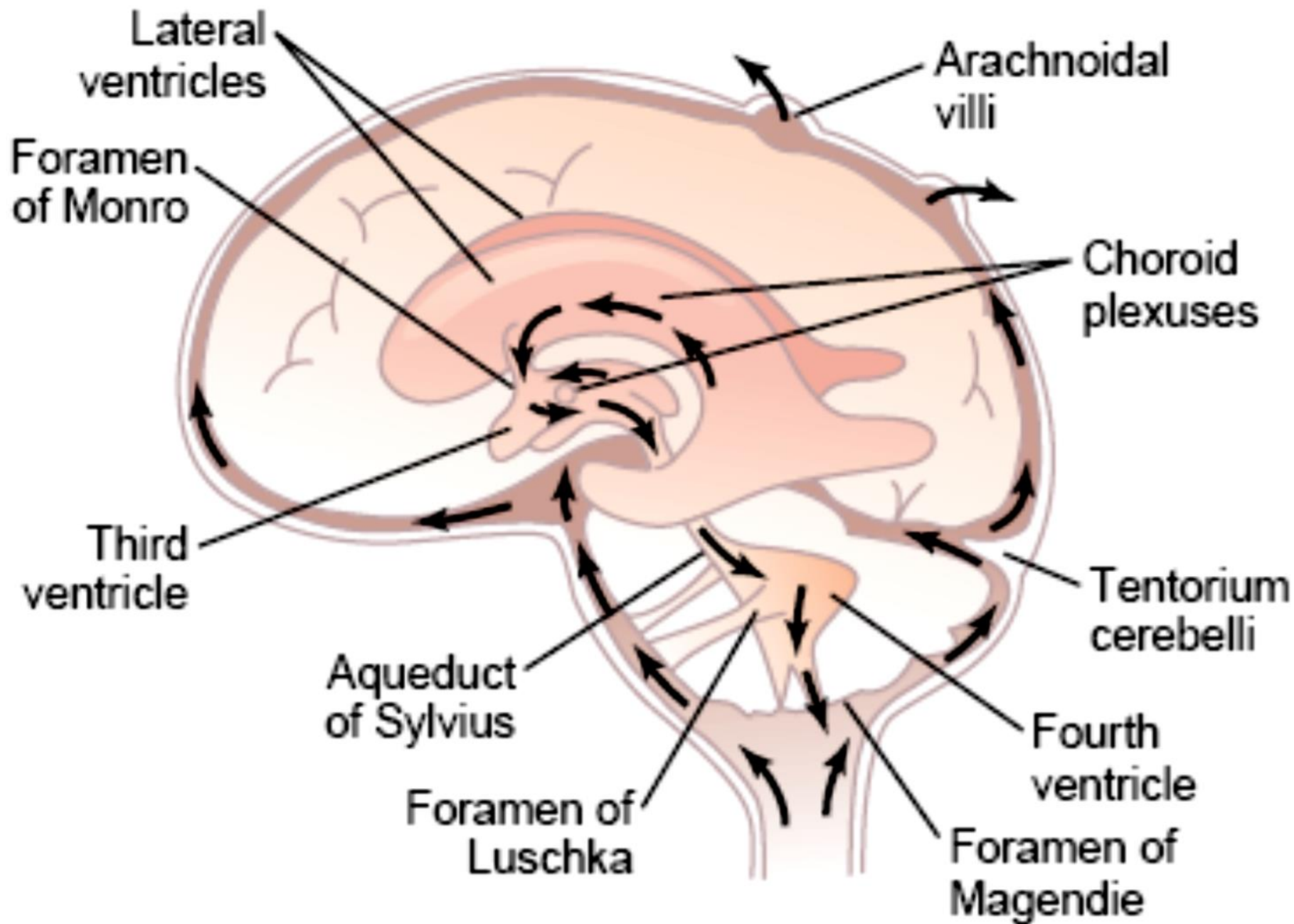


Cerebrospinal Fluid

Surrounds the spinal cord
Fills ventricles within the brain
Blood-brain barrier controls which solutes enter the cerebrospinal fluid







Functions

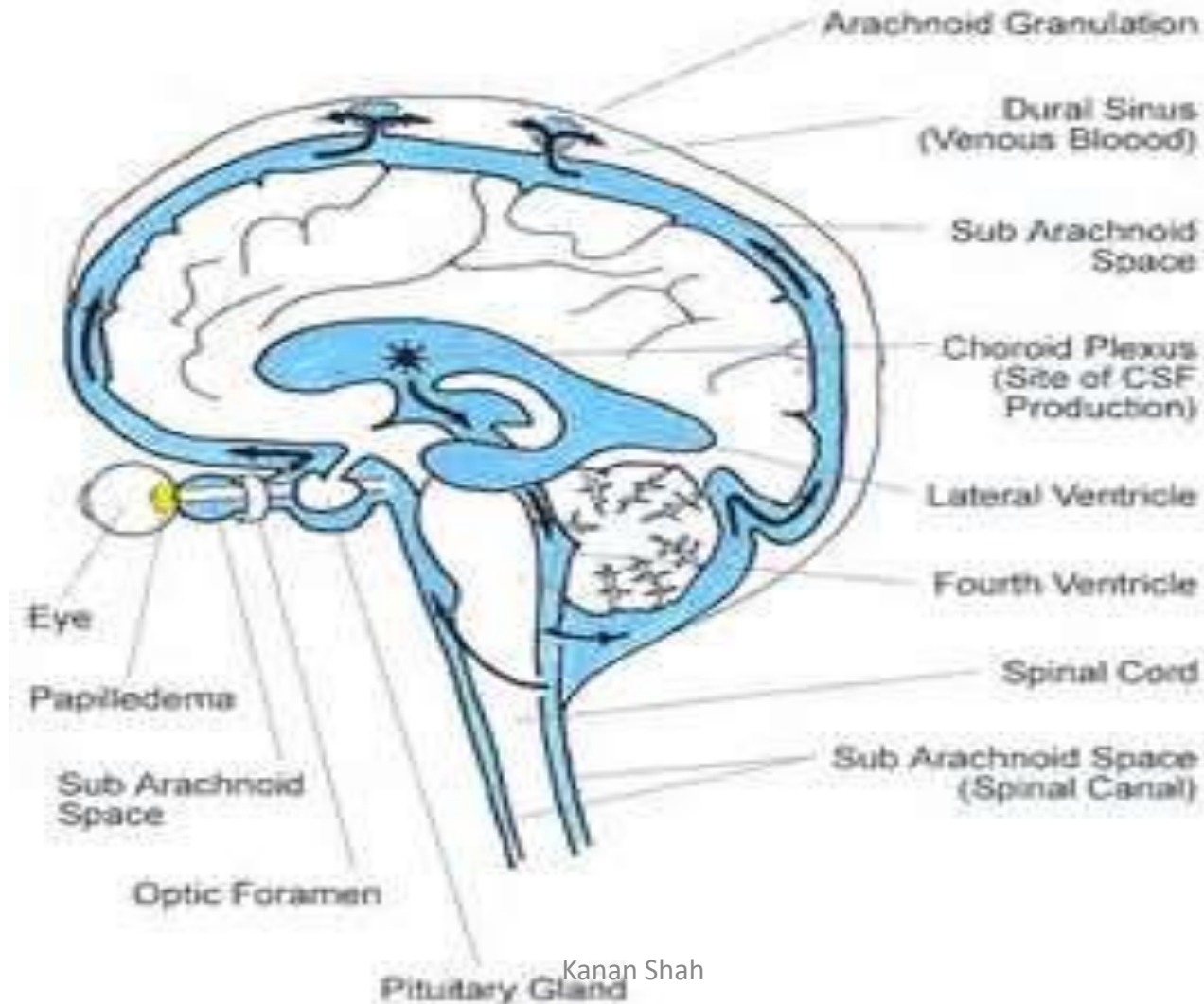
- Hydraulic shock absorber
- Monro-kellie doctrine
- Nutrition
- Help in release of hormones
- Act as sensitive mirror

Applied Anatomy

- Hydrocephalus
 - External
 - Internal
 - Communicating
- Pneumoencephalography

Foster-Kennedy syndrome

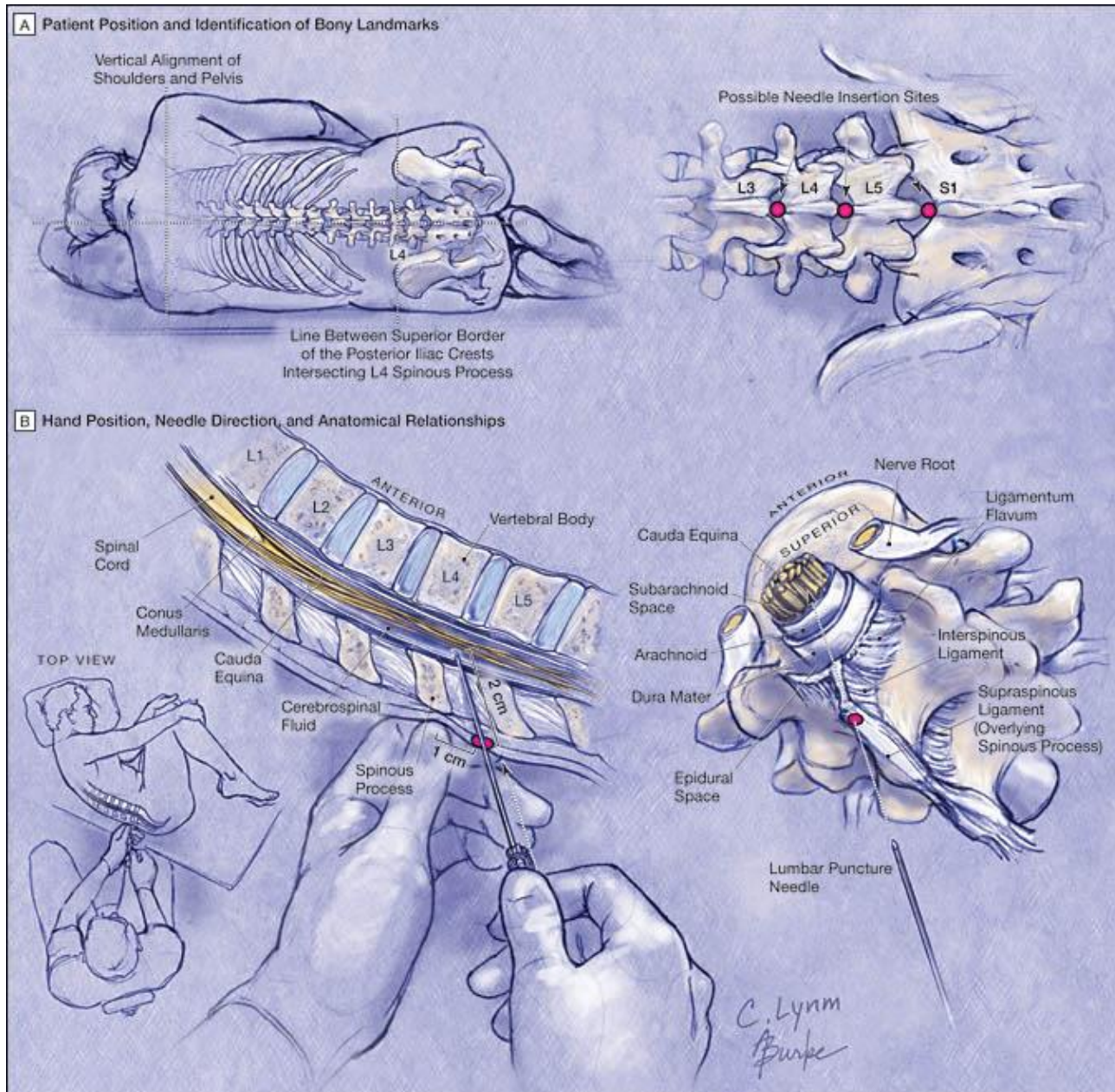
Papilledema



QUECKENSTEDT TEST

LUMBER PUNCTURE

----- 1 drop / sec



Aknowledgement

- Essentials of Head, Neck & Brain
AsimKumar Dutta
- Human Anatomy –B D Chaurasia