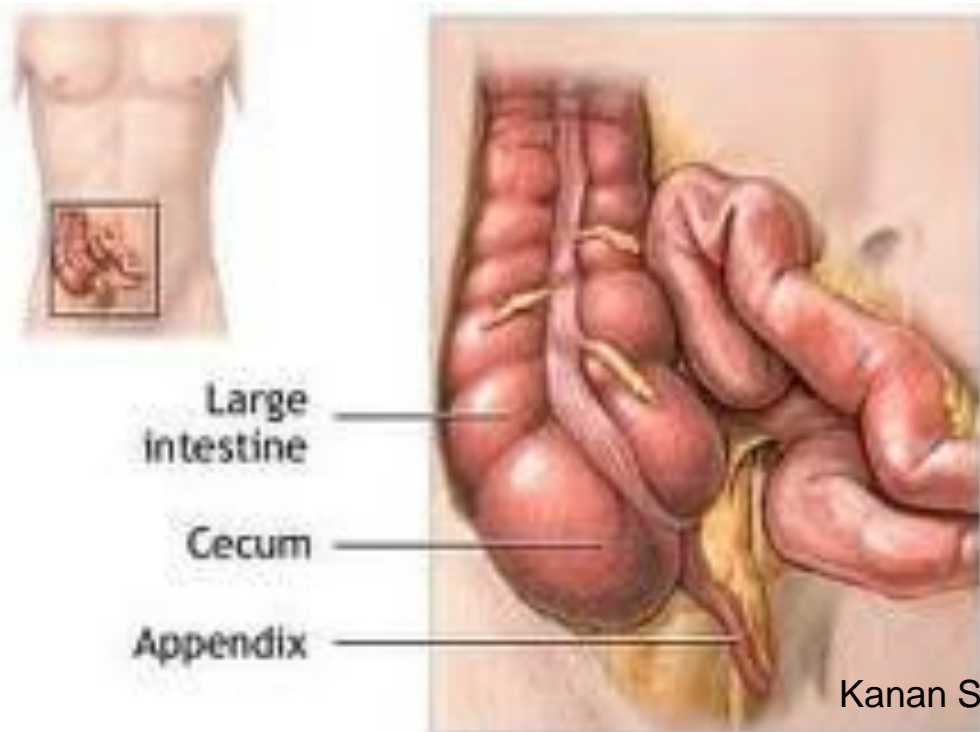


# CAECUM

BLIND SAC FORMING  
COMMENCEMENT OF LARGE  
GUT

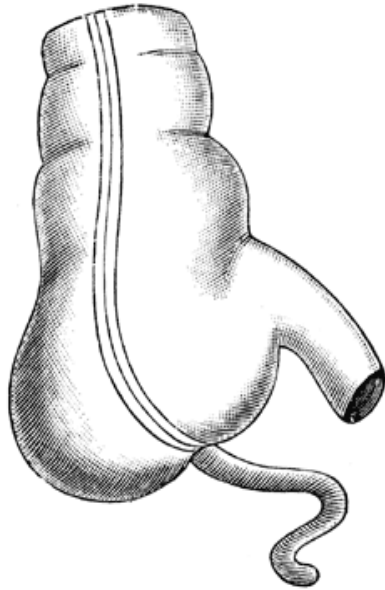
- **SITUATION:**  
Right iliac fossa

- **SIZE:** 6 X 7.5 cm
- **SHAPE:**  
Asymmetrical  
cul-de-sac



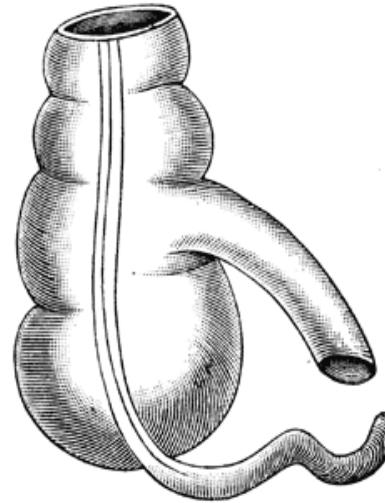
# TYPES

TYPE III.



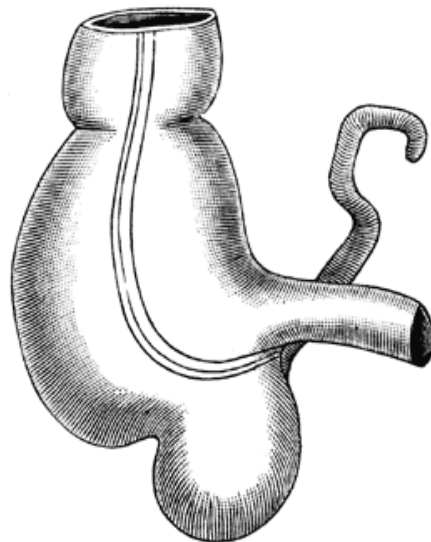
90%

TYPE II.



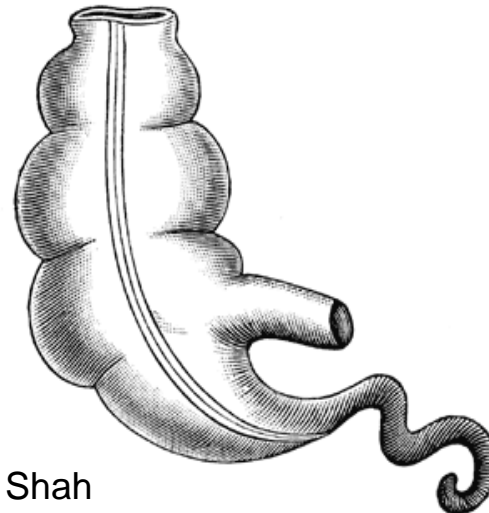
3%

TYPE IV.



4%

TYPE I (Treves).



2%

# RELATION

- **PERITONEAL:**

- **GENERAL: Ant.:** Ant. abdominal wall  
lower margin of greater  
omentum

**coils of ileum**

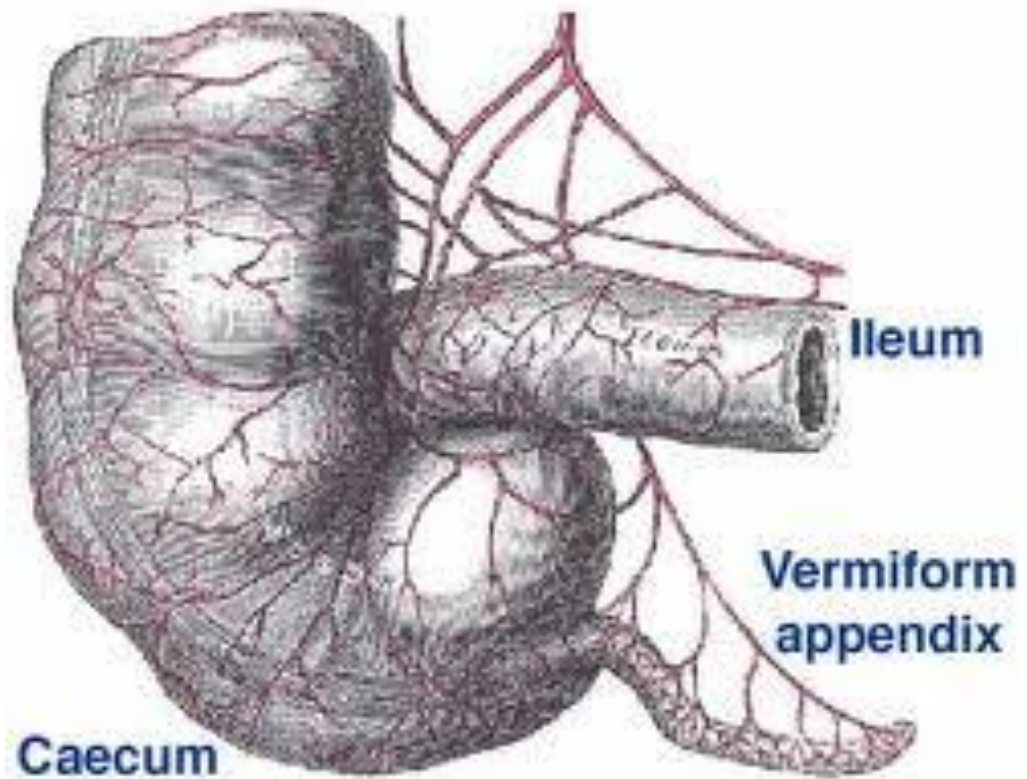
**Post.:** Rt. iliopsoas muscle  
fascia iliaca  
lat. Femoral cutaneous Nerve  
Trunk of femoral nerve  
Genitofemoral nerve  
Retrocecal recess of peritoneum with  
appendix

**Above:** Ascending colon

**Below:** Lat. half of inguinal ligament

**Medially:** Terminal part of ileum, Appendix

- **VENOUS DRAINAGE :**  
Superior mesenteric vein
- **ARTERIAL SUPPLY:**  
Caecal branches of iliocolic artery
- **NERVE SUPPLY:**  
Sympathetic – T 10 - L 1  
Parasympathetic – Vagus n.
- **LYMPHATIC DRAINAGE:**  
Iliocolic nodes → Superior mesenteric  
group of preaortic nodes



- **STRUCTURE: Four coats of GIT**
  - Serous**
  - Muscular**
  - Submucous**
  - Mucosa**

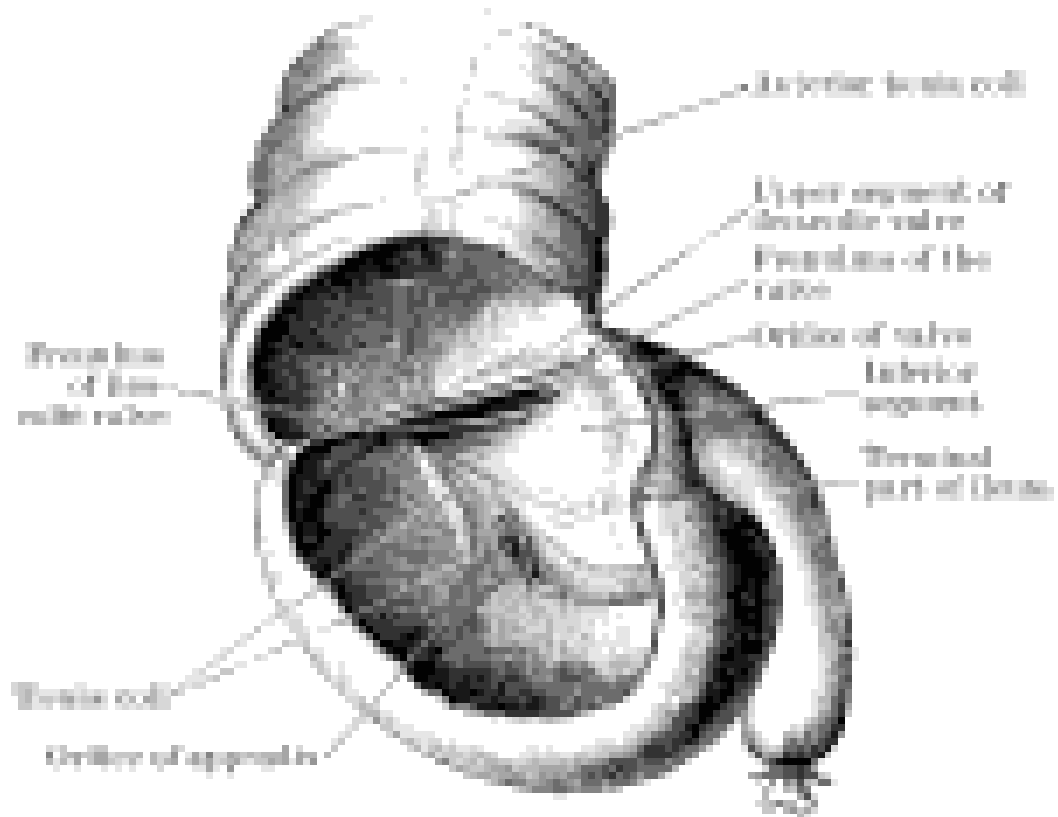
- INTERIOR FEATURES:  
    ILIOCAECAL ORIFICE  
    APPENDICULAR ORIFICE  
    Valve of Gerlach



Kanan Shah

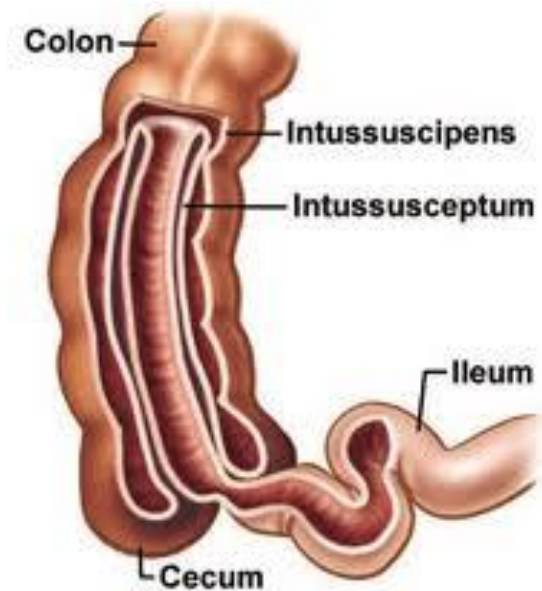
ga135004 [www.fotosearch.com](http://www.fotosearch.com)



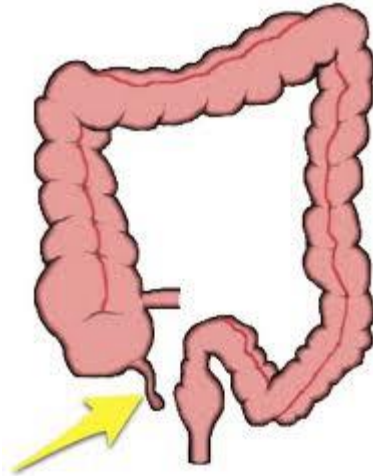


# APPLIED ANATOMY

- Act as a guide in operation of intestinal obstruction.
- INTUSSUSCEPTION
- TUBERCULOSIS
- CARCINOMA
- CAECITIS OR TYPHLITIS
- AMOEBIASIS
- CELLULOSE DIGESTING BACTERIA PRESENT HERE.



# APPENDIX



WORM LIKE DIVERTICULUM OF CAECUM.  
PART OF LARGE INTESTINE,  
DEVOID OF TAENIA COLI, SACCULATIONS  
AND APPENDICES EPIPLOICA.

- SURFACE ANATOMY:

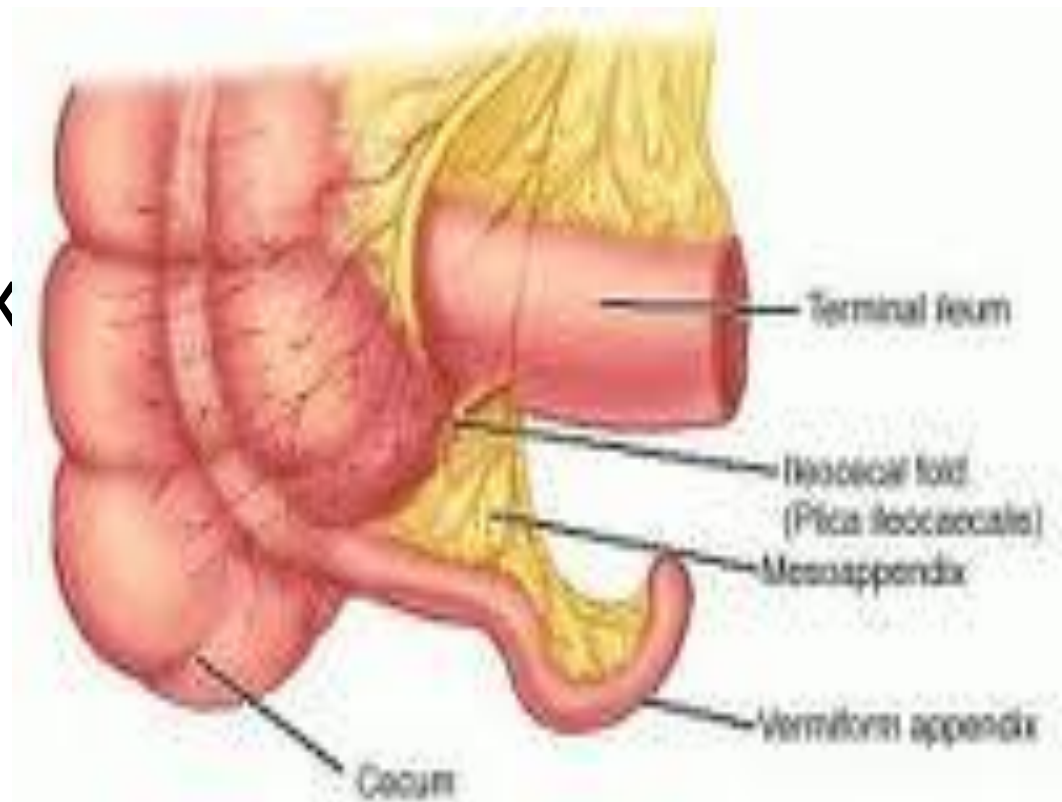
Point 2cm below the intersection between the transtubercular plane and Rt. Lateral planes.

**MC BURNEY'S POINT**

- Length: 2 – 20 cm
- Lumem: small  
may be completely or partially  
obliterated after mid adult life.

# Presenting parts

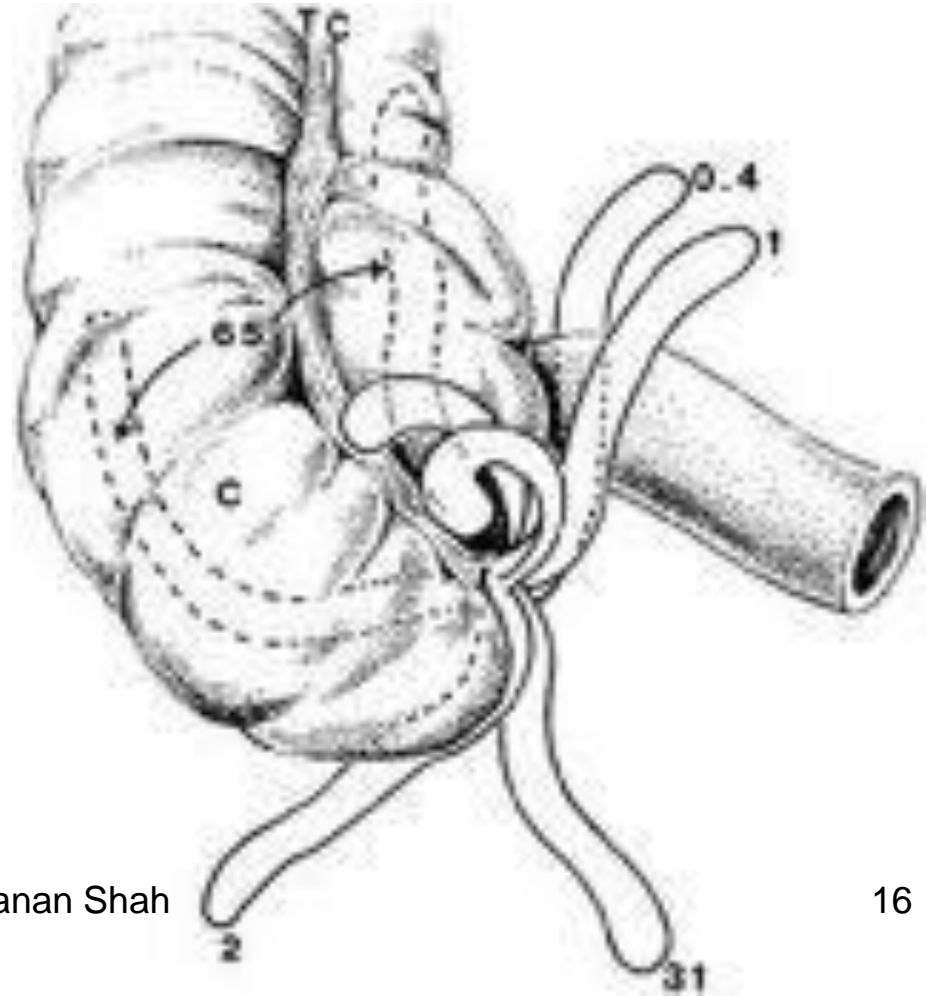
- Base
- Body
- Tip
- Mesoappendix





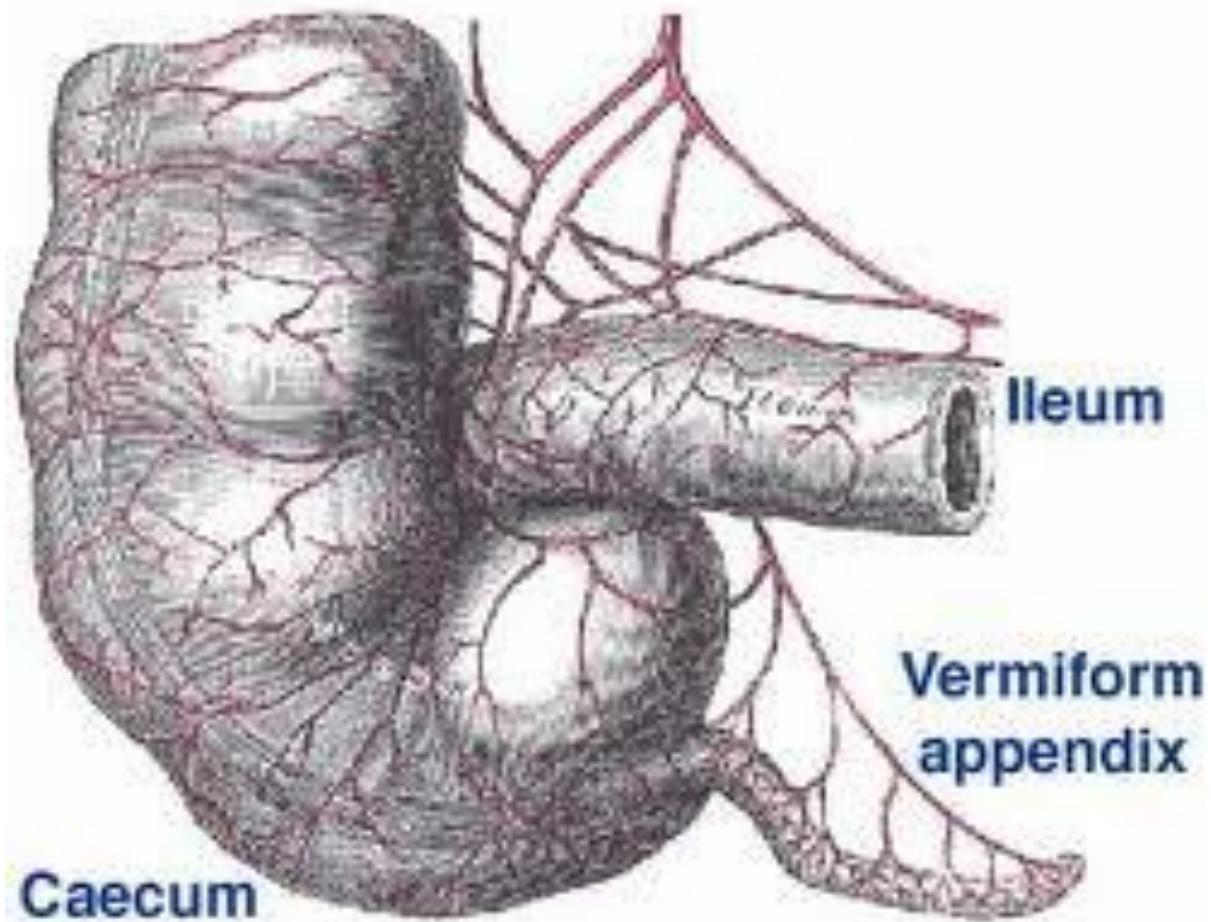
# TYPES

- Subcaecal & paracolic – 2%
- Retrocolic – 60%
- Splenic – 1 – 2%
- Promonteric
- Pelvic – 30%
- Midinguinal
- Ectopic





- Blood supply : Appendicular artery
- Venous drainage: Sup.Mesenteric vein
- Lymphatic drainage: Iliocolic nodes  
|  
Sup.mesenteric nodes
- Nerve supply:  
    Sympathetic: Sup. Mesenteric plexus  
    T 10  
    Parasympathetic: Vagus



- STRUCTURE:

Serous

Muscular coat– Hiatus muscularis

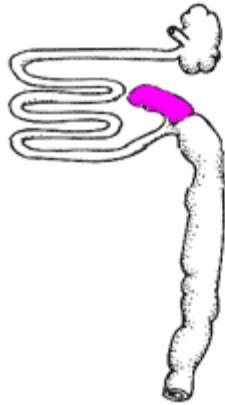
Submucous– Abdominal tonsil

Mucous membrane

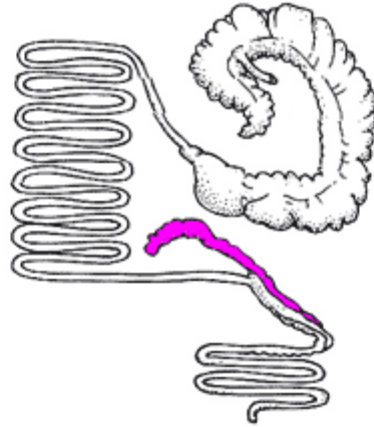


# APPLIED ANATOMY

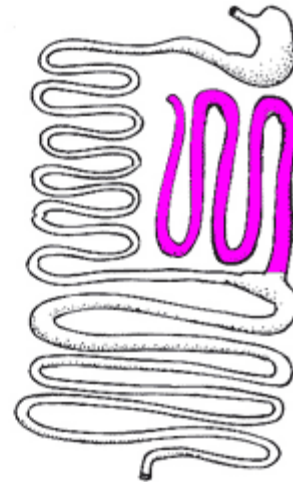
- APPENDICULAR DYSPEPSIA
- APPENDICITIS



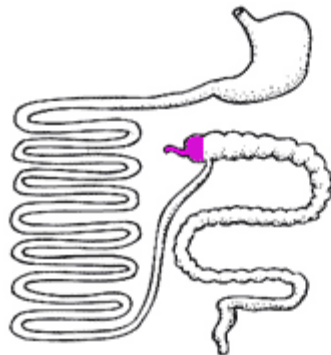
Opossum



Kangaroo



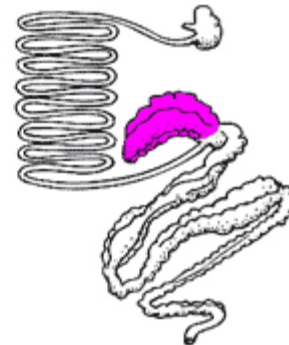
Koala



Human



Rabbit



Zebra

# Aknowledgements

- Human Anatomy by BD Chaurasia
- Gray's Anatomy
- Essentials of Human Antomy: Thorax and Abdomen by Asimkumar Dutta