

# BONE

MODIFIED CONNECTIVE TISSUE

SCLERAL CONNECTIVE TISSUE

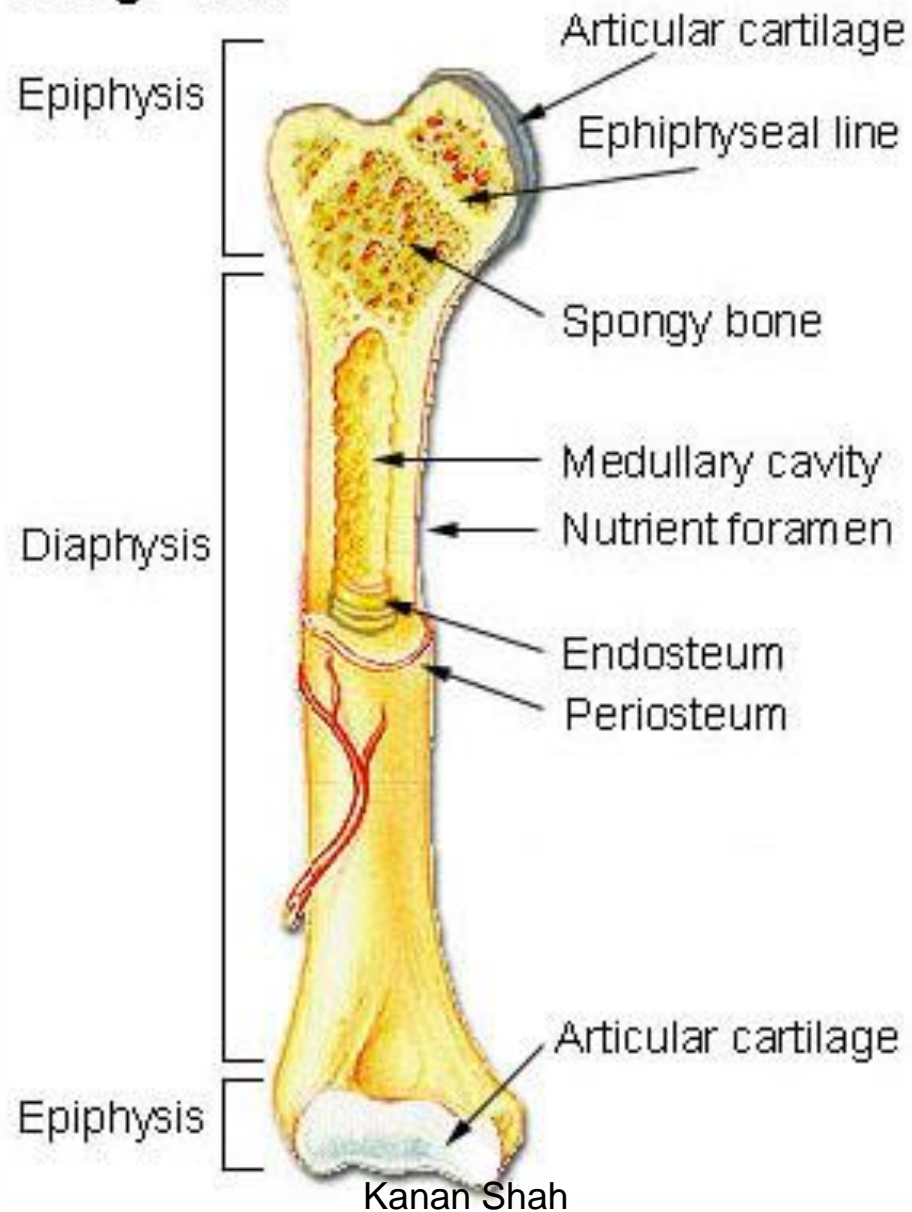
# GENERAL FEATURES

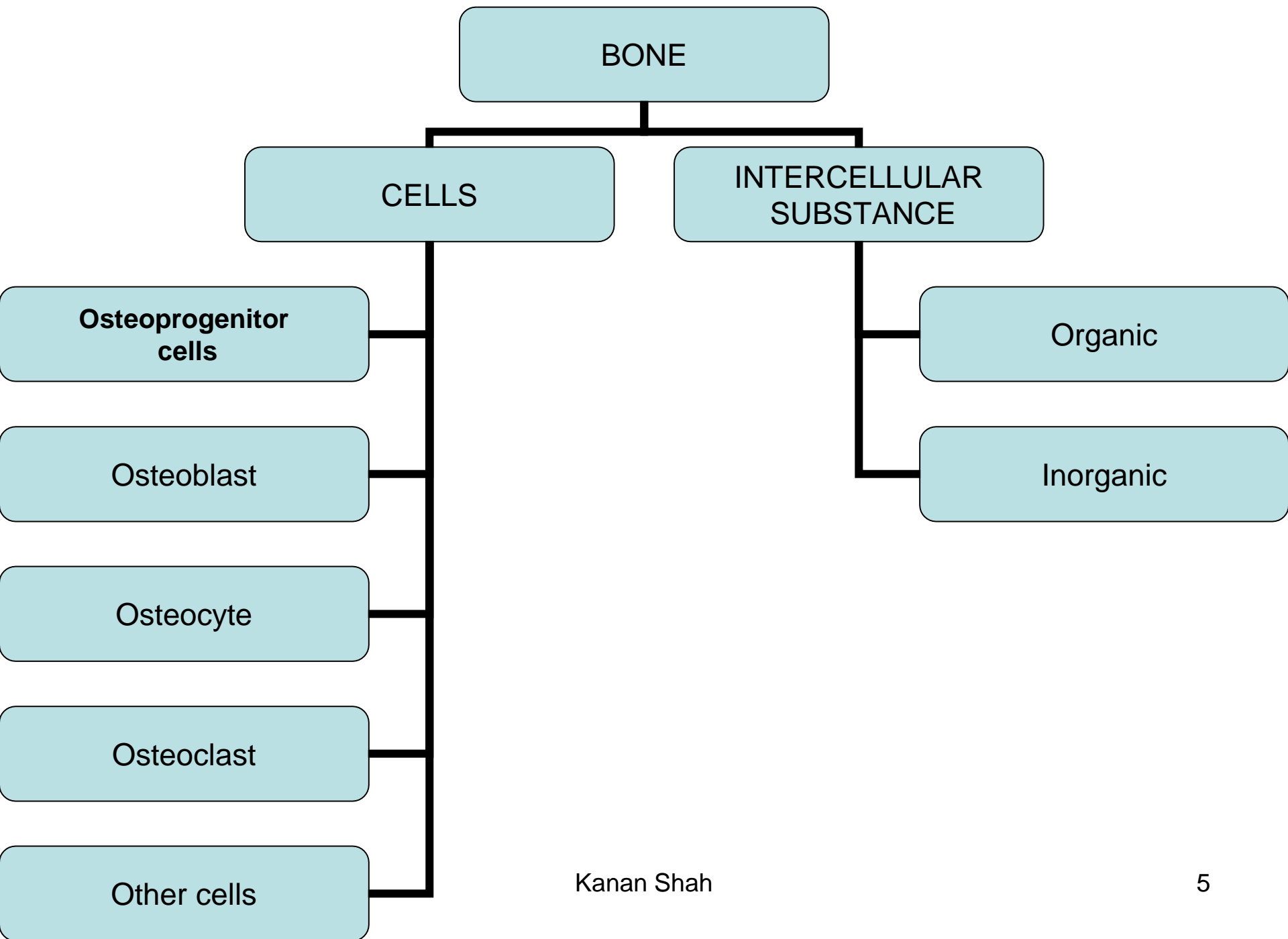
- Hard & rigid
- Forms skeletons of the higher vertebrates.
- Like all tissue it is made up of cells & intercellular substance. In ICS the deposition of inorganic salts in ground substance.
- Highest differentiated among all connective tissue.
- Bone is capable of remodelling its internal structure according different stresses to which it is subjected.
- PERIOSTEUM                      ENDOSTEUM

# STRUCTURAL CLASSIFICATION

- MACROSCOPIC :
  - COMPACT
  - CANCELLOUS
- MICROSCOPIC :
  - LAMELLAR
  - WOVEN
  - DENTINE
  - CEMENT

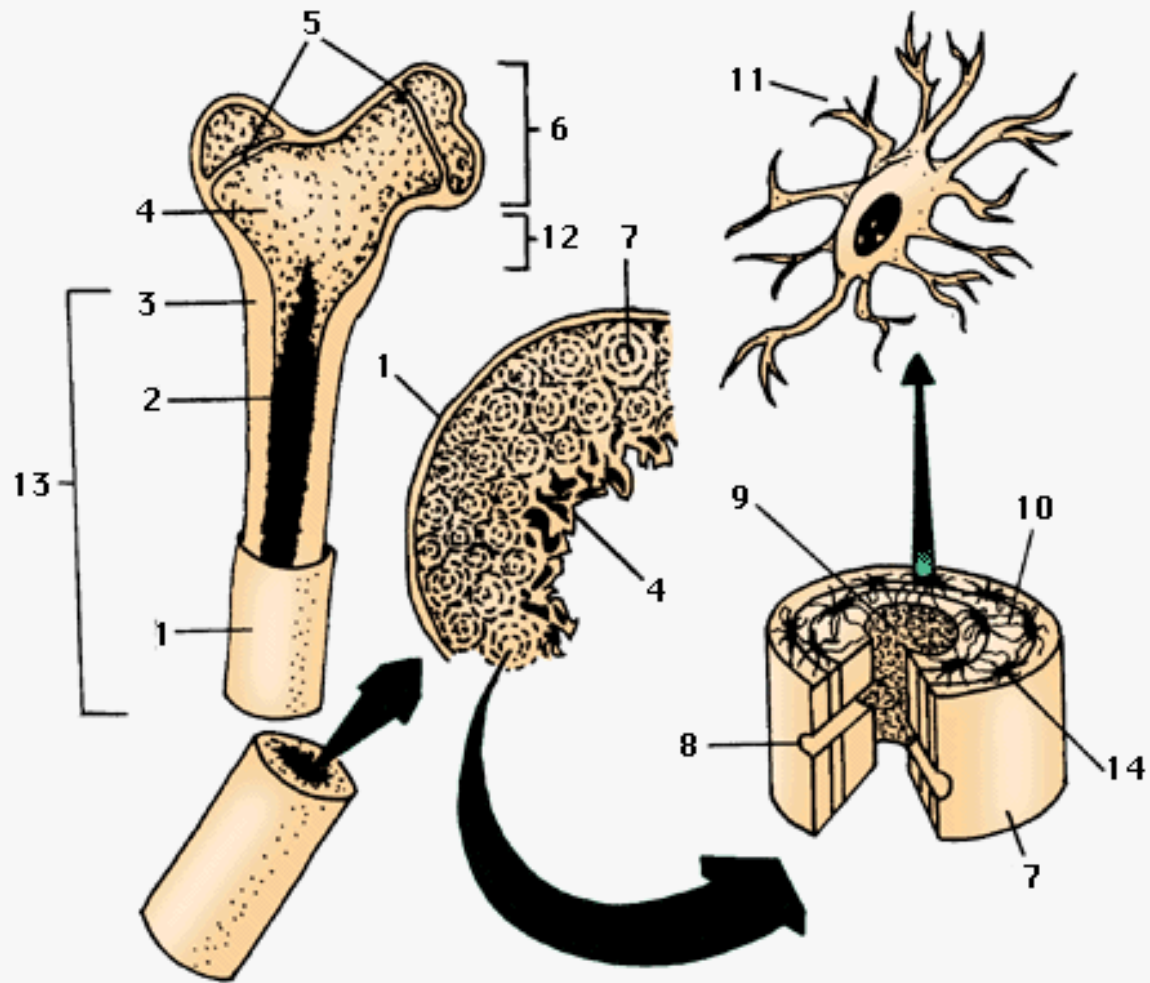
## Long Bone

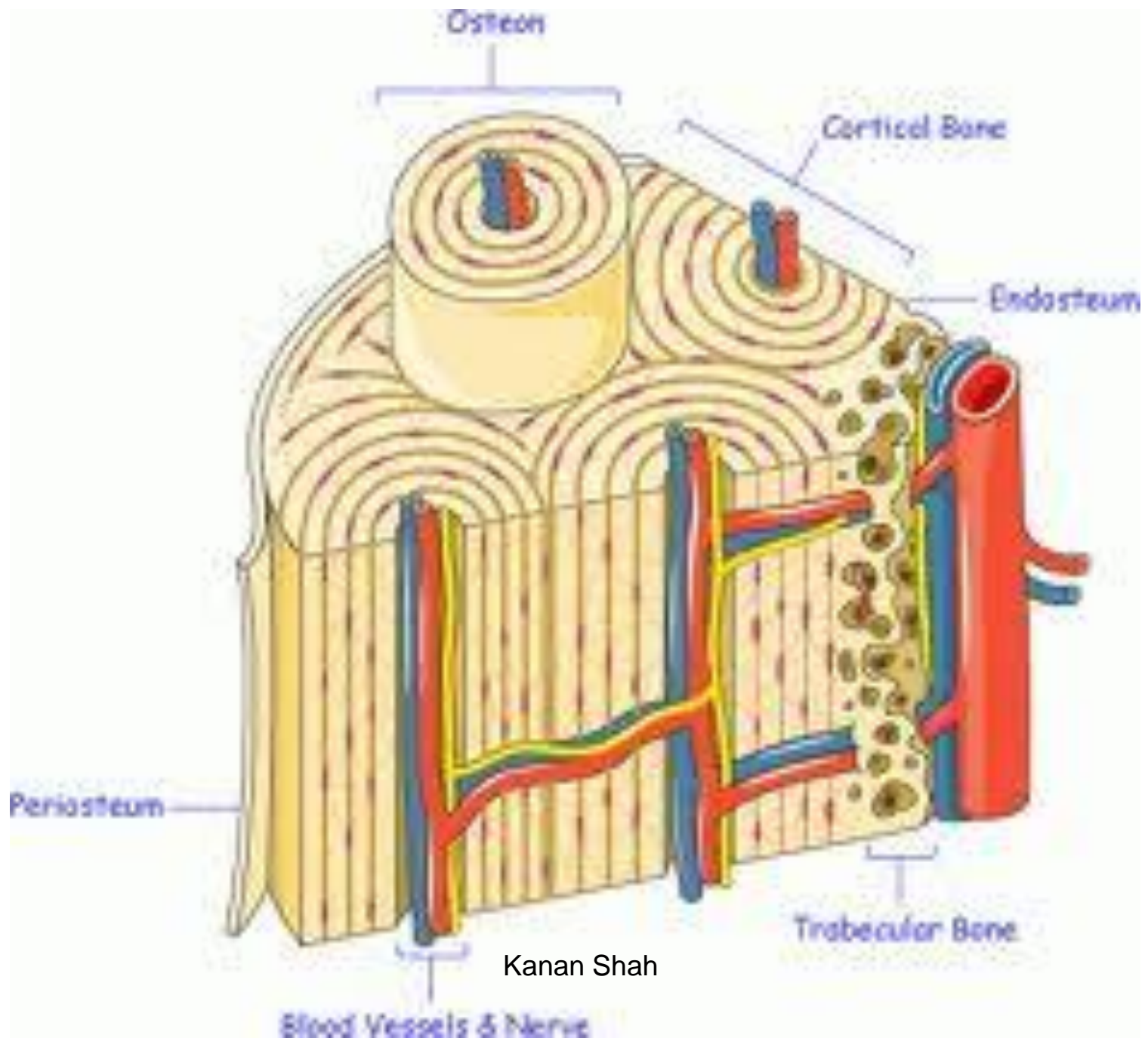




# COMPACT BONE

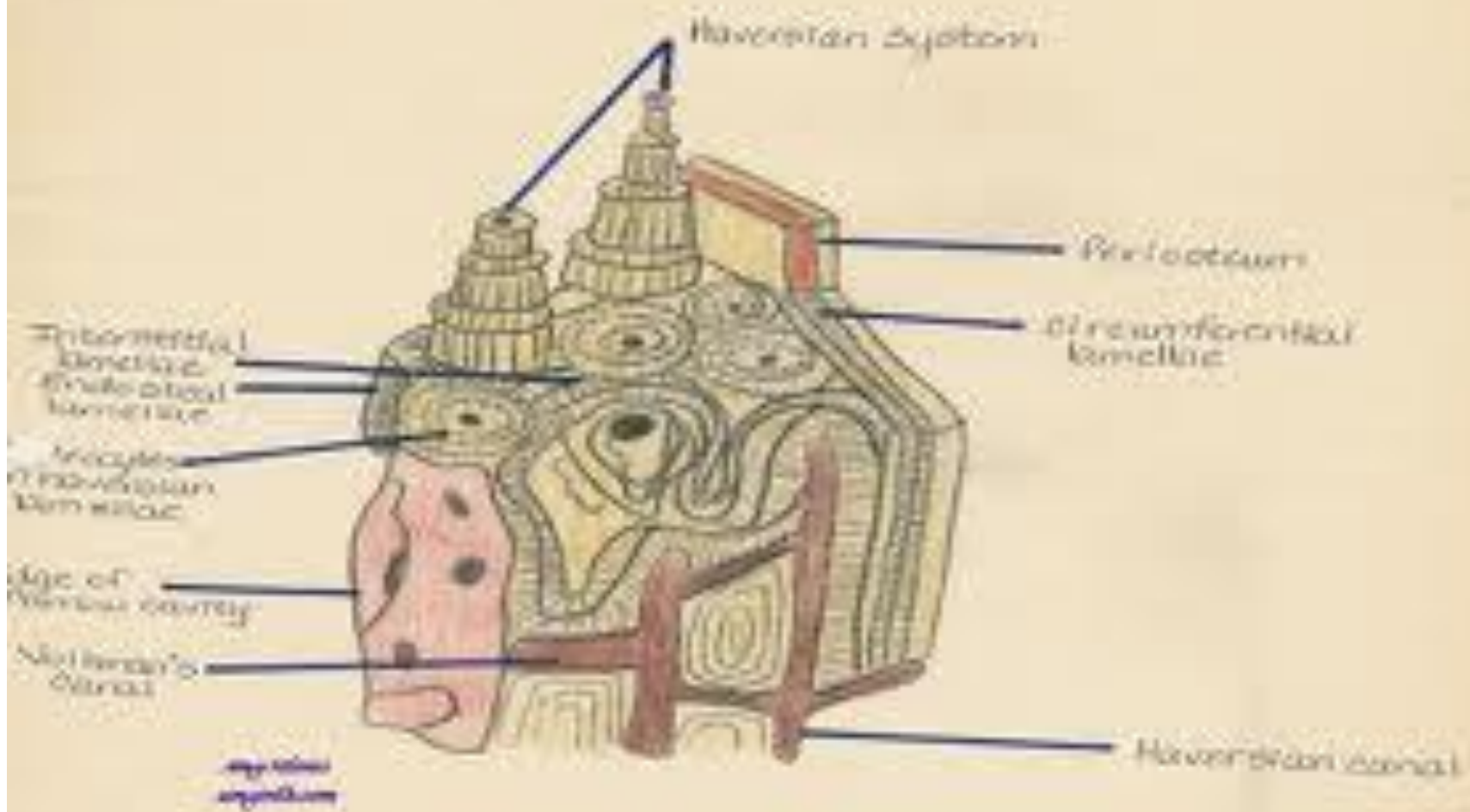
- THREE SYSTEMS
  - CIRCUMFERENTIAL SYSTEM
  - HAVERSIAN SYSTEM
  - INTERSTITIAL SYSTEM







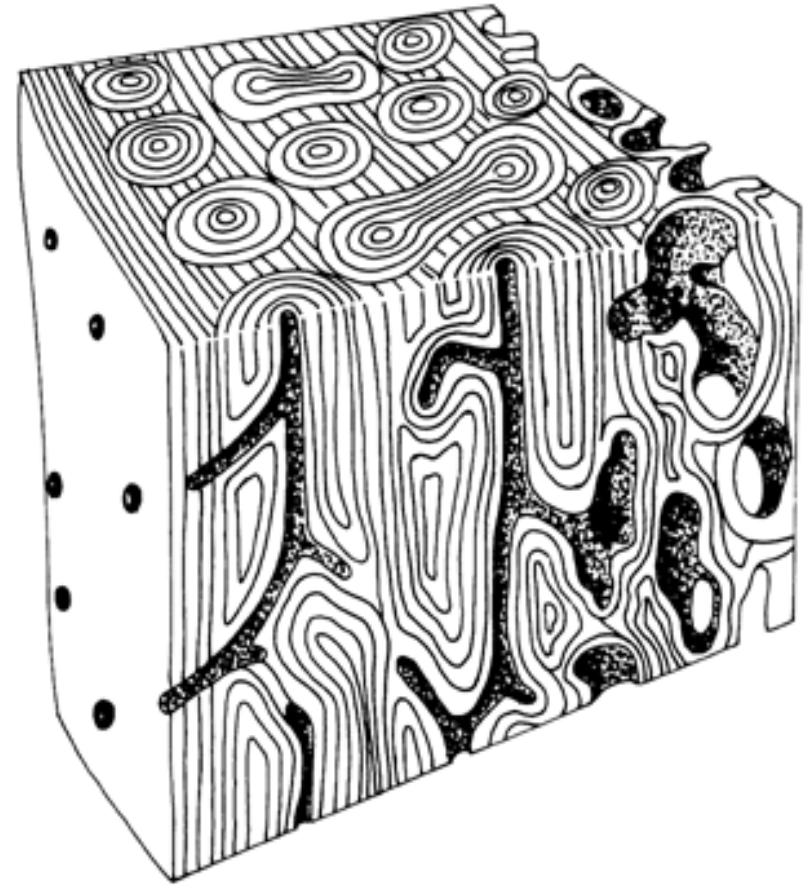
# Bone



# COMPACT BONE

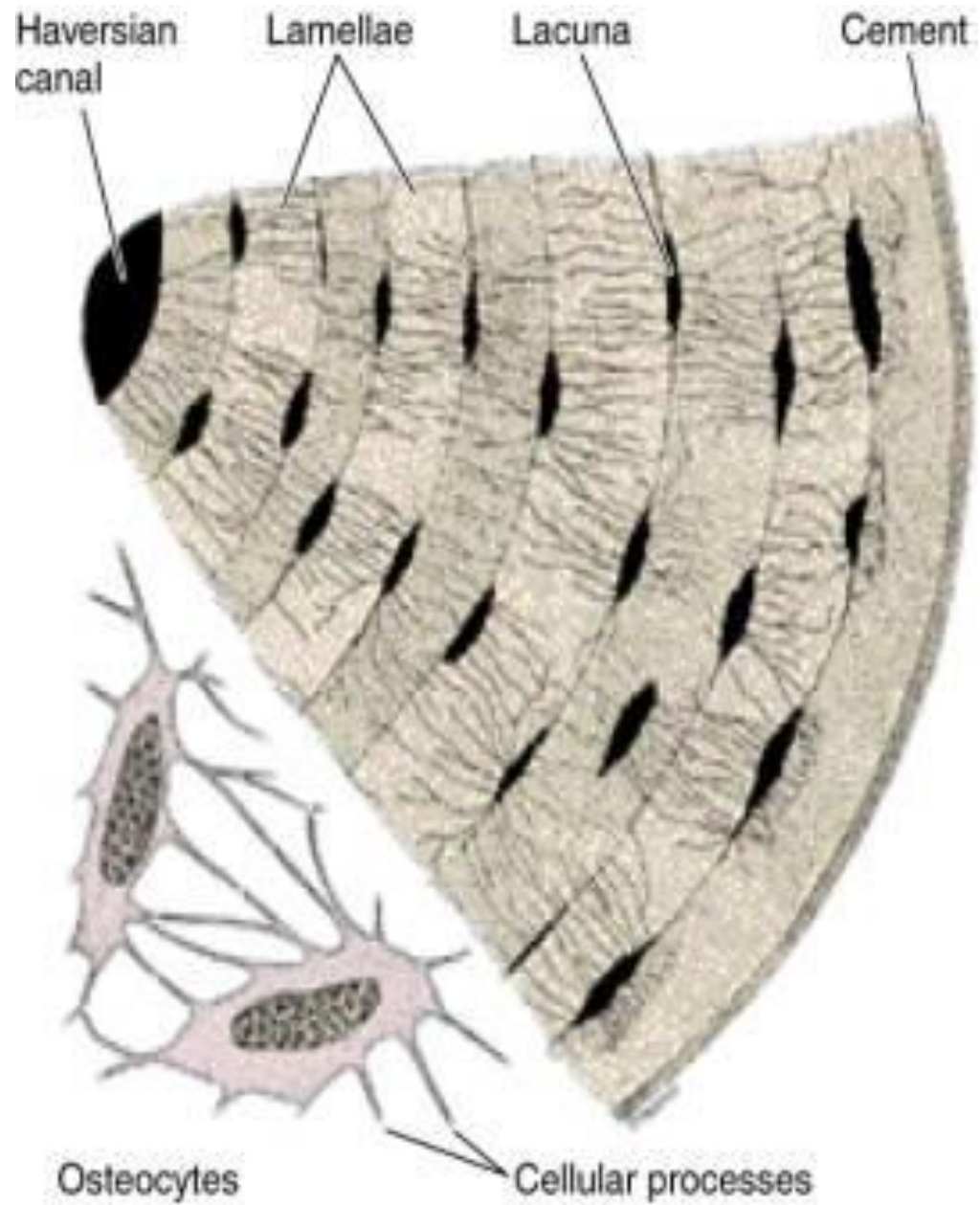


3

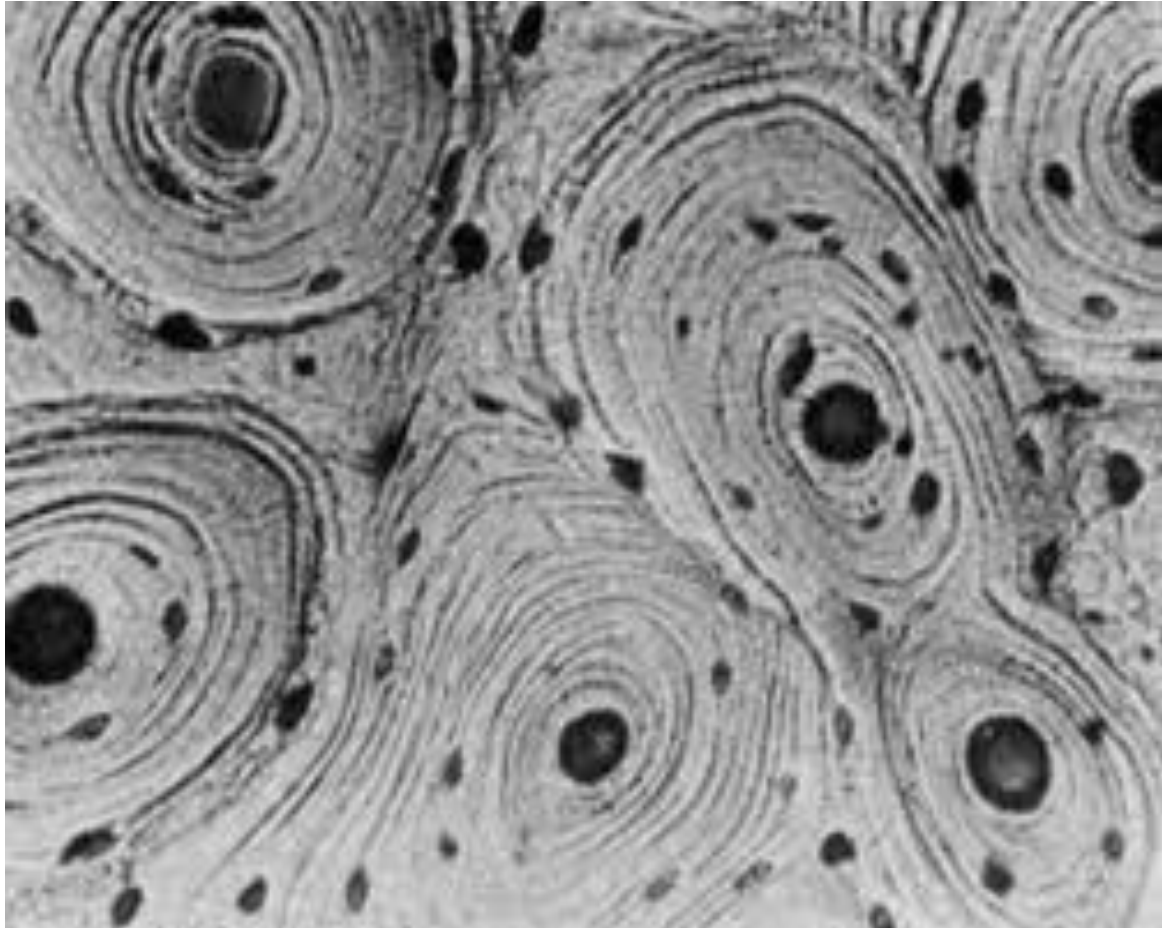


4

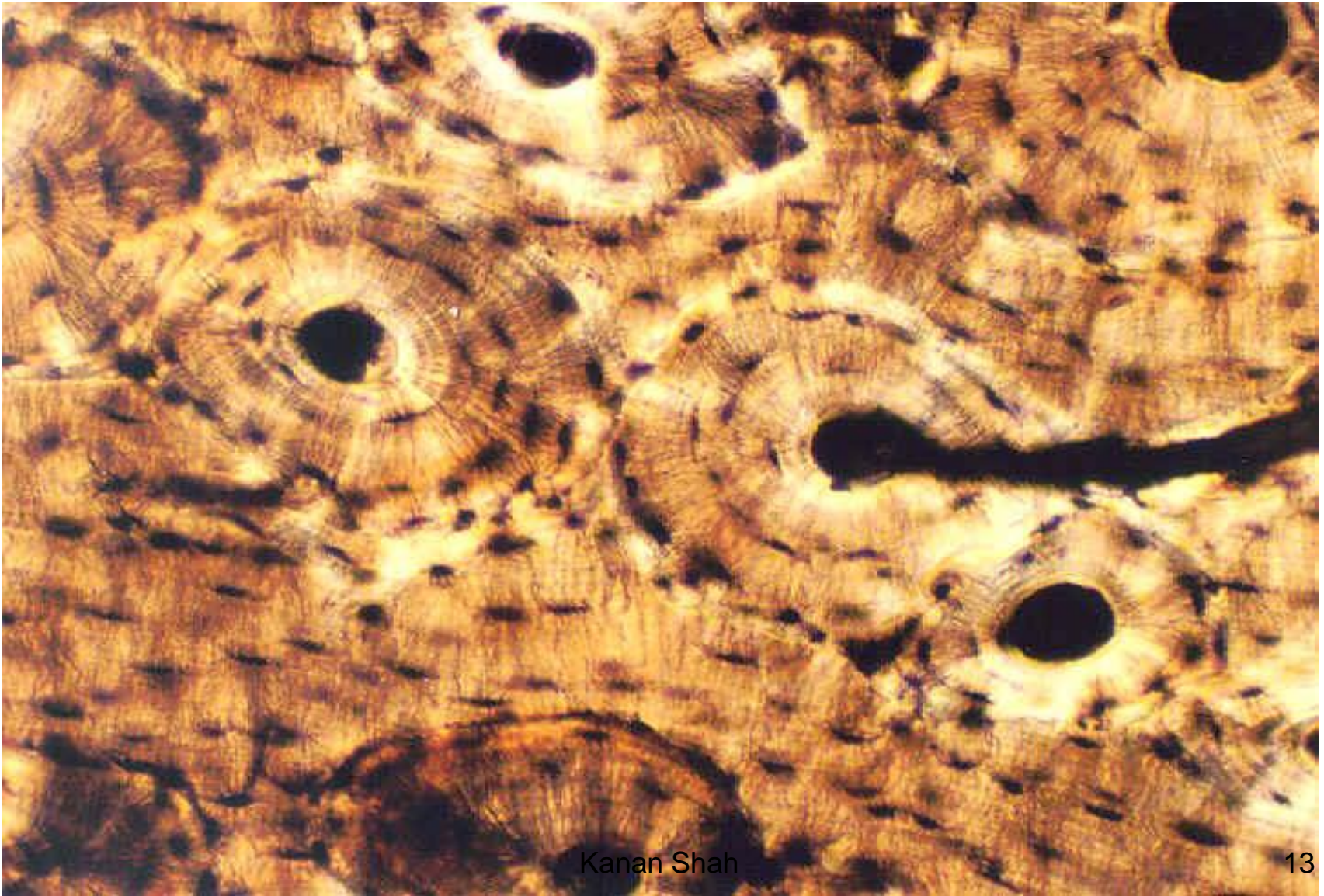
Kanan Shah



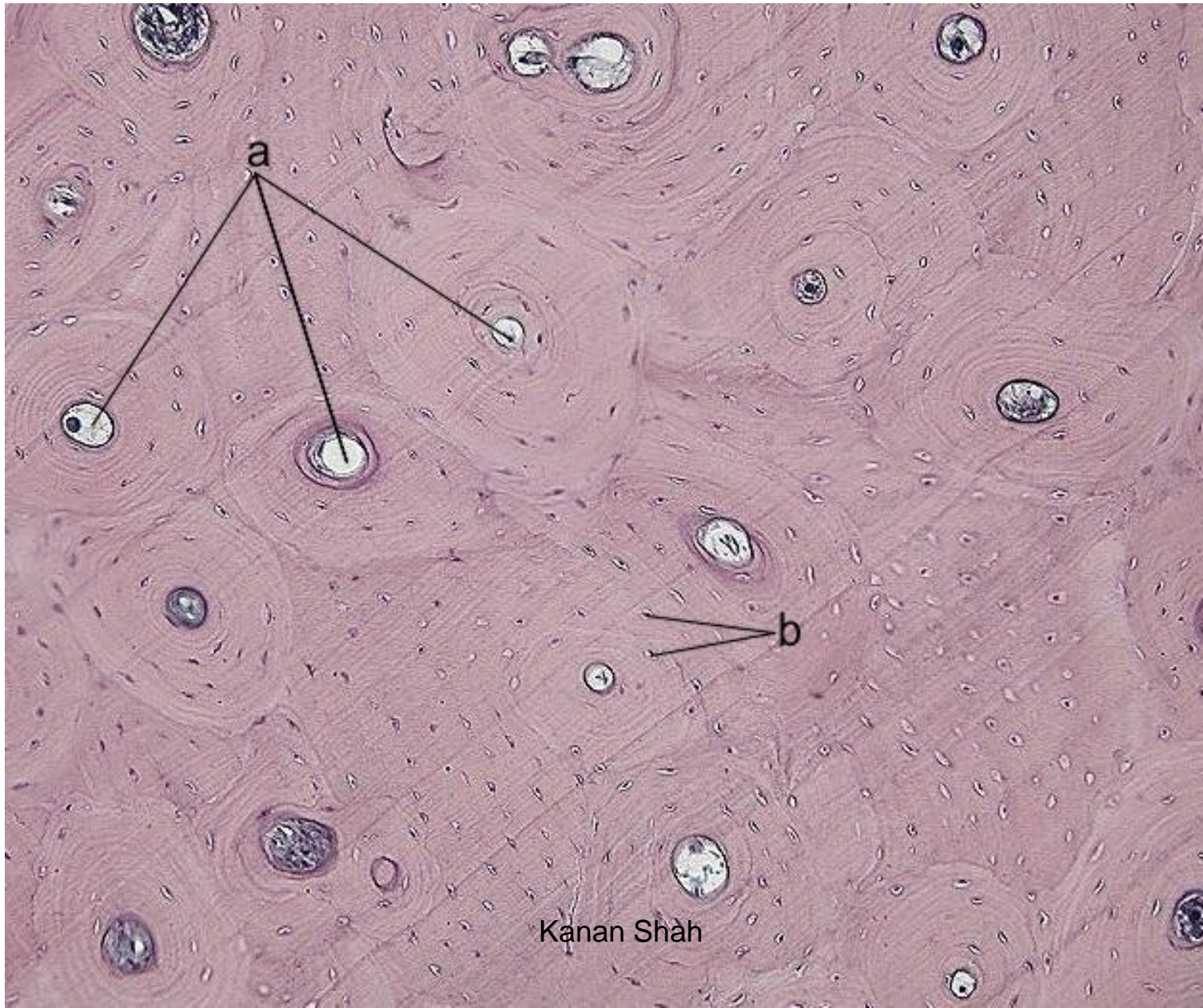
Kanan Shah



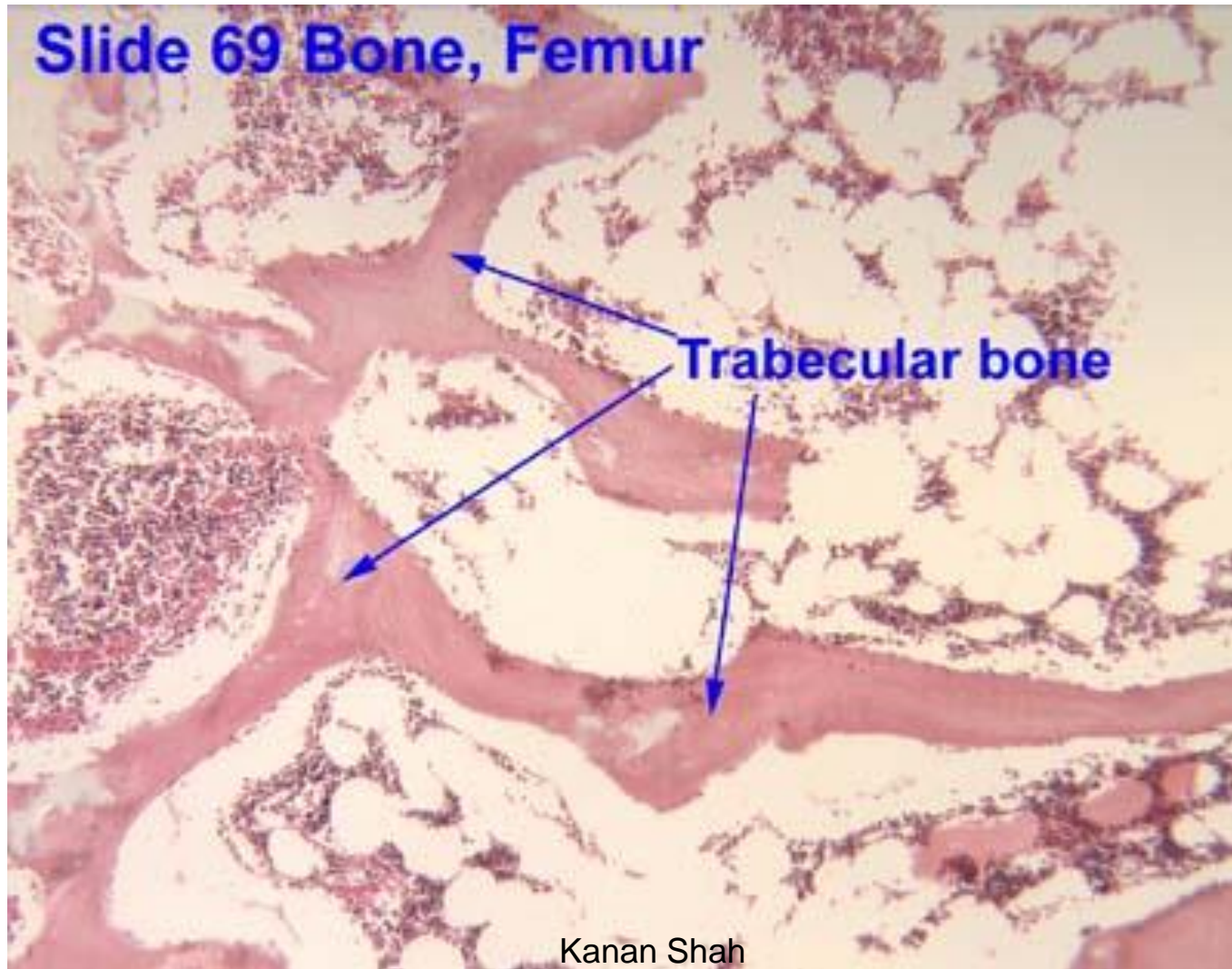
# COMPACT BONE --GROUND



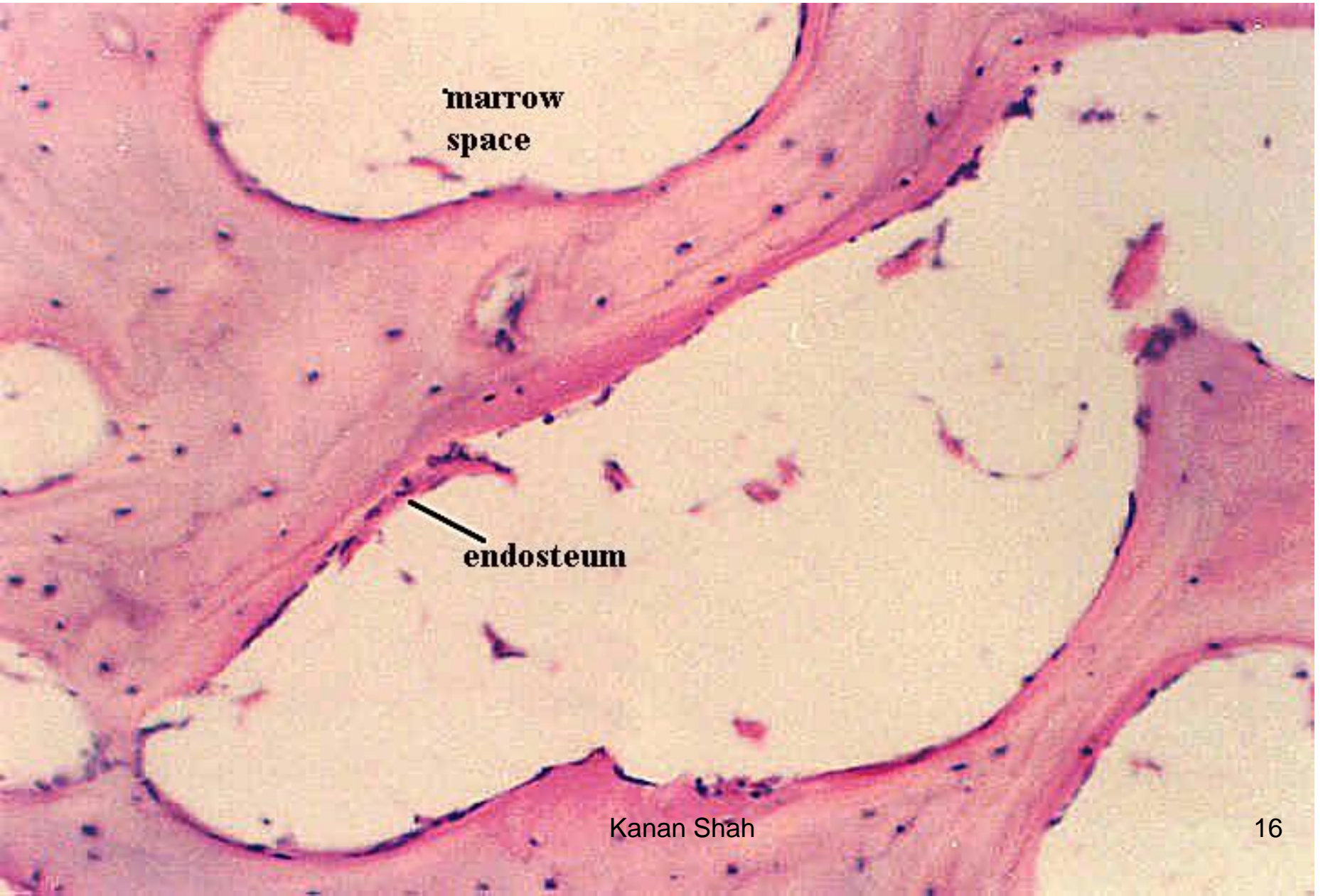
# COMPACT BONE --DECALCIFIED



# SPONGY BONE

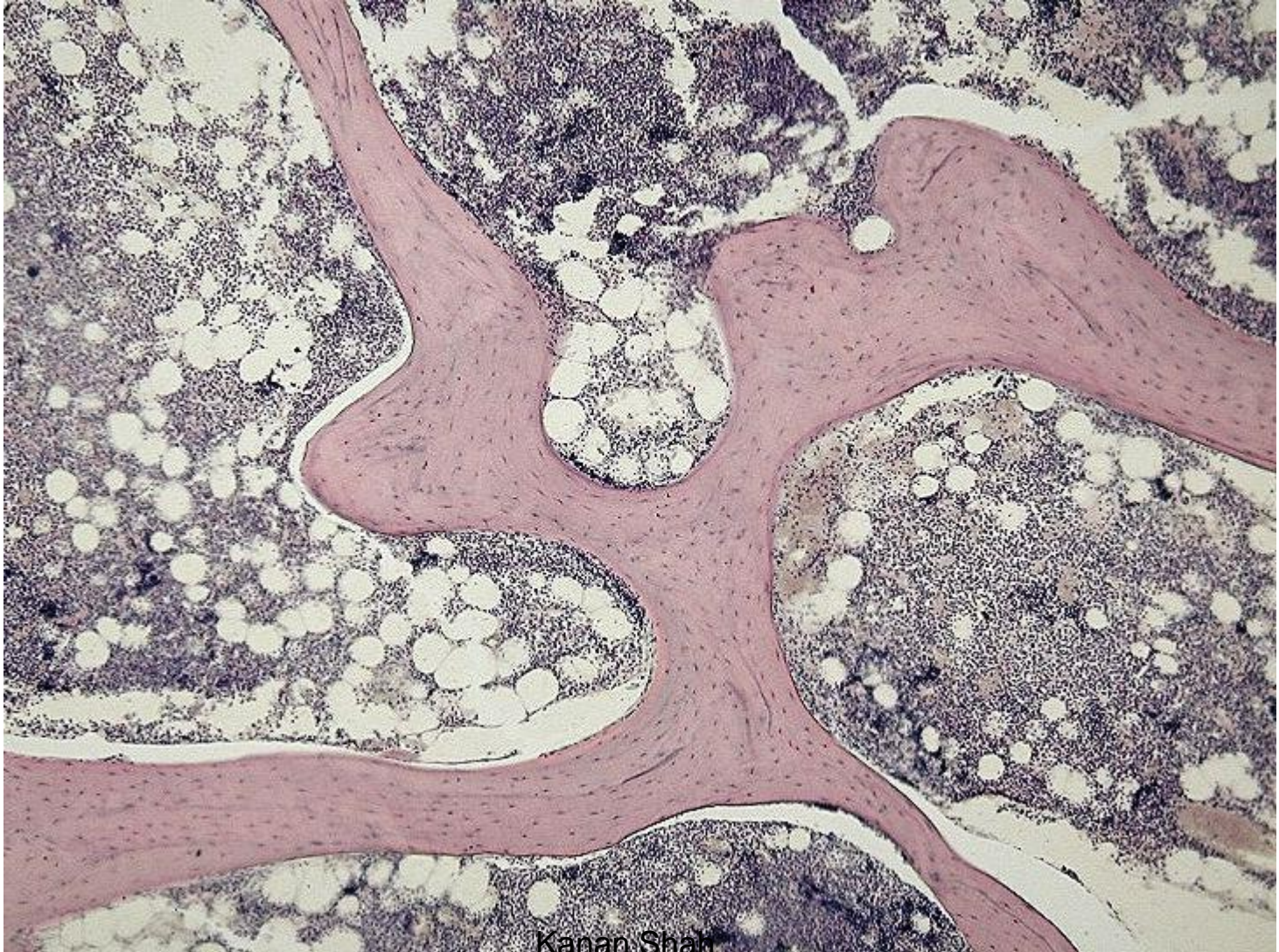


# SPONGY BONE



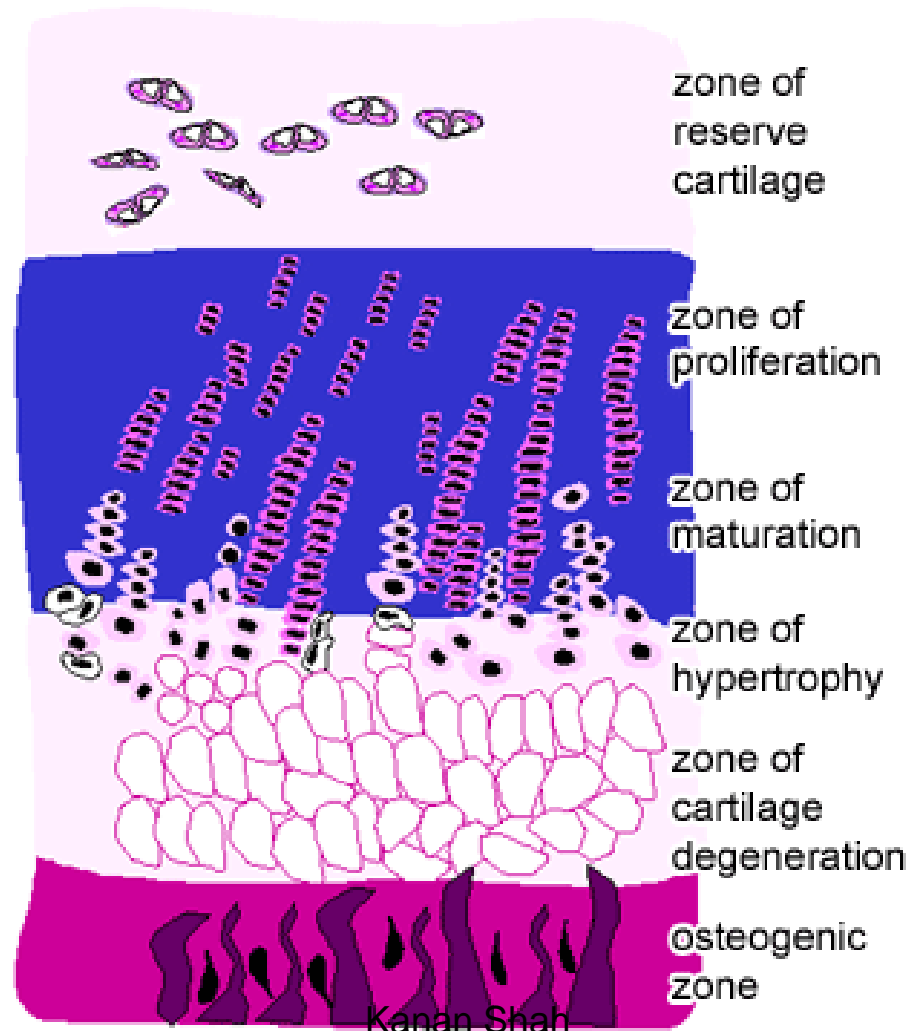


# SPONGY BONE

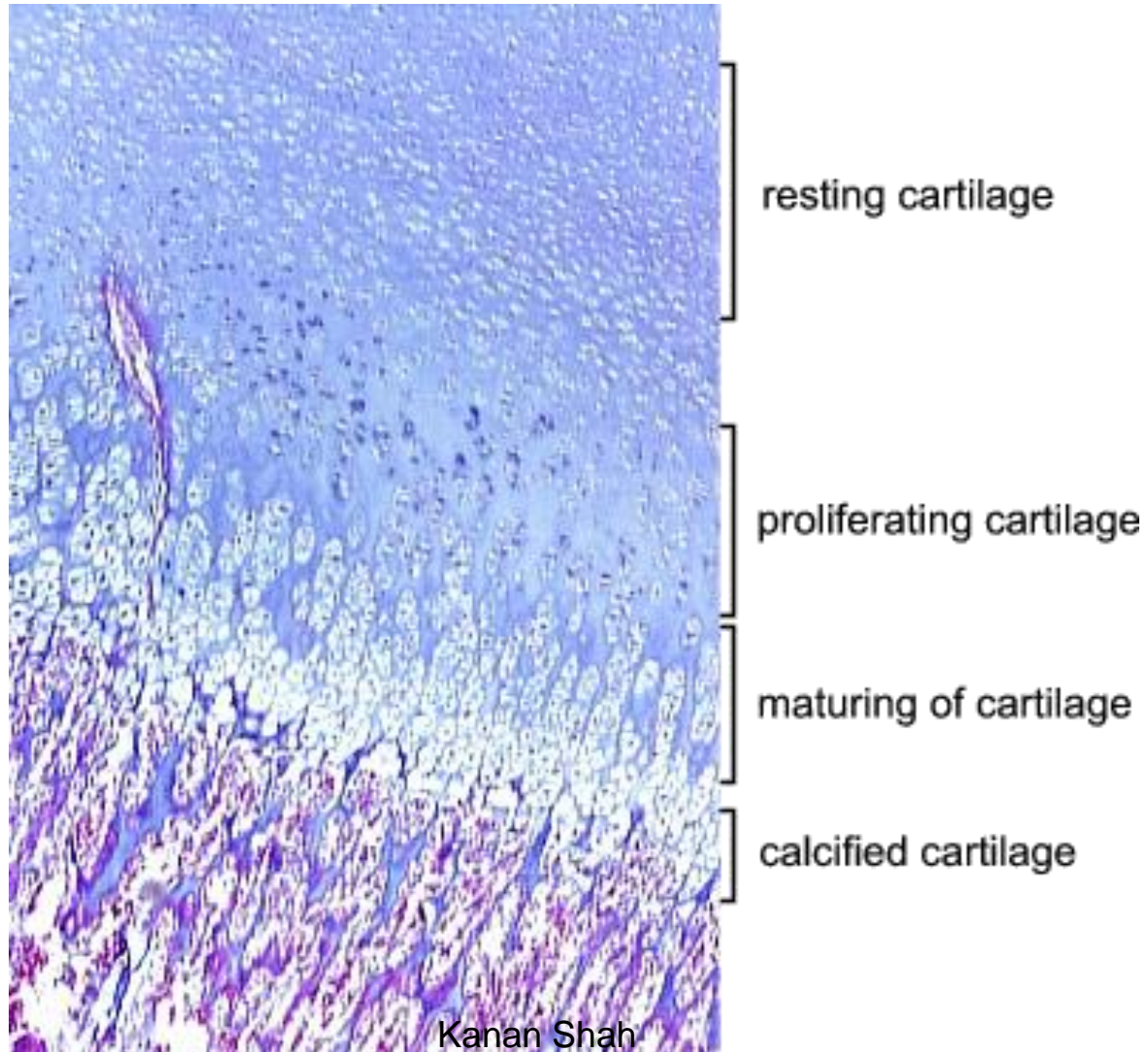


Kanan Shah

# DEVELOPING BONE



# DEVELOPING BONE



# Aknowledgement

- Inderbir Singh's Textbook of Human Histology
- Textbook of Histology- Atlas and Practical Guide by JP Gunasegaran
- Difiore's Atlas of Histology
- Images from Google
- Histology Text & Atlas -Brijeshkumar